

Sample Information

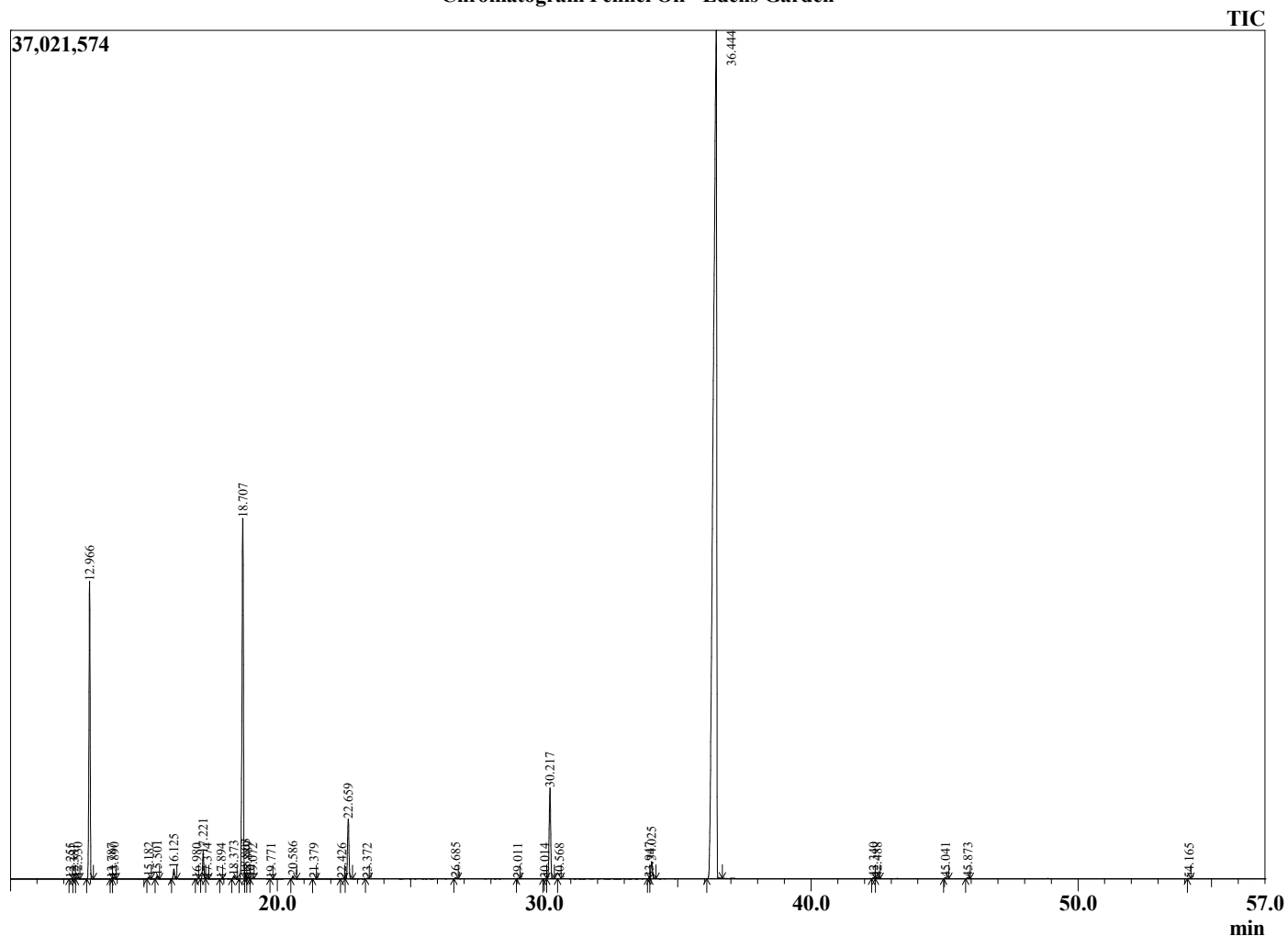
Analyzed by : Dr. Robert S. Pappas
 Analyzed : 7/20/2022 9:13:56 AM
 Sample Type : Essential Oil
 Sample Name : Fennel Oil - Edens Garden
 Sample ID : EG Lot #BB12GW
 Injection Volume : 0.10
 Instrument ID: : GC-3



Peak Report TIC

R.Time	Name	Area%
12.255	Hashishene	0.01
12.381	Tricyclene	0.00
12.530	alpha-Thujene	0.04
12.966	alpha-Pinene	8.50
13.787	alpha-Fenchene	0.01
13.890	Camphene	0.04
15.182	Sabinene	0.05
15.501	beta-Pinene	0.09
16.125	Myrcene	0.30
16.980	Octanal	0.01
17.221	alpha-Phellandrene	0.79
17.374	delta-Carene	0.02
17.894	alpha-Terpinene	0.01
18.373	para-Cymene	0.09
18.707	Limonene	12.67
18.803	beta-Phellandrene	0.13
18.889	1,8-Cineole	0.06
19.072	(Z)-beta-Ocimene	0.02
19.771	(E)-beta-Ocimene	0.00
20.586	gamma-Terpinene	0.09
21.379	trans-Sabinene hydrate	0.01
22.426	Terpinolene	0.02
22.659	Fenchone	2.10
23.372	Linalool	0.02
26.685	Camphor	0.03
29.011	Terpinen-4-ol	0.01
30.014	alpha-Terpineol	0.01
30.217	Estragole	3.34
30.568	alpha-Phellandrene epoxide	0.01
33.947	(Z)-Anethole	0.03
34.025	para-Anisaldehyde	0.67
36.444	(E)-Anethole	70.66
42.340	Unidentified	0.04
42.488	Anisyl methyl ketone	0.05
45.041	trans-beta-Caryophyllene	0.04
45.873	trans-alpha-Bergamotene	0.04
54.165	Unidentified	0.01
		100.00

Chromatogram Fennel Oil - Edens Garden



Comments:

The analysis of this Fennel Oil batch sample meets the expected chemical profile for authentic essential oil of *Foeniculum vulgare*.

No contamination or adulteration was detected. The results provided in this GCMS quality analysis reflect the chemical composition of the oil and lot referenced above on the date of analysis.