

Sample Information

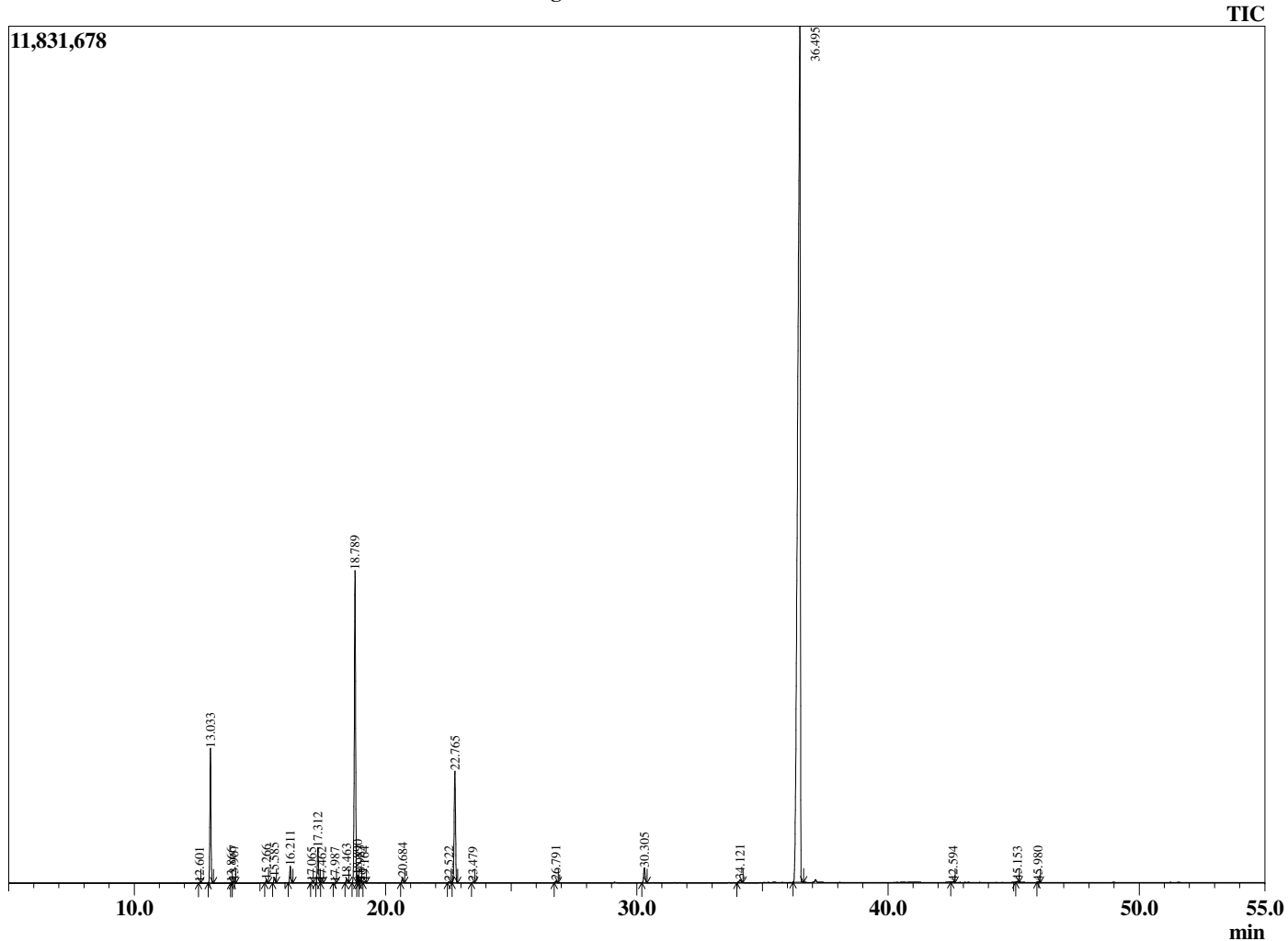
Analyzed by : Dr. Robert S. Pappas  
 Analyzed : 7/12/2020 12:00:51 PM  
 Sample Type : Essential Oil  
 Sample Name : Fennel - Edens Garden  
 Sample ID : BA18FT  
 Injection Volume : 0.10  
 Instrument ID : GC-3



Peak Report TIC

R.Time	Name	Area%
12.601	alpha-Thujene	0.02
13.033	alpha-Pinene	4.95
13.866	alpha-Fenchene	0.01
13.967	Camphene	0.09
15.266	Sabinene	0.13
15.585	beta-Pinene	0.21
16.211	Myrcene	0.66
17.065	Octanal	0.02
17.312	alpha-Phellandrene	1.43
17.462	delta-3-Carene	0.02
17.987	alpha-Terpinene	0.02
18.463	para-Cymene	0.18
18.789	Limonene	13.13
18.890	beta-Phellandrene	0.28
18.983	1,8-Cineole	0.09
19.164	trans-beta-Ocimene	0.06
20.684	gamma-Terpinene	0.23
22.522	Terpinolene	0.04
22.765	Fenchone	5.06
23.479	Linalool	0.02
26.791	Camphor	0.08
30.305	(Z)-Anisole	0.71
34.121	para-Anisaldehyde	0.19
36.495	(E)-Anethole	72.27
42.594	para-Acetonylanisole	0.05
45.153	beta-Caryophyllene	0.04
45.980	trans-alpha-Bergamotene	0.03
		100.00

Chromatogram Fennel - Edens Garden



Comments:

The analysis of this Fennel, Sweet batch sample meets the expected chemical profile for authentic essential oil of *Foeniculum vulgare*. No contamination or adulteration was detected. The results provided in this GCMS quality analysis reflect the chemical composition of the oil and lot referenced above on the date of analysis.