

Sample Information

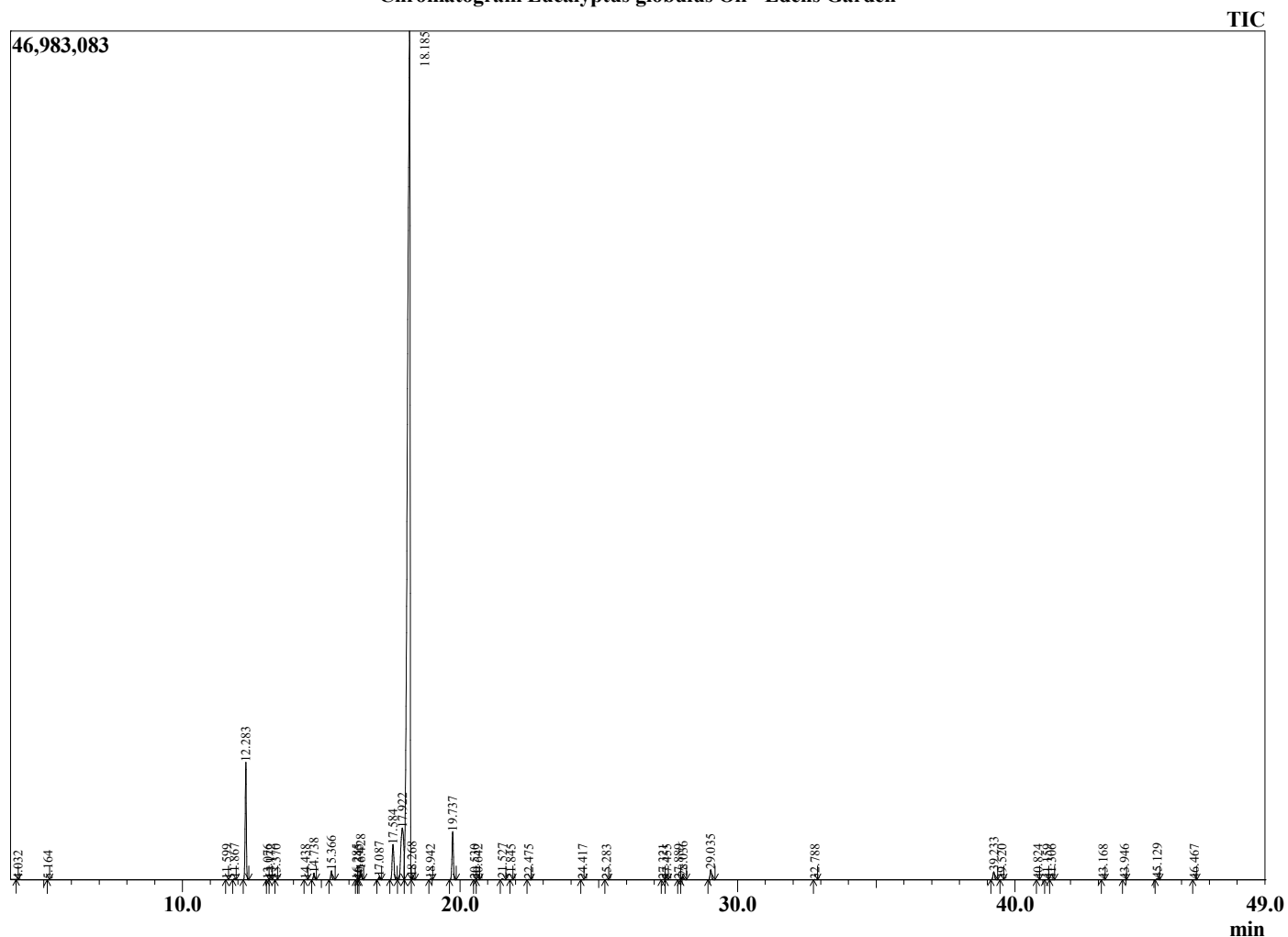
Analyzed by : Dr. Robert S. Pappas
 Analyzed : 7/20/2022 6:05:59 PM
 Sample Type : Essential Oil
 Sample Name : Eucalyptus globulus Oil - Edens Garden
 Sample ID : EG Lot #BB13GT
 Injection Volume : 0.10
 Instrument ID: : GC-4



Peak Report TIC

R.Time	Name	Area%
4.032	3-Methylbutanal	0.00
5.164	1-Pentanol	0.01
11.599	Hashishene	0.01
11.867	alpha-Thujene	0.03
12.283	alpha-Pinene	5.16
13.076	alph-Fenchene	0.01
13.172	Camphene	0.02
13.370	Thuja-2,4(10)-diene	0.00
14.438	Sabinene	0.02
14.738	beta-Pinene	0.32
15.366	Myrcene	0.45
16.285	Pseudolimonene	0.01
16.345	Unidentified	0.02
16.428	alpha-Phellandrene	0.50
17.087	alpha-Terpinene	0.15
17.584	para-Cymene	2.30
17.922	Limonene	5.47
18.185	1,8-Cineole	81.29
18.268	(Z)-beta-Ocimene	0.13
18.942	(E)-beta-Ocimene	0.04
19.737	gamma-Terpinene	2.52
20.530	cis-Linalool oxide (furanoid)	0.01
20.642	Pinol	0.01
21.527	Terpinolene	0.06
21.845	para-Cymenene	0.01
22.475	Linalool	0.02
24.417	Unidentified	0.00
25.283	trans-Pinocarveol	0.03
27.321	delta-Terpineol	0.02
27.455	Borneol	0.01
27.889	Unidentified	0.01
28.036	Terpinen-4-ol	0.18
29.035	alpha-Terpineol	0.58
32.788	Geraniol	0.01
39.233	alpha-Terpinyl acetate	0.50
39.520	Eugenol	0.01
40.824	Isoledene	0.00
41.159	alph-Copaene	0.00
41.306	Geranyl acetate	0.00
43.168	alpha-Gurjunene	0.02
43.946	trans-beta-Caryophyllene	0.00
45.129	Aromadendrene	0.06
46.467	Alloaromadendrene	0.01
		100.00

Chromatogram Eucalyptus globulus Oil - Edens Garden



Comments:

The analysis of this Eucalyptus globulus Oil batch sample meets the expected chemical profile for authentic essential oil of Eucalyptus globulus.

No contamination or adulteration was detected. The results provided in this GCMS quality analysis reflect the chemical composition of the oil and lot referenced above on the date of analysis.