

Sample Information

Analyzed by : Dr. Robert S. Pappas
 Analyzed : 7/20/2022 9:43:49 PM
 Sample Type : Essential Oil
 Sample Name : Eucalyptus Radiata Oil - Edens Garden
 Sample ID : EG Lot #BB12GU
 Injection Volume : 0.10
 Instrument ID: GC-

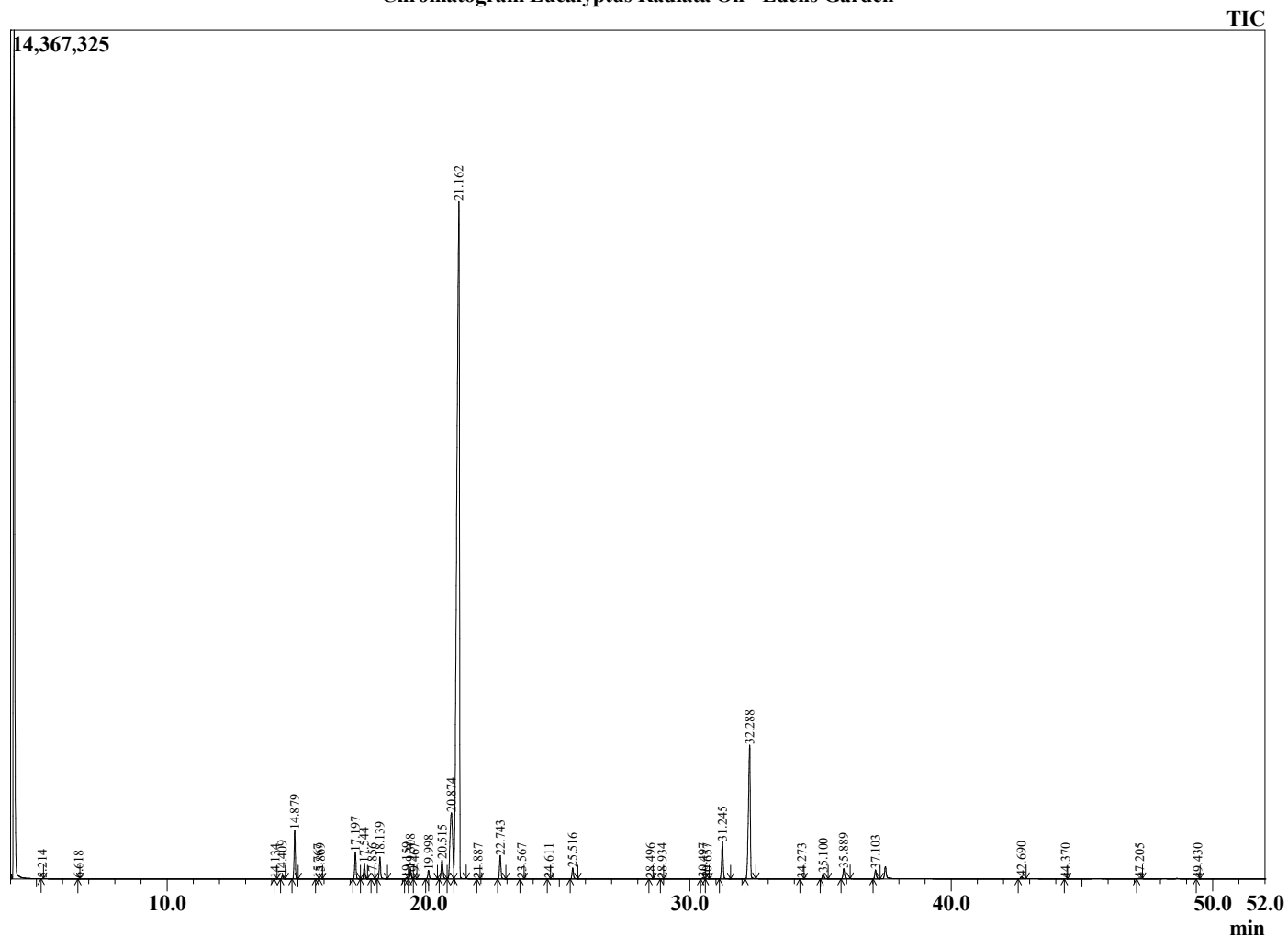


Peak Report TIC

R.Time	Name	Area%
5.214	3-Methylbutanal	0.00
6.618	Isoamyl alcohol	0.00
14.134	Hashishene	0.00
14.409	alpha-Thujene	0.17
14.879	alpha-Pinene	2.27
15.767	alpha-Fenchene	0.01
15.869	Camphene	0.01
17.197	Sabinene	1.36
17.544	beta-Pinene	0.80
17.856	Unidentified	0.01
18.139	Myrcene	1.16
19.159	Pseudolimonene	0.06
19.308	alpha-Phellandrene	0.53
19.467	delta-3-Carene	0.02
19.998	alpha-Terpinene	0.49
20.515	para-Cymene	1.30
20.874	Limonene	6.77
21.162	1,8-Cineole	69.25
21.887	trans-beta-Ocimene	0.01
22.743	gamma-Terpinene	1.28
23.567	cis-Linalool oxide (furanoid)	0.02
24.611	Terpinolene	0.02
25.516	Linalool	0.62
28.496	trans-Pinocarveol	0.01
28.934	Camphor	0.01
30.497	delta-Terpineol	0.06
30.657	Borneol	0.01
31.245	Terpinen-4-ol	2.23
32.288	alpha-Terpineol	9.73
34.273	Citronellol	0.02
35.100	Neral	0.36
35.889	Geraniol	0.64
37.103	Geranial	0.56
42.690	Eugenol	0.16
44.370	alpha-Copaene	0.01
47.205	beta-Caryophyllene	0.05
49.430	alpha-Humulene	0.01
		100.00

2

Chromatogram Eucalyptus Radiata Oil - Edens Garden



Comments:

The analysis of this Eucalyptus Radiata Oil batch sample meets the expected chemical profile for authentic essential oil of Eucalyptus radiata.

No contamination or adulteration was detected. The results provided in this GCMS quality analysis reflect the chemical composition of the oil and lot referenced above on the date of analysis.