

Sample Information

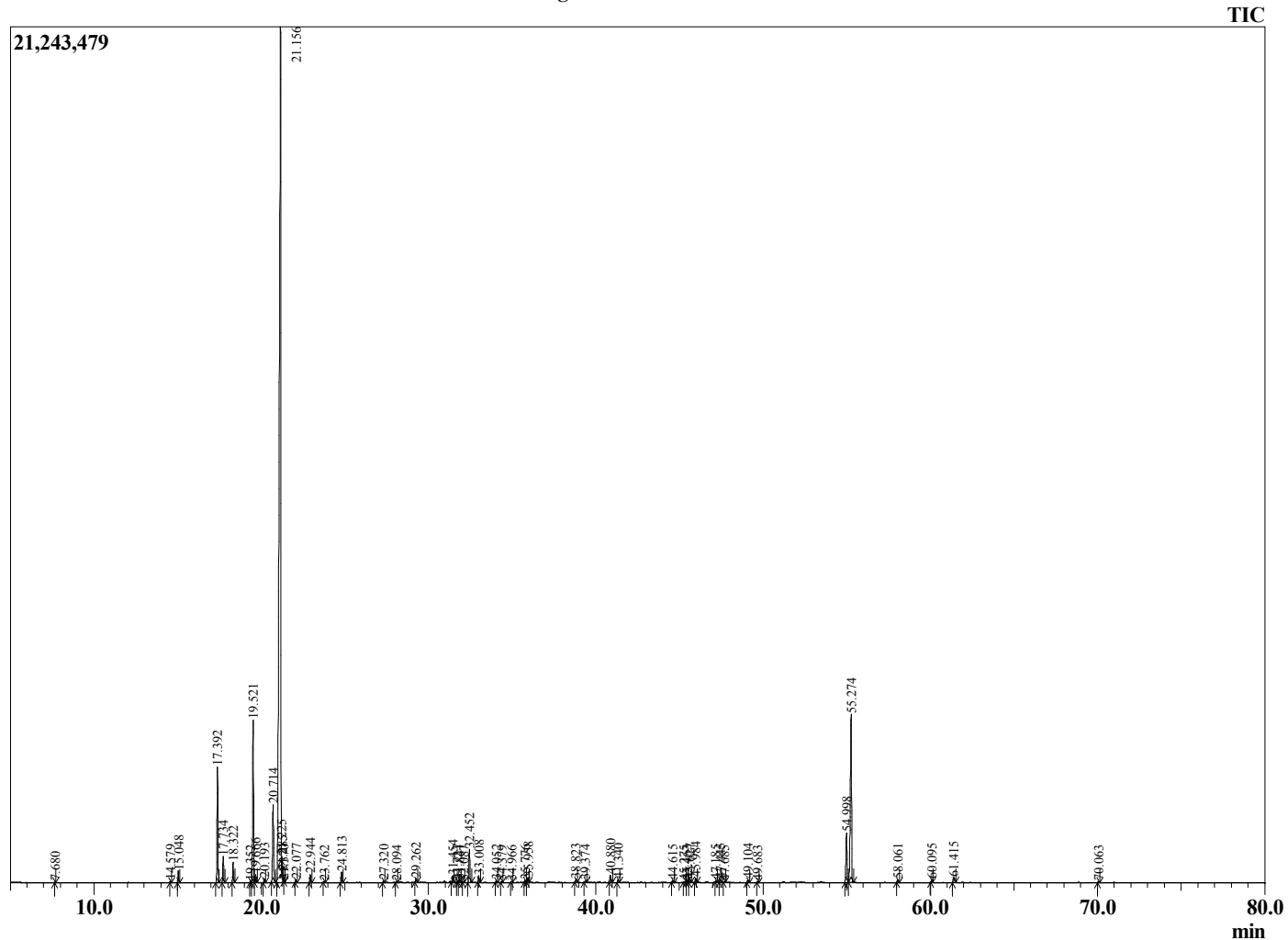
Analyzed by : Dr. Robert S. Pappas  
 Analyzed : 7/13/2020 3:20:13 PM  
 Sample Type : Essential Oil  
 Sample Name : Elemi - Edens Garden  
 Sample ID : BA18FQ  
 Injection Volume : 0.10  
 Instrument ID : GC-2



Peak Report TIC

R.Time	Name	Area%
7.680	Toluene	0.02
14.579	alpha-Thujene	0.06
15.048	alpha-Pinene	0.41
17.392	Sabinene	4.42
17.734	beta-Pinene	0.98
18.322	Myrcene	0.80
19.352	Pseudolimonene	0.03
19.521	alpha-Phellandrene	6.67
19.666	3-Carene	0.32
20.193	alpha-Terpinene	0.16
20.714	para-Cymene	3.85
21.156	Limonene	63.81
21.225	beta-Phellandrene	0.12
21.285	1,8-Cineole	0.08
21.370	(Z)-beta-Ocimene	0.01
22.077	(E)-beta-Ocimene	0.10
22.944	gamma-Terpinene	0.32
23.762	trans-Sabinene hydrate	0.04
24.813	Terpinolene	0.44
27.320	trans-p-Mentha-2,8-dienol	0.05
28.094	cis-Limonene oxide	0.05
29.262	Unidentified	0.17
31.454	Terpinen-4-ol	0.27
31.727	Unidentified	0.06
31.841	para-Cymen-8-ol	0.10
32.087	Unidentified	0.03
32.452	alpha-Terpineol	1.53
33.008	alpha-Phellandrene epoxide	0.30
34.052	trans-Carveol	0.07
34.379	Unidentified	0.04
34.966	cis-Carveol	0.05
35.776	Carvone	0.07
35.958	Unidentified	0.23
38.823	Unidentified	0.13
39.374	Unidentified	0.06
40.880	Unidentified	0.32
41.340	Unidentified	0.13
44.615	alpha-Copaene	0.08
45.275	Unidentified	0.02
45.463	beta-Elemene	0.06
45.627	Unidentified	0.14
45.984	Methyleugenol	0.17
47.185	Unidentified	0.06
47.445	trans-beta-Caryophyllene	0.14
47.685	Unidentified	0.03
49.104	Unidentified	0.12
49.683	alpha-Humulene	0.05
54.998	Elemicin	2.40
55.274	Elemol	9.80
58.061	Guaiol	0.11
60.095	gamma-Eudesmol	0.14
61.415	alpha-Eudesmol	0.34
70.063	Unidentified	0.04
		100.00

Chromatogram Elemi - Edens Garden



Comments:

The analysis of this Elemi batch sample meets the expected chemical profile for authentic essential oil of *Canarium luzonicum*. No contamination or adulteration was detected. The results provided in this GCMS quality analysis reflect the chemical composition of the oil and lot referenced above on the date of analysis.