

Sample Information

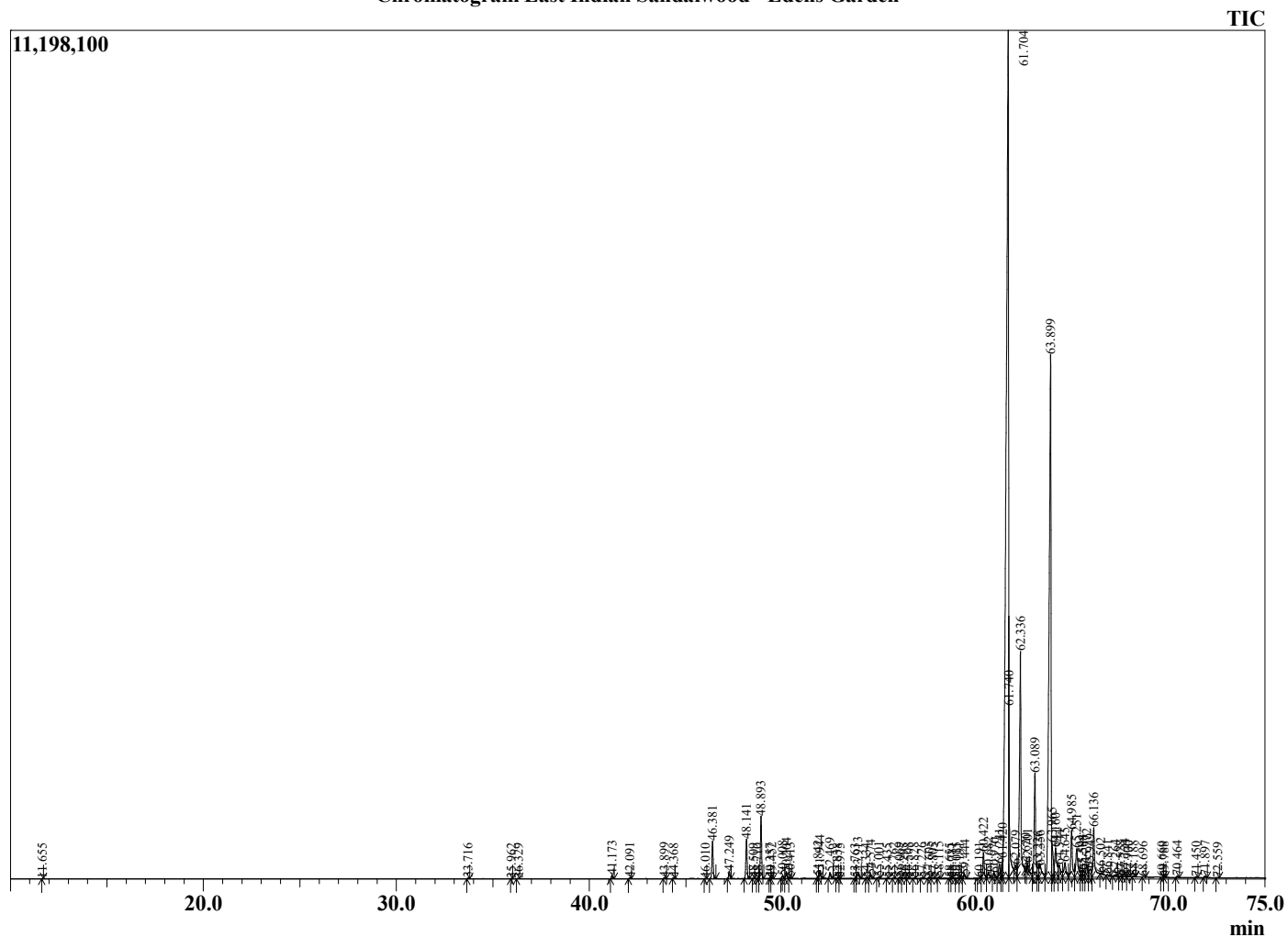
Analyzed by : Dr. Robert S. Pappas
 Analyzed : 7/29/2022 12:42:41 AM
 Sample Type : Essential Oil
 Sample Name : East Indian Sandalwood - Edens Garden
 Sample ID : EG Lot #BB12GAY
 Injection Volume : 0.10
 Instrument ID: : GC-2



Peak Report TIC

R.Time	Name	Area%
11.655	Santene	0.00
33.716	Unidentified	0.02
35.962	Unidentified	0.00
36.329	Teresantalic acid	0.01
41.173	nortricyclo-eka-Santalic acid	0.08
42.091	Unidentified	0.02
43.899	Unidentified	0.03
44.368	Sesquithujene isomer	0.01
46.010	cis-alpha-Bergamotene	0.00
46.381	alpha-Santalene	0.99
47.249	trans-alpha-Bergamotene	0.19
48.141	epi-beta-Santalene	1.04
48.509	Sesquisabinene	0.01
48.710	Unidentified	0.01
48.893	beta-Santalene	1.62
49.357	alpha-Acoradiene	0.01
49.452	beta-Acoradiene	0.02
50.008	gamma-Curcumene	0.07
50.204	Ar-Curcumene	0.16
50.413	trans-beta-Bergamotene	0.03
51.842	beta-Bisabolene	0.06
51.944	beta-Curcumene	0.23
52.469	Unidentified	0.17
52.838	Unidentified	0.01
52.975	(E)-gamma-Bisaobolene	0.00
53.763	(E)-alpha-Bisabolene	0.01
53.913	Unidentified	0.22
54.334	Unidentified	0.01
54.574	Unidentified	0.09
55.001	Unidentified	0.04
55.435	Dendrolasin	0.01
55.762	Unidentified	0.01
56.069	Sesquisabinene hydrate isomer	0.04
56.295	Unidentified	0.01
56.508	Unidentified	0.01
56.828	Unidentified	0.01
57.226	Unidentified	0.02
57.605	Unidentified	0.04
57.805	Unidentified	0.02
58.115	Unidentified	0.04
58.655	Unidentified	0.01
58.781	Unidentified	0.01
59.015	Unidentified	0.02
59.191	Unidentified	0.02
59.444	Unidentified	0.11
60.191	Unidentified	0.02
60.422	Khusilal	0.74
60.682	(E)-alpha-Santalal	0.20
60.970	Unidentified	0.14
61.241	Unidentified	0.44
61.420	beta-Bisabolol	0.37
61.704	(Z)-alpha-Santalol	44.02
61.740	(Z)-alpha-Santalal	3.03
62.079	Unidentified	0.11
62.336	(Z)-alpha-trans-Bergamotol	8.69
62.620	Unidentified	0.02
62.701	(E)-alpha-Santalol	0.19
63.089	(Z)-epi-beta-Santalol	3.18
63.226	Unidentified	0.34
63.356	(E)-alpha-trans-Bergamotol	0.77
63.899	(Z)-beta-Santalol	21.00
63.965	Unidentified	0.96

Chromatogram East Indian Sandalwood - Edens Garden



Comments:

The analysis of this East Indian Sandalwood batch sample meets the expected chemical profile for authentic essential oil of Santalum album .

No contamination or adulteration was detected. The results provided in this GCMS quality analysis reflect the chemical composition of the oil and lot referenced above on the date of analysis.

©Copyright 2022 by Essential Oil University. All rights reserved. Any publishing, copying, use, dissemination, or distribution of this report, including online, without the express written permission of Essential Oil University is strictly prohibited.

R.Time	Name	Area%
64.160	(Z)-Nuciferol	1.31
64.344	(E)-epi-beta-Santalol	0.67
64.645	Unidentified	0.79
64.985	(E)-beta-Santalol	1.67
65.251	Unidentified	1.38
65.504	Unidentified	0.25
65.588	Unidentified	0.26
65.772	(E)-Nuciferol	0.51
65.949	Unidentified	0.40
66.136	cis-Lanceol	2.62
66.502	Unidentified	0.02
66.841	Unidentified	0.03
67.264	Unidentified	0.06
67.528	Unidentified	0.01
67.724	Lanceol analogue	0.09
67.900	Unidentified	0.03
68.188	Unidentified	0.02
68.696	Unidentified	0.01
69.660	Unidentified	0.01
69.788	Unidentified	0.01
70.464	Unidentified	0.04
71.450	Unidentified	0.03
71.897	Unidentified	0.05
72.559	Unidentified	0.01
		100.00