

Sample Information

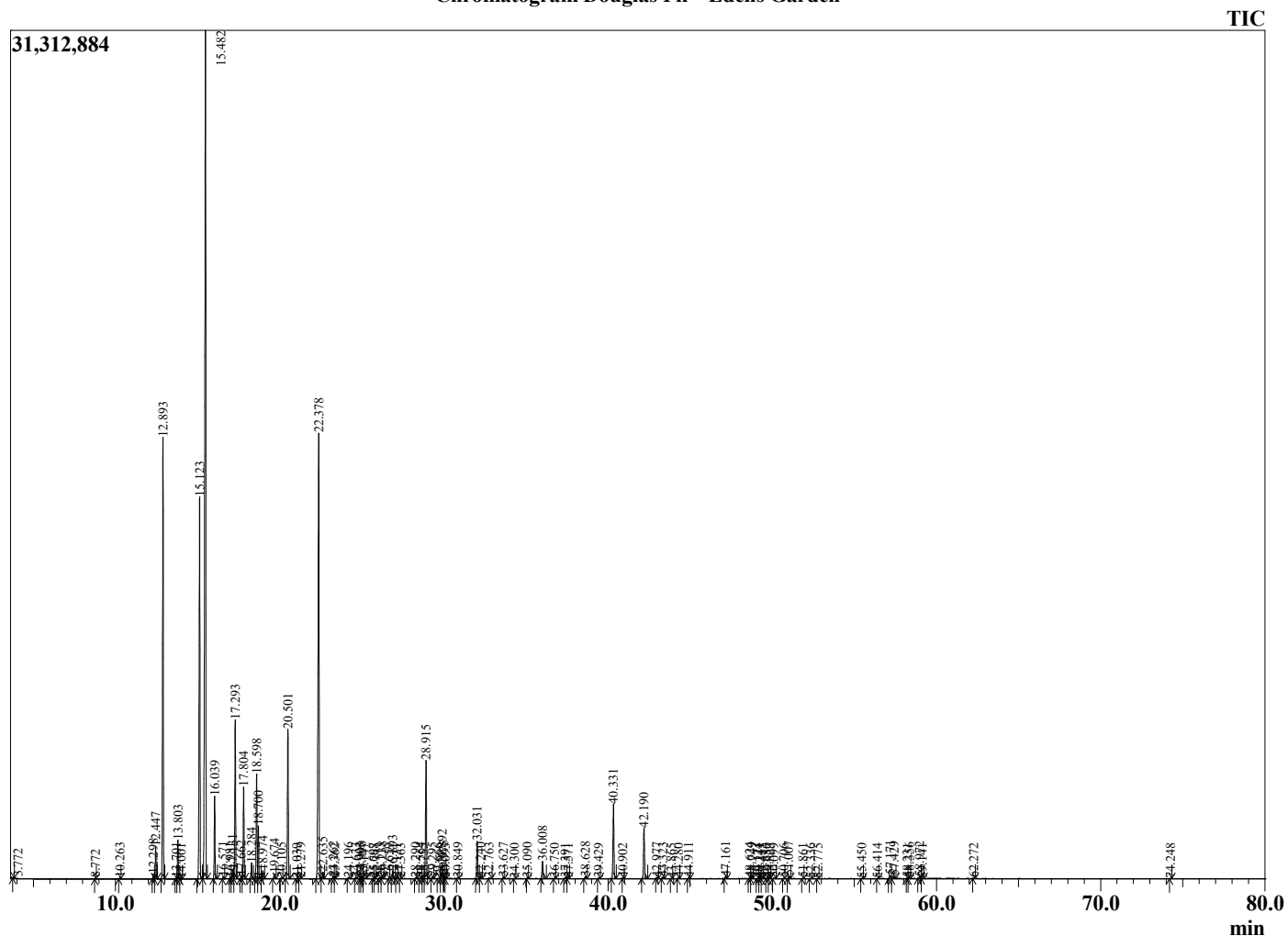
Analyzed by : Dr. Robert S. Pappas
 Analyzed : 7/27/2022 1:32:02 PM
 Sample Type : Essential Oil
 Sample Name : Douglas Fir - Edens Garden
 Sample ID : EG Lot # BB18JK
 Injection Volume : 0.10
 Instrument ID : GC-3



Peak Report TIC

R.Time	Name	Area%
3.772	Unidentified	0.01
8.772	Ethyl 2-methylbutyrate	0.01
10.263	Santene	0.02
12.298	Tricyclene	0.10
12.447	alpha-Thujene	0.75
12.893	alpha-Pinene	11.16
13.701	alpha-Fenchene	0.03
13.803	Camphene	0.96
14.001	Thuja-2,4(10)-diene	0.01
15.123	Sabinene	11.06
15.482	beta-Pinene	30.10
16.039	Myrcene	2.07
16.571	Ethyl hexanoate	0.05
16.981	Pseudolimonene	0.03
17.131	alpha-Phellandrene	0.26
17.293	delta-3-Carene	4.26
17.662	1,4-Cineole	0.08
17.804	alpha-Terpineol	2.39
18.284	para-Cymene	0.44
18.598	Limonene	2.85
18.700	beta-Phellandrene	1.36
18.974	cis-beta-Ocimene	0.22
19.674	trans-beta-Ocimene	0.15
20.105	Unidentified	0.03
20.501	gamma-Terpinene	4.32
21.039	Unidentified	0.01
21.279	trans-Sabinene hydrate	0.03
22.378	Terpinolene	14.84
22.635	para-Cymenene	0.18
23.262	Linalool	0.07
23.362	cis-Sabinene hydrate	0.01
24.196	1,3,8-para-Menthatriene	0.04
24.633	alpha-Fenchol	0.04
24.903	Methyl octanoate	0.05
24.990	cis-para-Menth-2-en-1-ol	0.07
25.147	alpha-Campholenal	0.02
25.697	Unidentified	0.02
25.768	Terpin-3-en-1-ol	0.02
26.113	trans-Pinocarveol	0.04
26.238	Unidentified	0.08
26.659	Isopulegol	0.02
26.893	Citronellal	0.24
27.131	Camphene hydrate	0.02
27.363	Isopulegol	0.01
28.290	Borneol	0.03
28.564	Unidentified	0.03
28.755	Unidentified	0.02
28.915	Terpinen-4-ol	3.74
29.295	para-Cymen-8-ol	0.04
29.666	Unidentified	0.01
29.892	alpha-Terpineol	0.48
29.975	Ethyl octanoate	0.08
30.093	Estragole	0.02
30.849	trans-Piperitol	0.03
32.031	Citronellol	1.12
32.240	Thymol methyl ether	0.04
32.763	Unidentified	0.03
33.627	Unidentified	0.05
34.300	Unidentified	0.01
35.090	Isopulegyl acetate	0.02
36.008	Bornyl acetate	0.59
36.750	trans-Pinocarvyl acetate	0.01

Chromatogram Douglas Fir - Edens Garden



Comments:

The analysis of this Douglas fir batch sample meets the expected chemical profile for authentic essential oil of *Pseudotsuga menziesii*.

No contamination or adulteration was detected. The results provided in this GCMS quality analysis reflect the chemical composition of the oil and lot referenced above on the date of analysis.

©Copyright 2022 by Essential Oil University. All rights reserved. Any publishing, copying, use, dissemination, or distribution of this report, including online, without the express written permission of Essential Oil University is strictly prohibited.

R.Time	Name	Area%
37.391	Citronellic acid	0.03
37.571	4-trans-Methyl decanoate	0.01
38.628	Methyl decanoate	0.07
39.429	delta-Elemene	0.02
40.331	Citronellyl acetate	2.39
40.902	Neryl acetate	0.02
42.190	Geranyl acetate	1.66
42.977	beta-Elemene	0.03
43.323	Ethyl decanoate	0.06
43.865	Sibirene	0.01
44.280	Longifolene	0.02
44.911	beta-Caryophyllene	0.03
47.161	alpha-Humulene	0.07
48.624	alpha-Amorphene	0.03
48.749	Germacrene D	0.04
49.124	delta-Selinene	0.02
49.241	beta-Selinene	0.02
49.415	gamma-Amorphene	0.01
49.680	alpha-Selinene	0.02
49.823	alpha-Muurolene	0.02
50.099	delta-Amorphene	0.02
50.706	gamma-Cadinene	0.01
51.007	delta-Cadinene	0.09
51.861	Unidentified	0.02
52.336	trans-alpha-Bisabolene	0.02
52.775	alpha-Elemol	0.01
55.450	Unidentified	0.01
56.414	Humulene epoxide II	0.01
57.171	Selina-6-en-4-ol	0.11
57.429	Unidentified	0.08
58.231	epi-alpha-Cadinol	0.02
58.356	Unidentified	0.04
58.972	Cadin-4-en-10-ol	0.07
59.141	Unidentified	0.01
62.272	2-trans6-trans-Farnesol	0.02
74.248	Myrcene Dimer I	0.01
		100.00