

Sample Information

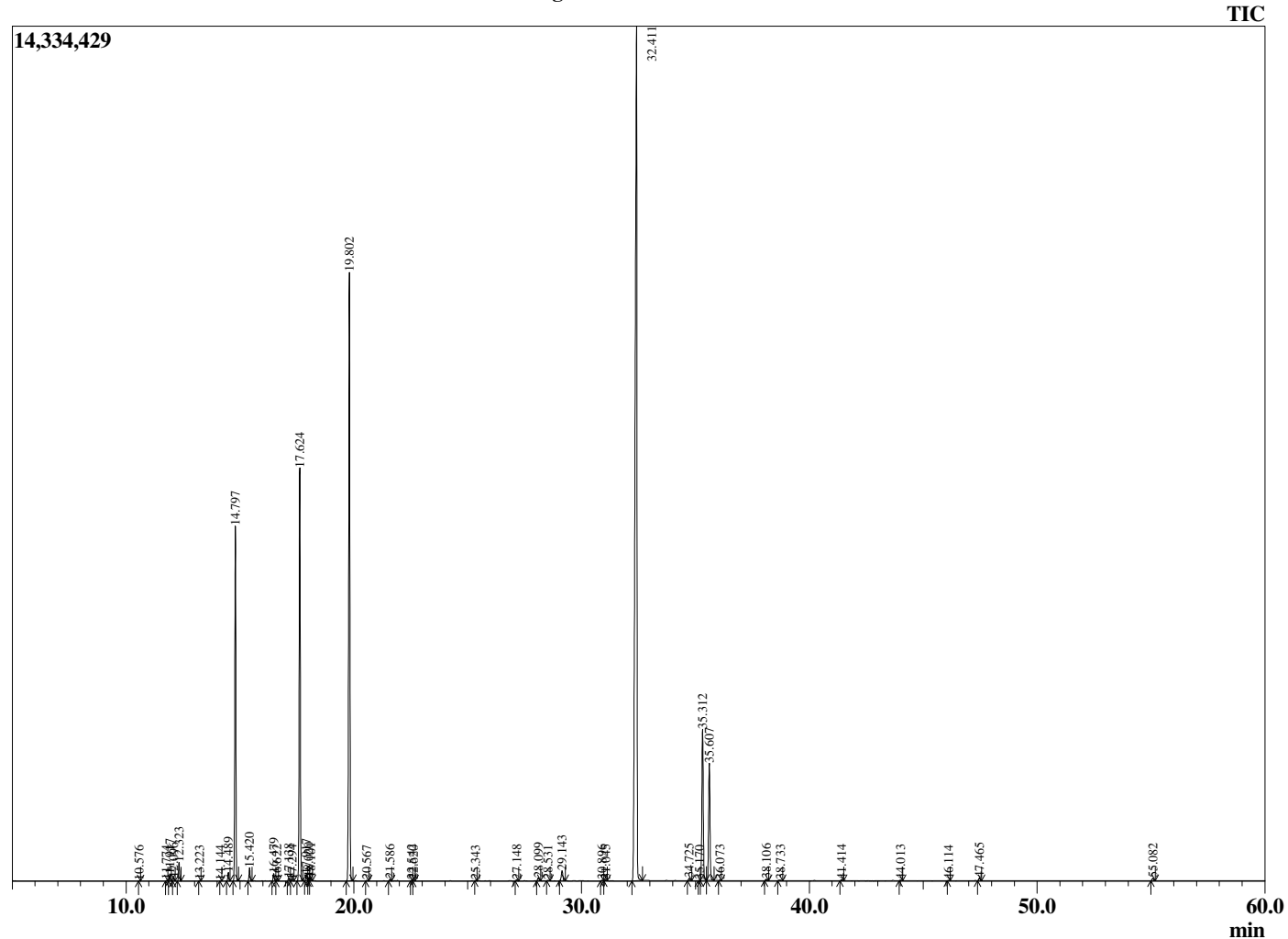
Analyzed by : Dr. Robert S. Pappas
 Analyzed : 3/7/2021 6:28:26 AM
 Sample Type : Essential Oil
 Sample Name : Cumin - Edens Garden
 Sample ID : BB22AH
 Injection Volume : 0.10
 Instrument ID : GC-4



Peak Report TIC

R.Time	Name	Area%
10.576	Nonane	0.01
11.774	Cumene	0.01
11.917	alpha-Thujene	0.17
12.096	1-Isopropylcyclohex-1-ene	0.08
12.323	alpha-Pinene	0.50
13.223	Camphene	0.01
14.144	Unidentified	0.01
14.489	Sabinene	0.25
14.797	beta-Pinene	10.21
15.420	Myrcene	0.38
16.479	alpha-Phellandrene	0.22
16.622	delta-3-Carene	0.03
17.138	alpha-Terpinene	0.08
17.294	meta-Cymene	0.03
17.624	para-Cymene	12.61
17.917	Limonene	0.19
18.020	beta-Phellandrene	0.09
18.101	1,8-Cineole	0.08
19.802	gamma-Terpinene	20.10
20.567	trans-Sabinene hydrate	0.02
21.586	Terpinolene	0.05
22.542	Linalool	0.03
22.620	cis-Sabinene hydrate	0.02
25.343	trans-Pinocarveol	0.01
27.148	Unidentified	0.04
28.099	Terpinen-4-ol	0.12
28.531	para-Cymen-8-ol	0.02
29.143	para-Menth-3-en-7-al	0.42
30.896	Unidentified	0.03
31.045	3-Isopropylphenol	0.03
32.411	Cuminal	43.45
34.725	Phellandral	0.10
35.170	Isobornyl acetate	0.01
35.312	para-Mentha-1,3-dien-7-al	5.76
35.607	para-Mentha-1,4-dien-7-al	4.47
36.073	Carvacrol	0.02
38.106	Unidentified	0.06
38.733	Unidentified	0.04
41.414	Daucene	0.03
44.013	trans-beta-Caryophyllene	0.03
46.114	(E)-beta-Farnesene	0.01
47.465	beta-Acoradiene	0.11
55.082	Carotol	0.10
		100.00

Chromatogram Cumin - Edens Garden



Comments:

The analysis of this Cumin batch sample meets the expected chemical profile for authentic essential oil of *Cuminum cyminum*. No contamination or adulteration was detected. The results provided in this GCMS quality analysis reflect the chemical composition of the oil and lot referenced above on the date of analysis.