

Sample Information

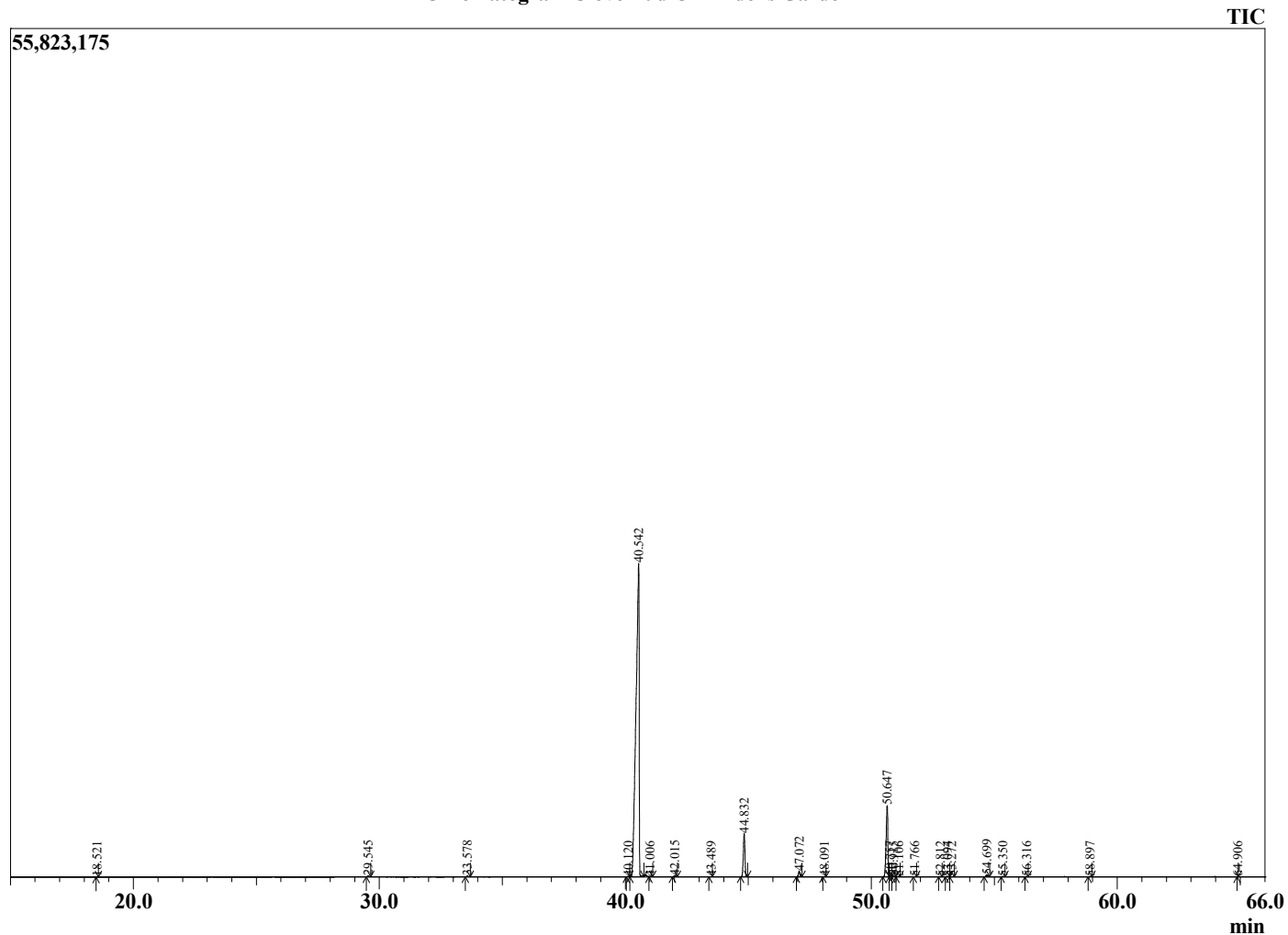
Analyzed by : Dr. Robert S. Pappas
 Analyzed : 7/19/2022 4:24:06 PM
 Sample Type : Essential Oil
 Sample Name : Clove Bud Oil - Edens Garden
 Sample ID : EG Lot #BB11GP
 Injection Volume : 0.10
 Instrument ID : GC-3



Peak Report TIC

R.Time	Name	Area%
18.521	Limonene	0.01
29.545	Methyl salicylate	0.10
33.578	Chavicol	0.10
40.120	alpha-Cubebene	0.05
40.542	Eugenol	82.03
41.006	Unidentified	0.03
42.015	alpha-Copaene	0.14
43.489	Methyleugenol	0.02
44.832	trans-beta-Caryophyllene	5.80
47.072	alpha-Humulene	0.68
48.091	10-beta-H-Cadina-1(6),4-diene	0.02
50.647	Eugenyl acetate	10.32
50.757	Unidentified	0.07
50.915	delta-Cadinene	0.10
51.106	trans-Calamenene	0.03
51.766	trans-Cadina-1,4-diene	0.02
52.812	Unidentified	0.03
53.094	Unidentified	0.05
53.272	Unidentified	0.03
54.699	Caryophyllene oxide	0.29
55.350	Unidentified	0.02
56.316	Humulene epoxide II	0.02
58.897	14-Hydroxycaryophyllene isomer	0.04
64.906	Unidentified	0.01
		100.00

Chromatogram Clove Bud Oil - Edens Garden



Comments:

The analysis of this Clove Bud Oil, batch sample meets the expected chemical profile for authentic essential oil of *Eugenia caryophyllata*. No contamination or adulteration was detected. The results provided in this GCMS quality analysis reflect the chemical composition of the oil and lot referenced above on the date of analysis.