

Sample Information

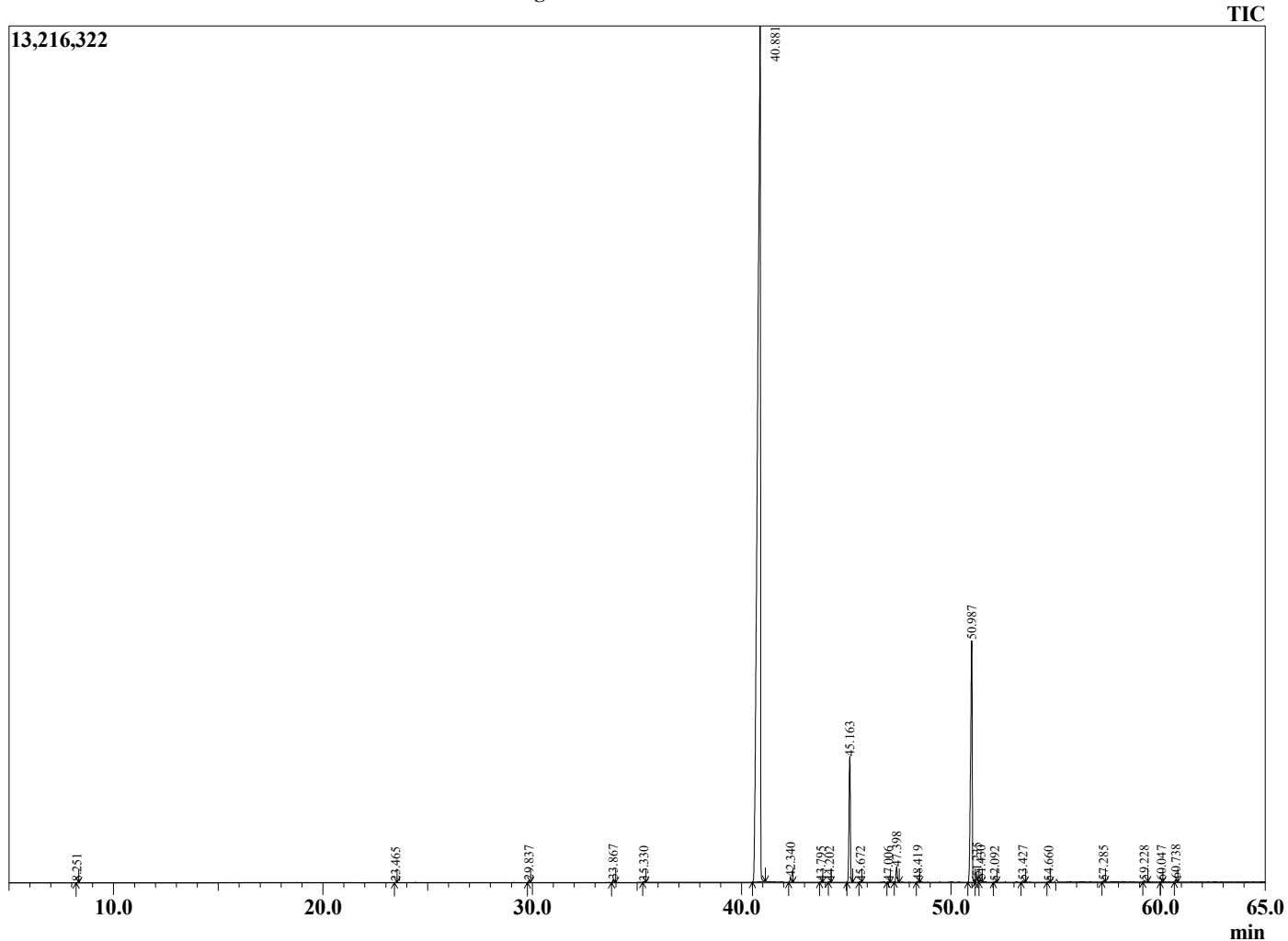
Analyzed by : Dr. Robert S. Pappas
 Analyzed : 7/11/2020 8:15:19 PM
 Sample Type : Essential Oil
 Sample Name : Clove Bud - Edens Garden
 Sample ID : BA18FN
 Injection Volume : 0.10
 Instrument ID : GC-3



Peak Report TIC

R.Time	Name	Area%
4.238	3-methylbutanal	0.01
4.351	2-methylbutanal	0.00
8.251	Furfural	0.02
23.465	Linalool	0.02
29.837	Methyl salicylate	0.07
33.867	Chavicol	0.10
35.330	Cinnamaldehyde	0.03
40.881	Eugenol	79.97
42.340	alpha-Copaene	0.20
43.795	Methyleugenol	0.04
44.202	cis-beta-Caryophyllene	0.02
45.163	beta-Caryophyllene	5.56
45.672	Unidentified	0.02
47.006	Humulen-(v1)	0.03
47.398	alpha-Humulene	0.66
48.419	10-beta-H-Cadina-1(6),4-diene	0.05
50.987	Eugenol acetate	12.45
51.235	delta-Cadinene	0.21
51.430	trans-Calamenene	0.10
52.092	trans-Cadine-1,4-diene	0.03
53.427	Caryophyllene oxide	0.06
54.660	Caryophyllene alcohol	0.05
57.285	Unidentified	0.05
59.228	Unidentified	0.08
60.047	Unidentified	0.05
60.738	Unidentified	0.11
		100.00

Chromatogram Clove Bud - Edens Garden



Comments:

The analysis of this Clove Bud batch sample meets the expected chemical profile for authentic essential oil of *Eugenia caryophyllata*. No contamination or adulteration was detected. The results provided in this GCMS quality analysis reflect the chemical composition of the oil and lot referenced above on the date of analysis.