

Sample Information

Analyzed by : Dr. Robert S. Pappas
 Analyzed : 10/10/2018 12:38:00 AM
 Sample Type : Essential Oil
 Sample Name : Clementine - Edens Garden
 Sample ID : AH28IB
 Injection Volume : 0.10
 Instrument ID : GC-2

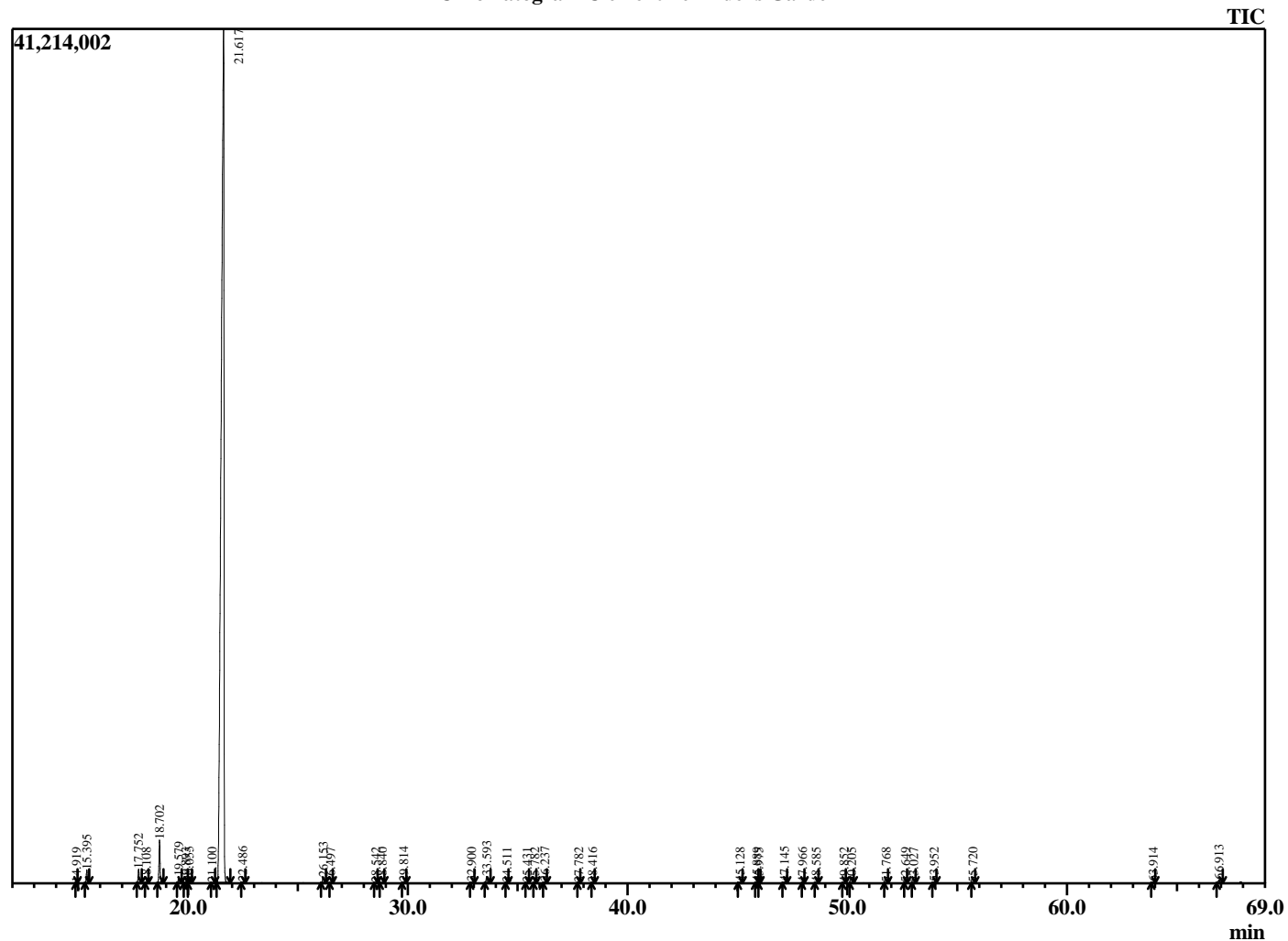


Peak Report TIC

R.Time	Name	Area%
14.919	alpha-Thujene	0.00
15.395	alpha-Pinene	0.55
17.752	Sabinene	0.61
18.108	beta-Pinene	0.03
18.702	Myrcene	1.90
19.579	Octanal	0.30
19.893	alpha-Phellandrene	0.04
20.055	3-Carene	0.06
21.100	para-Cymene	0.01
21.617	Limonene	95.00
22.486	E-beta-Ocimene	0.05
26.153	Linalool	0.29
26.497	Nonanal	0.01
28.542	cis-Limonene oxide	0.02
28.840	trans-Limonene oxide	0.03
29.814	Citronellal	0.06
32.900	alpha-Terpineol	0.03
33.593	Decanal	0.35
34.511	trans-Carveol	0.01
35.431	cis-Carveol	0.01
35.782	Neral	0.01
36.237	Carvone	0.04
37.782	Geranial	0.01
38.416	Perillaldehyde	0.02
45.128	alpha-Copaene	0.05
45.889	beta-Cubebene	0.04
45.975	beta-Elemene	0.01
47.145	Dodecanal	0.07
47.966	beta-Caryophyllene	0.01
48.585	beta-Copaene	0.03
49.852	E-beta-Farnesene	0.02
50.205	alpha-Humulene	0.01
51.768	Germacrene D	0.03
52.649	Bicyclogermacrene	0.01
53.027	E,E-alpha-Farnesene	0.03
53.952	delta-Cadinene	0.04
55.720	alpha-Elemol	0.02
63.914	beta-Sinensal	0.04
66.913	alpha-Sinensal	0.19
		100.00

This report is not valid 1 year after the report date.

Chromatogram Clementine - Edens Garden



Comments:

The analysis of this Clementine batch sample meets the expected chemical profile for authentic essential oil of *Citrus clementina*. No contamination or adulteration was detected.