

Sample Information

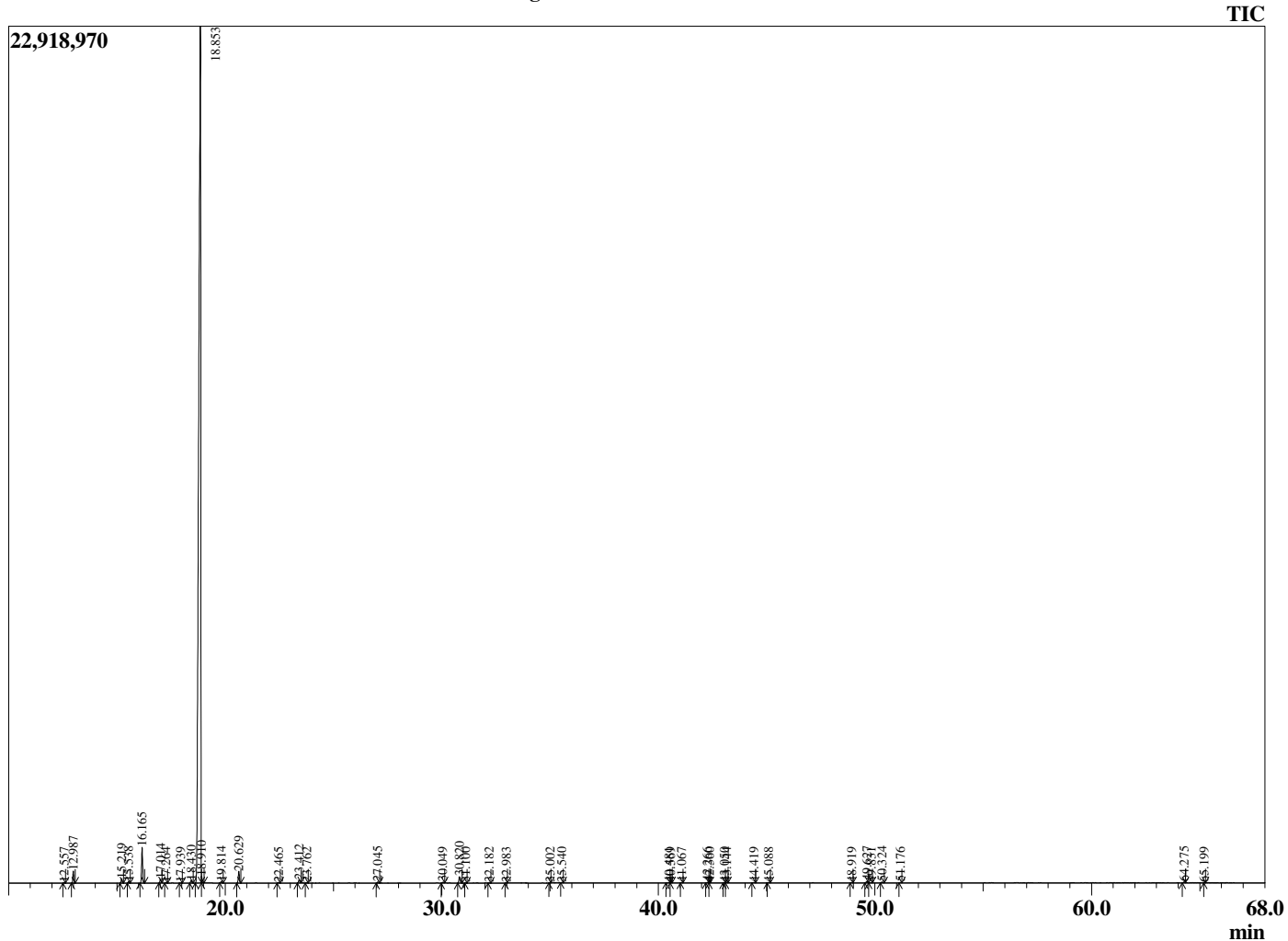
Analyzed by : Dr. Robert S. Pappas
 Analyzed : 10/20/2020 1:05:29 AM
 Sample Type : Essential Oil
 Sample Name : Clementine - Edens Garden
 Sample ID : BA29IM
 Injection Volume : 0.10
 Instrument ID : GC-3



Peak Report TIC

R.Time	Name	Area%
12.557	alpha-Thujene	0.03
12.987	alpha-Pinene	0.64
15.219	Sabinene	0.25
15.538	beta-Pinene	0.08
16.165	Myrcene	2.07
17.014	Octanal	0.24
17.264	alpha-Phellandrene	0.03
17.939	alpha-Terpinene	0.02
18.430	para-Cymene	0.17
18.853	Limonene	94.07
18.910	beta-Phellandrene	0.17
19.814	(E)-beta-Ocimene	0.08
20.629	gamma-Terpinene	0.72
22.465	Terpinolene	0.04
23.412	Linalool	0.21
23.762	Nonanal	0.03
27.045	Citronellal	0.06
30.049	alpha-Terpineol	0.06
30.820	Decanal	0.43
31.100	Octyl acetate	0.01
32.182	Citronellol	0.02
32.983	Neral	0.01
35.002	Geranial	0.02
35.540	Perillaldehyde	0.02
40.481	Unidentified	0.03
40.569	Eugenol	0.01
41.067	Neryl acetate	0.02
42.266	alpha-Copaene	0.04
42.360	Unidentified	0.01
43.050	beta-Cubebene	0.02
43.144	beta-Elemene	0.02
44.419	Dodecanal	0.04
45.088	beta-Caryophyllene	0.03
48.919	Germacrene D	0.02
49.627	Valencene	0.11
49.831	Viridiflorene	0.01
50.324	(E,E)-alpha-Farnesene	0.05
51.176	delta-Cadinene	0.03
64.275	alpha-Sinensal	0.06
65.199	Unidentified	0.02
		100.00

Chromatogram Clementine - Edens Garden



Comments:

The analysis of this Clementine batch sample meets the expected chemical profile for authentic essential oil of *Citrus clementina*. No contamination or adulteration was detected.

The results provided in this GCMS quality analysis reflect the chemical composition of the oil and lot referenced above on the date of analysis.