

Sample Information

Analyzed by : Dr. Robert S. Pappas
 Analyzed : 1/28/2019 5:45:52 PM
 Sample Type : Essential Oil
 Sample Name : Clary Sage - Edens Garden
 Sample ID : AI23AC
 Injection Volume : 0.10
 Instrument ID : GC-4

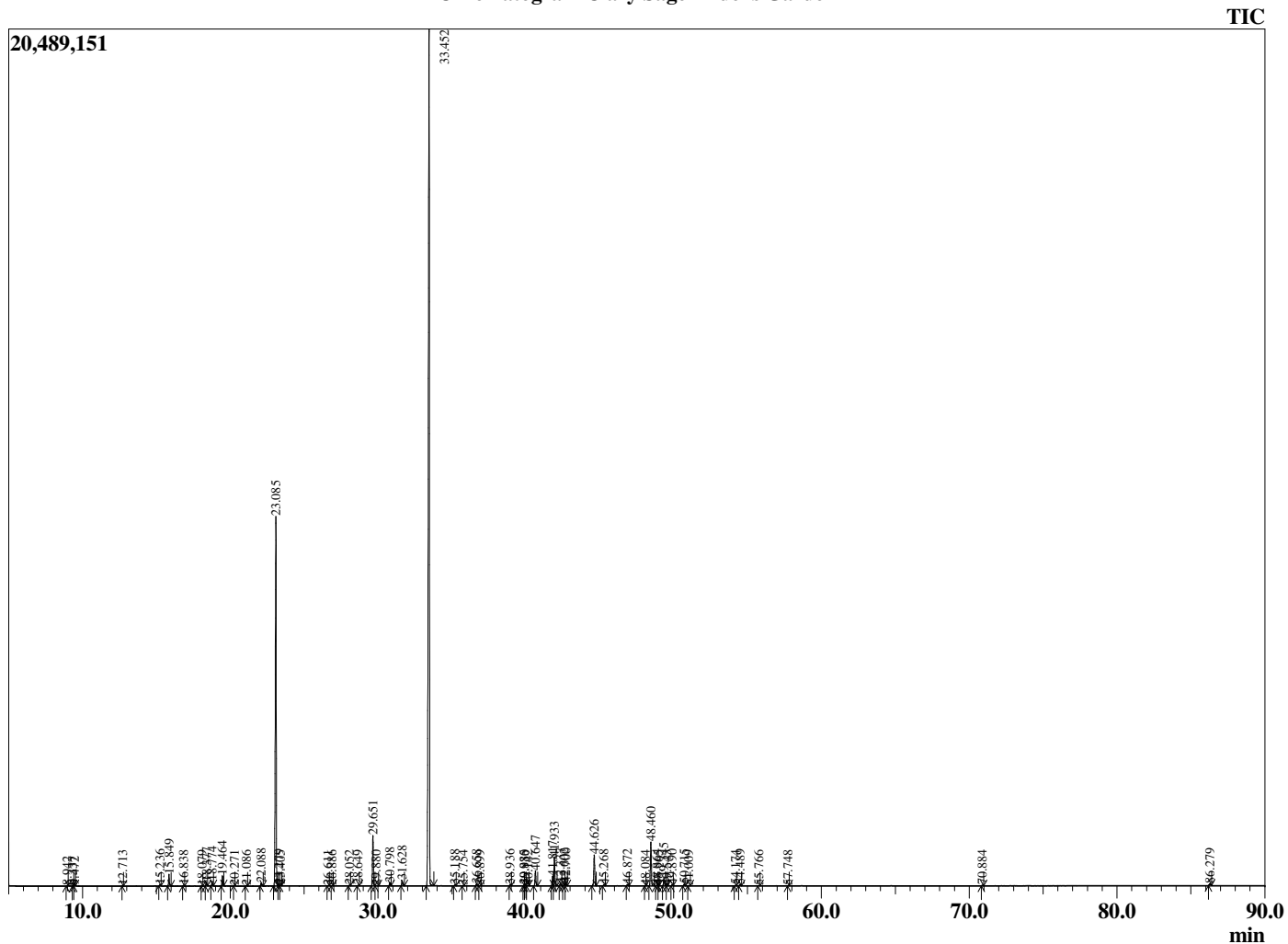


Peak Report TIC

R.Time	Name	Area%
8.942	Hex-3(Z)-enol	0.02
9.337	Hex-2(E)-enol	0.02
9.472	n-Hexanol	0.02
12.713	alpha-Pinene	0.01
15.236	beta-Pinene + 1-Octen-3-ol	0.06
15.849	Myrcene	0.57
16.838	Unidentified	0.04
18.079	para-Cymene	0.02
18.377	Limonene	0.18
18.774	cis-beta-Ocimene	0.23
19.464	trans-beta-Ocimene	0.50
20.271	gamma-Terpinene	0.02
21.086	cis-Linalool oxide (furanoid)	0.03
22.088	Terpinolene	0.17
23.085	Linalool	21.48
23.279	Hotrienol	0.06
23.405	Nonanal	0.03
26.611	Unidentified	0.03
26.886	Unidentified	0.01
28.052	Borneol	0.04
28.649	Terpinen-4-ol	0.04
29.651	alpha-Terpineol	2.84
29.880	Unidentified	0.03
30.798	Linalyl formate	0.18
31.628	Nerol	0.31
33.452	Linalyl acetate	63.17
35.188	Neryl formate	0.05
35.754	Bornyl acetate	0.02
36.658	Geranyl formate	0.09
36.899	Tridecane	0.02
38.936	delta-Elementene	0.06
39.885	alpha-Terpinyl acetate	0.05
39.930	alpha-Cubebene	0.03
40.142	Eugenol	0.02
40.647	Neryl acetate	0.89
41.817	alpha-Copaene	0.59
41.933	Geranyl acetate	1.69
42.337	beta-Bourbonene	0.14
42.602	beta-Cubebene	0.16
42.700	beta-Elementene	0.17
44.626	beta-Caryophyllene	2.01
45.268	beta-Copaene	0.05
46.872	alpha-Humulene	0.08
48.084	Unidentified	0.01
48.460	Germacrene D	2.72
48.864	Valencene	0.06
48.965	Unidentified	0.02
49.345	Bicyclogermacrene	0.47
49.543	alpha-Murolene	0.01
49.890	(E,E)-alpha-Farnesene	0.04
50.715	delta-Cadinene	0.10
51.009	Unidentified	0.02
54.174	Spathulenol	0.03
54.489	Caryophyllene oxide	0.08
55.766	Unidentified	0.03
57.748	Unidentified	0.02
70.884	Sclareoloxide	0.03
86.279	Sclareol	0.13
		100.00

This report is valid for 1 year from the analyzed date.

Chromatogram Clary Sage - Edens Garden



Comments:

The analysis of this Clary Sage batch sample meets the expected chemical profile for authentic essential oil of *Salvia sclarea*. No contamination or adulteration was detected.