

Sample Information

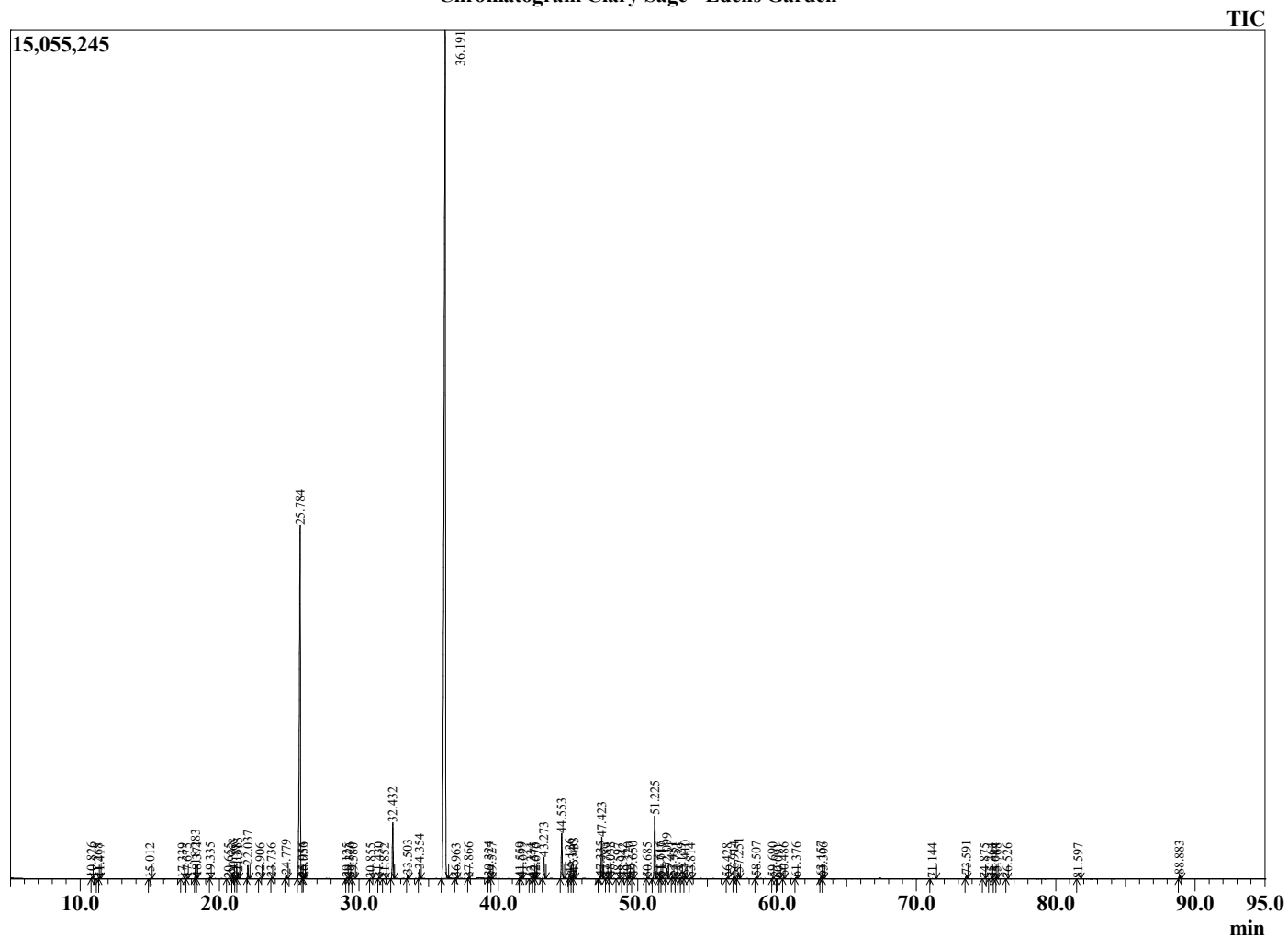
Analyzed by : Dr. Robert S. Pappas
 Analyzed : 7/27/2022 10:36:18 PM
 Sample Type : Essential Oil
 Sample Name : Clary Sage - Edens Garden
 Sample ID : EG Lot # BB27JH
 Injection Volume : 0.10
 Instrument ID: : GC-2



Peak Report TIC

R.Time	Name	Area%
10.826	(Z)-3-Hexenol	0.04
11.268	(E)-2-Hexenol	0.02
11.417	1-Hexanol	0.02
15.012	alpha-Pinene	0.01
17.339	Sabinene	0.02
17.675	Unidentified	0.04
18.283	Myrcene	0.53
18.371	Herboxide I	0.05
19.335	Herboxide II	0.04
20.655	para-Cymene	0.01
20.968	Limonene	0.18
21.188	1,8-Cineole	0.01
21.315	(Z)-beta-Ocimene	0.23
22.037	(E)-beta-Ocimene	0.52
22.906	gamma-Terpinene	0.03
23.736	cis-Linalool oxide (furanoid)	0.02
24.779	Terpinolene	0.18
25.784	Linalool	19.59
25.956	Hotrienol	0.04
26.053	Nonanal	0.04
29.125	Camphor	0.03
29.326	Nerol oxide	0.03
29.580	Unidentified	0.03
30.855	Borneol	0.02
31.430	Terpinen-4-ol	0.03
31.852	para-Cymen-8-ol	0.01
32.432	alpha-Terpineol	2.44
33.503	Linalyl formate	0.15
34.354	Nerol	0.39
36.191	Linalyl acetate	63.53
36.963	Unidentified	0.02
37.866	Neryl formate	0.03
39.324	Geranyl formate	0.07
39.527	Tridecane	0.03
41.559	(Z)-3-Hexenyl isobutyrate	0.04
41.699	delta-Elementene	0.04
42.334	Unidentified	0.02
42.575	alpha-Terpinyl acetate	0.05
42.676	alpha-Cubebene	0.02
43.273	Neryl acetate	0.94
44.553	Geranyl acetate	2.30
45.126	beta-Bourbonene	0.20
45.346	beta-Cubebene	0.12
45.433	trans-beta-Elementene	0.27
47.335	beta-Ylangene	0.07
47.423	trans-beta-Caryophyllene	1.99
47.789	Unidentified	0.03
48.038	beta-Copaene	0.05
48.597	Aromadendrene	0.03
48.942	Unidentified	0.04
49.320	(E)-beta-Farnesene	0.05
49.650	alpha-Humulene	0.09
50.685	cis-Muurolo-4(14),5-diene	0.03
51.225	Germacrene D	2.96
51.616	Eremophilene	0.09
51.717	beta-Selinene	0.03
52.099	Bicyclogermacrene	0.48
52.481	(E,E)-alpha-Farnesene	0.09
52.751	beta-Bisabolene	0.04
53.129	gamma-Cadinene	0.02
53.410	delta-Cadinene	0.13
53.814	4-epi-cis-Dihydroagarofuran	0.02

Chromatogram Clary Sage - Edens Garden



Comments:

The analysis of this Clary sage batch sample meets the expected chemical profile for authentic essential oil of *Salvia sclarea*.

No contamination or adulteration was detected. The results provided in this GCMS quality analysis reflect the chemical composition of the oil and lot referenced above on the date of analysis.

©Copyright 2022 by Essential Oil University. All rights reserved. Any publishing, copying, use, dissemination, or distribution of this report, including online, without the express written permission of Essential Oil University is strictly prohibited.

R.Time	Name	Area%
56.428	1,5-Epoxyshybal-4(14)-ene	0.03
56.914	Spathulenol	0.10
57.251	Caryophyllene oxide	0.32
58.507	Unidentified	0.09
59.690	Unidentified	0.03
60.091	Unidentified	0.03
60.486	Unidentified	0.07
61.376	alpha-Eudesmol	0.07
63.157	Acorenone A	0.09
63.306	Acorenone B	0.04
71.144	Phytone	0.02
73.591	Sclareoloxide	0.17
74.875	Unidentified	0.02
75.364	Unidentified	0.03
75.644	Unidentified	0.02
75.768	Unidentified	0.01
76.526	Unidentified	0.02
81.597	Unidentified	0.01
88.883	Sclareol	0.19
		100.00