

Sample Information

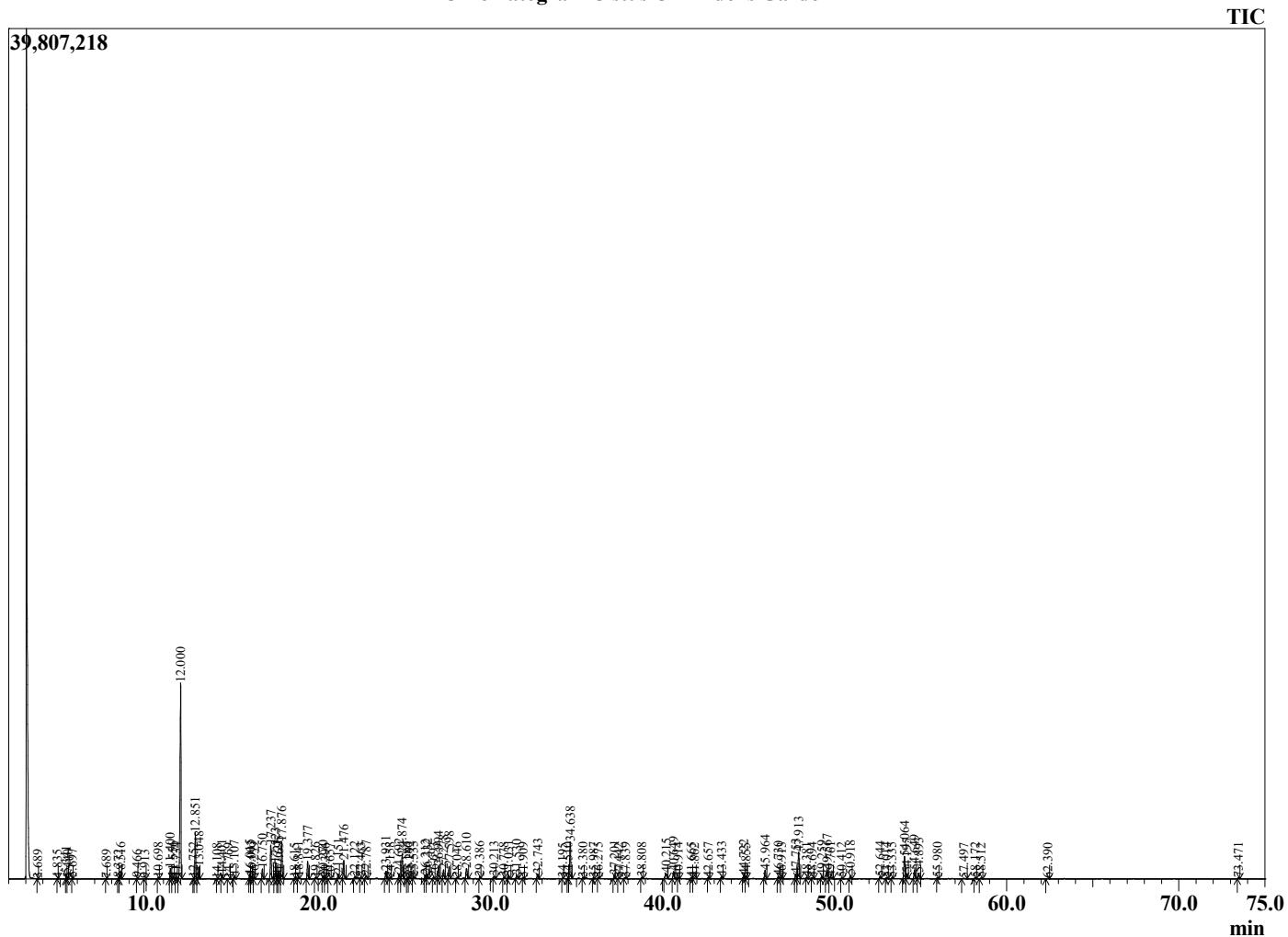
Analyzed by : Dr. Robert S. Pappas  
 Analyzed : 7/13/2022 4:24:04 AM  
 Sample Type : Essential Oil  
 Sample Name : Cistus Oil - Edens Garden  
 Sample ID : EG Lot #BC06CC  
 Injection Volume : 0.10  
 Instrument ID : GC-2



Peak Report TIC

R.Time	Name	Area%
3.689	2,4-Hexadiene	0.02
4.835	Unidentified	0.02
5.341	Unidentified	0.29
5.440	Unidentified	0.05
5.697	Toluene	0.09
7.689	6,6-Dimethylhepta-2,4-diene isomer	0.03
8.372	Unidentified	0.08
8.516	6,6-Dimethylhepta-2,4-diene	0.67
9.466	Unidentified	0.07
9.913	Styrene	0.05
10.698	Unidentified	0.14
11.400	Tricyclene	1.02
11.556	alpha-Thujene	0.22
11.734	Unidentified	0.10
12.000	alpha-Pinene	25.97
12.752	alpha-Fenchene	0.10
12.851	Camphene	4.76
13.048	Thuja-2,4(10)-diene	1.23
14.108	Sabinene	0.06
14.401	beta-Pinene	0.45
14.769	6-Methyl hept-5-en-2-one	0.06
15.107	Unidentified	0.35
16.015	Unidentified	0.45
16.093	alpha-Phellandrene	0.30
16.259	para-Cymenene	0.11
16.750	alpha-Terpinene	1.13
17.237	para-Cymene	4.15
17.523	Limonene	1.85
17.621	beta-Phellandrene	0.43
17.695	1,8-Cineole	0.88
17.876	2,6,6-Trimethyl cyclohexanone	4.42
18.615	Unidentified	0.06
18.841	Unidentified	0.23
19.377	gamma-Terpinene	2.14
19.826	Acetophenone	0.17
20.270	Pinol	0.34
20.396	Unidentified	0.09
20.657	Unidentified	0.09
21.151	Terpinolene	0.53
21.476	para-Cymenene	2.41
22.122	Linalool	0.30
22.463	Nonanal	0.17
22.787	cis-Rose oxide	0.54
23.931	alpha-Campholenal	0.99
24.158	Unidentified	0.09
24.692	trans-3-Nonen-2-one	0.72
24.874	trans-Pinocarveol	3.33
25.186	(E)-Tagetone	0.18
25.292	Camphor	0.33
25.533	alpha-Phellandren-8-ol	0.20
26.212	Pinocamphone	0.47
26.332	Pinocarvone	0.63
26.693	Isoborneol	0.21
26.994	Borneol	1.70
27.278	Isopinocampnone	1.13
27.598	Terpinen-4-ol	1.55
28.046	para-Cymen-8-ol	0.14
28.610	Myrtenal	1.70
29.386	Verbenone	0.23
30.213	trans-Carveol	0.28
30.778	Unidentified	0.14
31.031	(Z)-Ocimenone	0.43

Chromatogram Cistus Oil - Edens Garden



Comments:

The analysis of this Cistus Oil batch sample meets the expected chemical profile for authentic essential oil of Cistus ladanifer.

No contamination or adulteration was detected. The results provided in this GCMS quality analysis reflect the chemical composition of the oil and lot referenced above on the date of analysis.

©Copyright 2022 by Essential Oil University. All rights reserved. Any publishing, copying, use, dissemination, or distribution of this report, including online, without the express written permission of Essential Oil University is strictly prohibited.

R.Time	Name	Area%
31.530	Unidentified	0.54
31.909	Carvone	0.11
32.743	Unidentified	0.64
34.195	Phellandral	0.07
34.510	trans-alpha-Necrodol acetate	0.13
34.638	Bornyl acetate	5.30
35.380	trans-Pinocarvyl acetate	0.13
35.987	Unidentified	0.11
36.275	Unidentified	0.14
37.201	Myrtenyl acetate	0.42
37.442	Unidentified	0.09
37.839	trans-Carvyl acetate	0.22
38.808	Ethyl hydrocinnamate	0.22
40.215	Isoledene	1.09
40.649	alpha-Copaene	1.11
40.914	Unidentified	0.11
41.665	alpha-Duprezianene	0.16
41.862	Unidentified	0.11
42.657	Cyperene	0.09
43.433	beta-Caryophyllene	0.28
44.722	Unidentified	0.47
44.855	Unidentified	0.09
45.964	9-epi-Caryophyllene	1.27
46.730	10-beta-H-Cadina-1(6),4-diene	0.33
46.913	trans-Cadina-1(6),4-diene	0.18
47.753	gamma-Gurjunene	0.69
47.913	Viridiflorene	4.06
48.381	alpha-Murolene	0.22
48.694	Unidentified	0.10
49.259	Unidentified	0.39
49.567	delta-Cadinene	1.41
49.761	trans-Calamenene	0.43
50.412	trans-Cadina-1,4-diene	0.11
50.918	alpha-Calacorene	0.48
52.644	Palustrol	0.28
53.014	Spathulenol	0.15
53.335	Longifolenaldehyde	0.11
54.064	Viridiflorol	3.45
54.195	Cubeban-11-ol	0.69
54.649	Ledol	1.20
54.893	Copaborneol	0.83
55.980	1-Epicubenol	0.09
57.497	alpha-Eudesmol	0.19
58.172	Unidentified	0.19
58.512	Cadalene	0.13
62.390	Unidentified	0.12
73.471	Unidentified	0.17
		100.00