

Sample Information

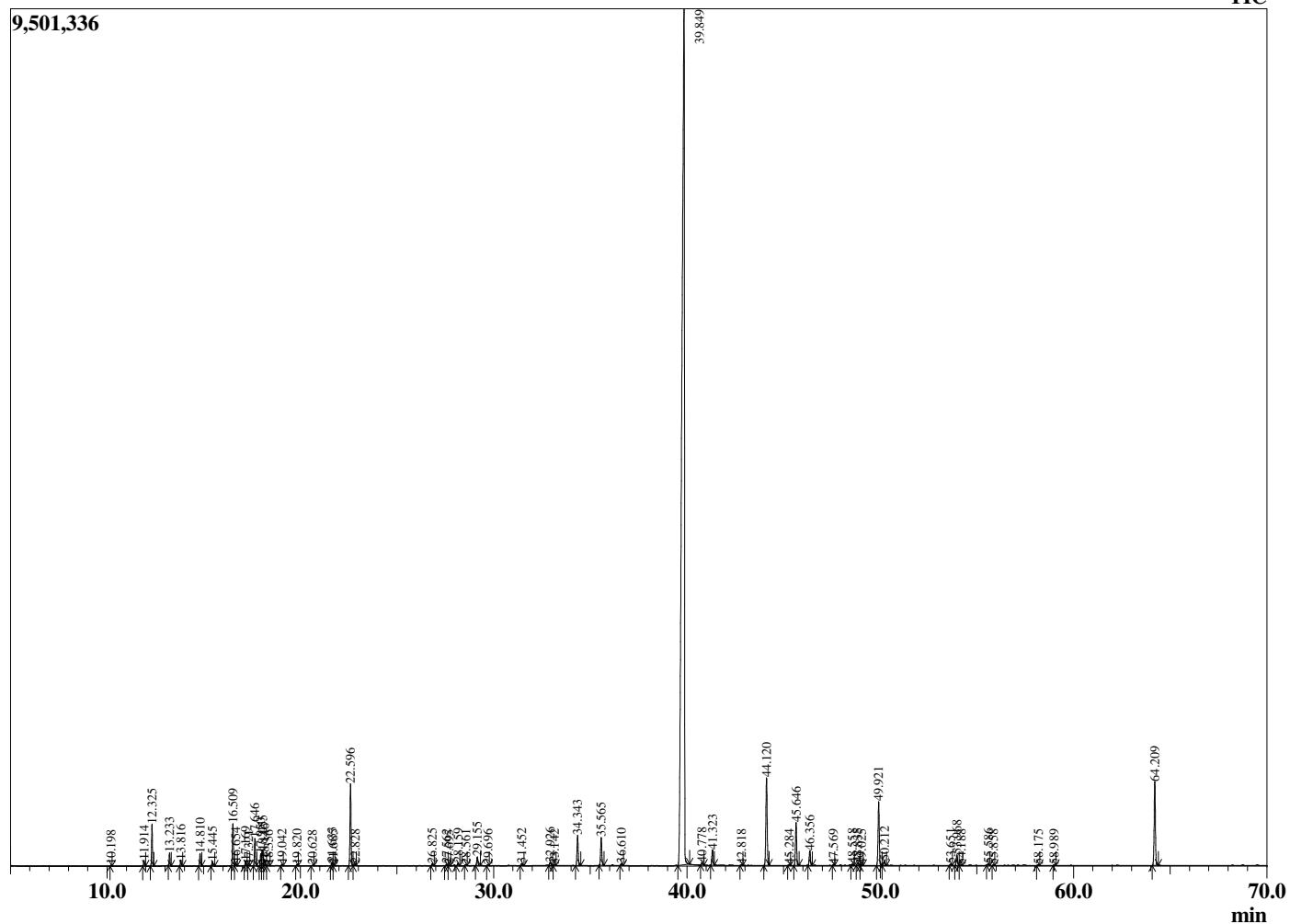
Analyzed by : Dr. Robert S. Pappas
 Analyzed : 10/13/2018 5:31:40 AM
 Sample Type : Essential Oil
 Sample Name : Cinnamon Leaf - Edens Garden
 Sample ID : AH01JC
 Injection Volume : 0.10
 Instrument ID : GC-3



Peak Report TIC

R.Time	Name	Area%
10.198	Styrene	0.02
11.914	alpha-Thujene	0.15
12.325	alpha-Pinene	1.16
13.233	Camphene	0.37
13.816	Benzaldehyde	0.18
14.810	beta-Pinene	0.38
15.445	Myrcene	0.15
16.509	alpha-Phellandrene	1.36
16.654	delta-3-Carene	0.10
17.169	alpha-Terpinene	0.14
17.321	ortho-Cymene	0.02
17.646	para-Cymene	0.90
17.950	Limonene	0.40
18.055	beta-Phellandrene	0.50
18.146	1,8-Cineole	0.23
18.356	cis-beta-Ocimene	0.03
19.042	trans-beta-Ocimene	0.05
19.820	gamma-Terpinene	0.04
20.628	cis-Linalool oxide (furanoid)	0.03
21.633	Terpinolene	0.12
21.685	trans-Linalool oxide (furanoid)	0.02
22.596	Linalool	2.92
22.828	2-Methylbutyl 2-methylbutyrate	0.06
26.825	Hydrocinnamaldehyde + Benzyl acetate	0.08
27.562	Borneol	0.06
27.695	Unidentified	0.02
28.159	Terpinen-4-ol	0.10
28.561	para-Cymen-8-ol	0.03
29.155	alpha-Terpineol	0.34
29.696	alpha-Phellandrene epoxide	0.03
31.452	Hydrocinnamyl alcohol	0.09
32.926	Chavicol	0.12
33.142	2-Phenethyl acetate	0.02
34.343	(E)-Cinnamaldehyde	1.19
35.565	Safrole	1.11
36.610	(E)-Cinnamyl alcohol	0.09
39.849	Eugenol	73.19
40.778	Hydrocinnamyl acetate	0.10
41.323	alpha-Copaene	0.66
42.818	Methyleugenol	0.03
44.120	beta-Caryophyllene	3.78
45.284	Aromadendrene	0.04
45.646	trans-Cinnamyl acetate	1.70
46.356	alpha-Humulene	0.62
47.569	trans-Cadina-1(6),4-diene	0.02
48.558	Viridiflorene	0.06
48.835	Bicyclogermacrene	0.11
49.025	alpha-Murolene	0.03
49.921	Eugenyl acetate	2.55
50.212	delta-Cadinene	0.18
53.651	Spathulenol	0.06
53.968	Caryophyllene oxide	0.48
54.188	Globulol	0.02
55.586	Humulene epoxide II	0.07
55.858	Tetradecanal	0.02
58.175	epi-alpha-Cadinol	0.03
58.989	Unidentified	0.02
64.209	Benzyl benzoate	3.59
		100.00

Chromatogram Cinnamon Leaf - Edens Garden



Comments:

The analysis of this Cinnamon Leaf batch sample meets the expected chemical profile for authentic essential oil of *Cinnamomum zeylanicum*. No contamination or adulteration was detected.