

Sample Information

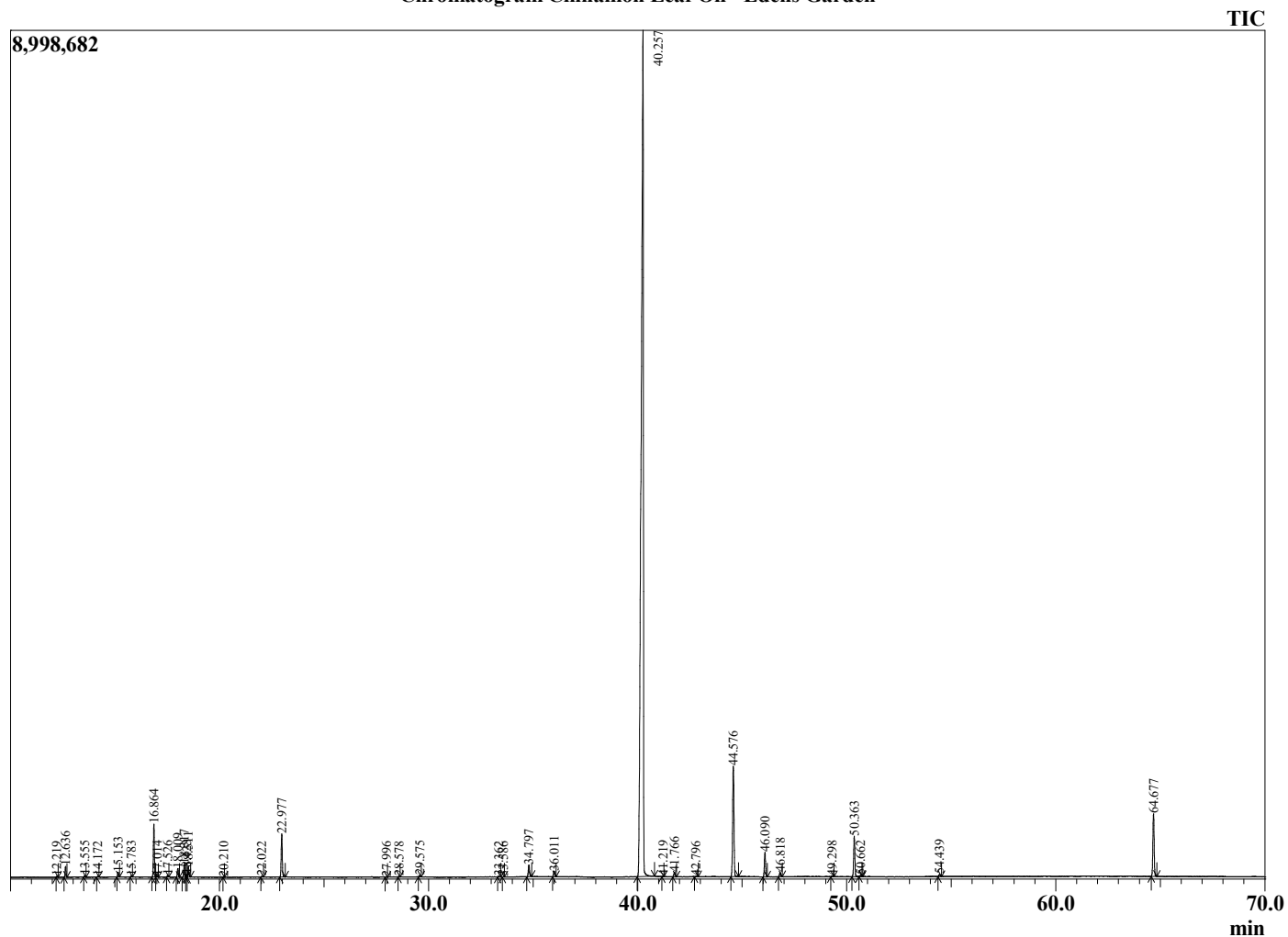
Analyzed by : Dr. Robert S. Pappas
Analyzed : 7/27/2022 9:10:31 AM
Sample Type : Essential Oil
Sample Name : Cinnamon Leaf Oil - Edens Garden
Sample ID : EG Lot # BB17JG
Injection Volume : 0.10
Instrument ID: : GC-3



Peak Report TIC

R.Time	Name	Area%
12.219	alpha-Thujene	0.04
12.636	alpha-Pinene	0.42
13.555	Camphene	0.06
14.172	Benzaldehyde	0.03
15.153	beta-Pinene	0.20
15.783	Myrcene	0.05
16.864	alpha-Phellandrene	2.24
17.014	delta-3-Carene	0.07
17.526	alpha-Terpinene	0.07
18.009	para-Cymene	0.38
18.317	Limonene	0.58
18.423	beta-Phellandrene	0.11
18.511	1,8-cineole	0.47
20.210	gamma-Terpinene	0.01
22.022	Terpinolene	0.03
22.977	Linalool	2.01
27.996	Borneol	0.02
28.578	Terpinen-4-ol	0.02
29.575	alpha-Terpineol	0.08
33.362	Hydrocinnamaldehyde	0.04
33.586	Unidentified	0.01
34.797	(E)-Cinnamaldehyde	0.62
36.011	Safrole	0.29
40.257	Eugenol	78.40
41.219	Hydrocinnamyl acetate	0.04
41.766	alpha-Copaene	0.27
42.796	Unidentified	0.03
44.576	beta-Caryophyllene	6.24
46.090	(E)-Cinnamyl acetate	1.24
46.818	alpha-Humulene	0.24
49.298	Unidentified	0.06
50.363	Eugenyl acetate	2.06
50.662	delta-Cadinene	0.05
54.439	Caryophyllene oxide	0.12
64.677	Benzyl benzoate	3.38
		100.00

Chromatogram Cinnamon Leaf Oil - Edens Garden



Comments:

The analysis of this Cinnamon Leaf batch sample meets the expected chemical profile for authentic essential oil of Cinnamomum zeylanicum.

No contamination or adulteration was detected. The results provided in this GCMS quality analysis reflect the chemical composition of the oil and lot referenced above on the date of analysis.