

Sample Information

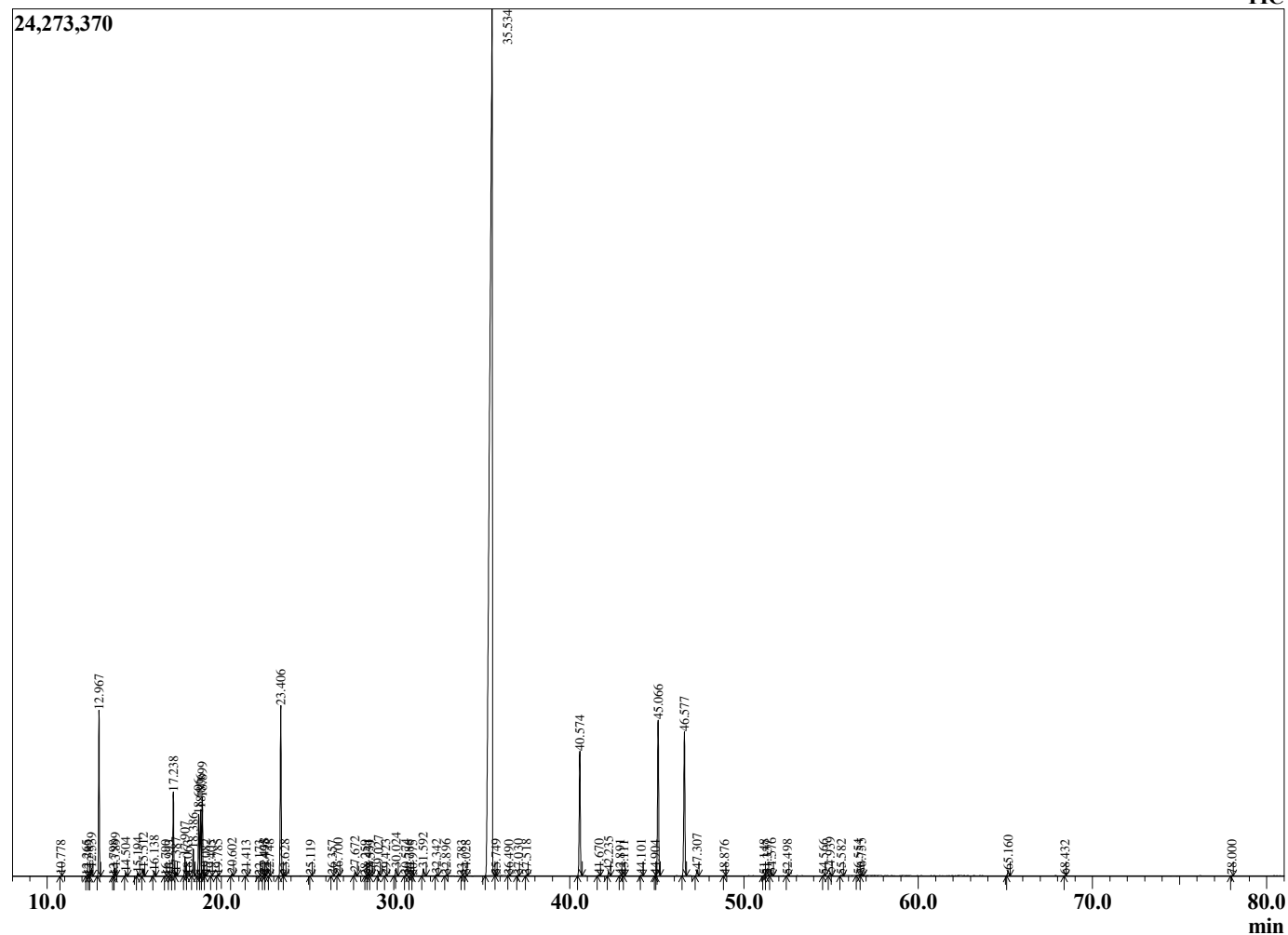
Analyzed by : Dr. Robert S. Pappas  
 Analyzed : 11/5/2020 5:54:27 AM  
 Sample Type : Essential Oil  
 Sample Name : Cinnamon Bark Oil - Edens Garden  
 Sample ID : BA29IJ  
 Injection Volume : 0.10  
 Instrument ID : GC-3



Peak Report TIC

R.Time	Name	Area%
10.778	Styrene	0.01
12.265	Hashishene	0.01
12.389	Tricyclene	0.00
12.539	alpha-Thujene	0.17
12.967	alpha-Pinene	3.67
13.798	alpha-Fenchene	0.01
13.899	Camphene	0.18
14.504	Benzaldehyde	0.09
15.194	Sabinene	0.07
15.512	beta-Pinene	0.17
16.138	Myrcene	0.12
16.790	Unidentified	0.01
16.993	Octanal	0.01
17.238	alpha-Phellandrene	2.09
17.387	delta-3-Carene	0.08
17.907	alpha-Terpinene	0.47
18.063	meta-Cymene	0.01
18.386	para-Cymene	0.66
18.696	Limonene	1.59
18.806	beta-Phellandrene	1.67
18.899	1,8-Cineole	1.95
19.082	(Z)-beta-Ocimene	0.03
19.405	Butyl 2-methylbutyrate	0.00
19.785	(E)-beta-Ocimene	0.02
20.602	gamma-Terpinene	0.05
21.413	cis-Linalool oxide (furanoid)	0.01
22.173	Isoterpinolene	0.00
22.438	Terpinolene	0.06
22.495	trans-Linalool oxide (furanoid)	0.01
22.748	Dehydro-para-cymene	0.01
23.406	Linalool	4.69
23.628	cis-para-Menth-2-en-1-ol	0.02
25.119	trans-para-Menth-2-en-1-ol	0.01
26.357	2-Cyclohexen-1-ol, 1-methyl-4-(1-methylethy-	0.01
26.700	Camphor	0.06
27.672	Hydrocinnamaldehyde	0.11
28.259	Unidentified	0.00
28.431	Borneol	0.03
28.559	Unidentified	0.01
29.027	Terpinen-4-ol	0.14
29.423	Unidentified	0.01
30.024	alpha-Terpineol	0.23
30.574	alpha-Phellandrene epoxide	0.02
30.786	Decanal	0.01
30.975	Unidentified	0.00
31.592	(Z)-Cinnamaldehyde	0.21
32.342	Hydrocinnamic alcohol	0.05
32.896	2-Methoxybenzaldehyde	0.02
33.783	Geraniol	0.00
34.028	Unidentified	0.01
35.534	(E)-Cinnamaldehyde	66.69
35.749	Unidentified	0.01
36.490	Unidentified	0.01
37.030	Unidentified	0.02
37.518	(E)-Cinnamyl alcohol	0.02
40.574	Eugenol	3.83
41.670	Benzenepropanol acetate	0.03
42.235	alpha-Copaene	0.13
42.891	Unidentified	0.01
43.111	beta-Elementene	0.01
44.101	cis-beta-Caryophyllene	0.02
44.904	Unidentified	0.01

Chromatogram Cinnamon Bark Oil - Edens Garden



Comments:

The analysis of this Cinnamon Bark batch sample meets the expected chemical profile for authentic essential oil of *Cinnamomum zeylanicum*. No contamination or adulteration was detected. The results provided in this GCMS quality analysis reflect the chemical composition of the oil and lot referenced above on the date of analysis.

R.Time	Name	Area%
45.066	trans-beta-Caryophyllene	5.06
46.577	trans-Cinnamyl acetate	4.53
47.307	alpha-Humulene	0.21
48.876	alpha-Curcumene	0.01
51.148	delta-Cadinene	0.02
51.337	cis-Calamenene	0.01
51.576	ortho-Methoxycinnamaldehyde	0.06
52.498	alpha-Calacorene	0.02
54.566	Unidentified	0.02
54.939	Caryophyllene oxide	0.10
55.582	Unidentified	0.02
56.554	Humulene epoxide II	0.02
56.755	Tetradecanal	0.05
65.160	Benzyl benzoate	0.16
68.432	Unidentified	0.01
78.000	Octadecanal	0.01
		100.00