

Sample Information

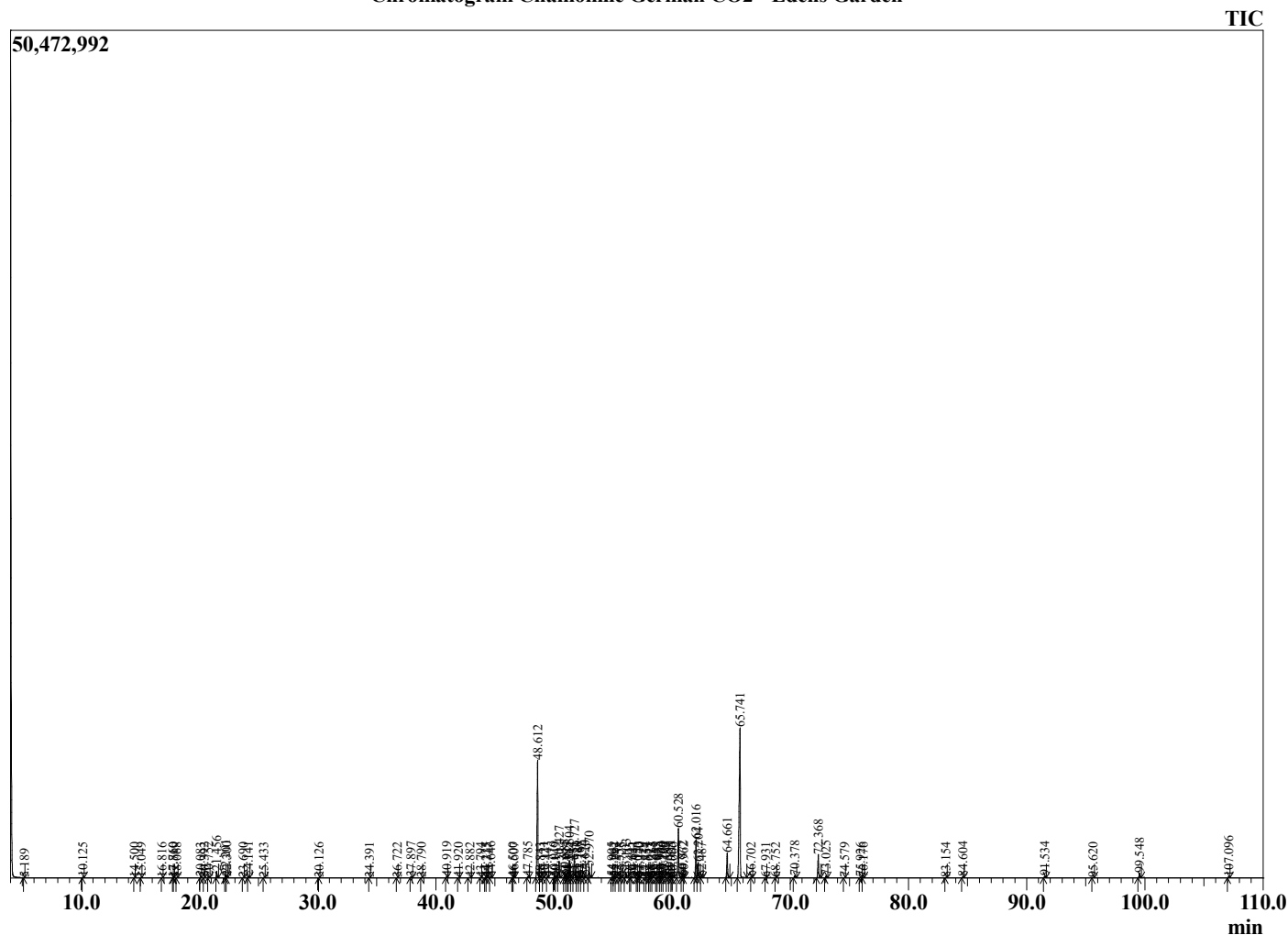
Analyzed by : Dr. Robert S. Pappas
 Analyzed : 7/19/2022 10:59:54 PM
 Sample Type : Essential Oil
 Sample Name : Chamomile German CO2 - Edens Garden
 Sample ID : EG Lot #BB18GL
 Injection Volume : 0.10
 Instrument ID : GC-2



Peak Report TIC

R.Time	Name	Area%
5.189	2-Methylbutanal	0.01
10.125	Ethyl 2-methylbutyrate	0.08
14.500	alpha-Pinene	0.02
15.049	Propyl 2-methylbutyrate	0.04
16.816	Sabinene	0.03
17.760	Myrcene	0.03
17.810	2-Pentylfuran	0.03
18.068	Yomogi alcohol	0.04
20.083	para-Cymene	0.07
20.392	Limonene	0.04
20.752	(Z)-beta-Ocimene	0.13
21.456	(E)-beta-Ocimene	0.78
22.201	Artemisia ketone	0.39
22.300	gamma-Terpinene	0.16
23.690	Artemisia alcohol	0.05
24.141	Terpinolene	0.20
25.433	Nonanal	0.05
30.126	Borneol	0.02
34.391	3-Hexenyl isovalerate	0.02
36.722	Geranial	0.03
37.897	(E)-Anethole	0.15
38.790	Tridecane	0.06
40.919	delta-Elementene	0.12
41.920	Unidentified	0.03
42.882	Unidentified	0.12
43.794	alpha-Copaene	0.04
44.225	Modhephene	0.03
44.315	Unidentified	0.04
44.646	alpha-Isocomene	0.18
46.500	beta-Ylangne	0.03
46.607	trans-beta-Caryophyllene	0.11
47.785	Aromadendrene	0.13
48.612	(E)-beta-Farnesene	20.00
48.843	alpha-Humulene	0.03
49.121	Alloaromadendrene	0.13
49.443	Dehydrosesquiceneole	0.11
50.019	trans-Cadina-1(6),4-diene	0.13
50.149	gamma-Curcumene	0.04
50.427	Germacrene D	2.49
50.885	(Z,Z)-alpha-Farnesene	0.53
51.023	Viridiflorene	0.25
51.185	Unidentified	0.05
51.304	Bicyclogermacrene	2.58
51.444	alpha-Murolene	0.09
51.727	(E,E)-alpha-Farnesene	3.47
51.980	beta-Bisabolene	0.18
52.168	3,6-Dihydrochamazulene	0.38
52.332	gamma-Cadinene	0.22
52.620	delta-Cadinene	0.24
52.970	Matricaria ester	1.61
54.905	Unidentified	0.07
55.062	(E)-Nerolidol	0.13
55.243	Unidentified	0.05
55.558	Dendrolasin	0.08
55.725	Unidentified	0.04
56.103	Spathulenol	0.62
56.445	Unidentified	0.03
56.641	Globulol	0.30
57.050	Unidentified	0.05
57.143	Viridiflorol	0.16
57.270	Unidentified	0.02
57.734	Ledol	0.06

Chromatogram Chamomile German CO2 - Edens Garden



Comments:

The analysis of this Chamomile German CO2 batch sample meets the expected chemical profile for authentic essential oil of Matricaria chamomilla.

No contamination or adulteration was detected. The results provided in this GCMS quality analysis reflect the chemical composition of the oil and lot referenced above on the date of analysis.

R.Time	Name	Area%
57.857	Rosifoliol	0.07
58.075	Unidentified	0.04
58.223	Unidentified	0.11
58.365	Unidentified	0.18
58.645	Unidentified	0.04
58.835	Unidentified	0.14
58.994	Unidentified	0.13
59.160	Unidentified	0.22
59.290	Unidentified	0.09
59.584	Unidentified	0.06
59.811	tau-Cadinol	0.49
59.925	epi-alpha-Cadinol	0.05
60.066	Unidentified	0.05
60.528	alpha-Bisabolol oxide B	8.40
60.872	Unidentified	0.38
60.962	Unidentified	0.12
62.016	alpha-Bisabolone oxide A	5.83
62.204	alpha-Bisabolol	2.51
62.487	Unidentified	0.13
64.661	Chamazulene	3.92
65.741	alpha-Bisabolol oxide A	33.59
66.702	Unidentified	0.09
67.931	Unidentified	0.02
68.752	Unidentified	0.03
70.378	Phytone	0.35
72.368	cis-Spiroether	3.75
73.025	trans-Spiroether	0.27
74.579	Methyl hexadecanoate	0.03
75.926	Unidentified	0.13
76.176	Palmitic acid	0.04
83.154	Phytol	0.05
84.604	Unidentified	0.14
91.534	Tricosane	0.27
95.620	Tetracosane	0.06
99.548	Pentacosane	0.76
107.096	Heptacosane	0.11
		100.00