

Sample Information

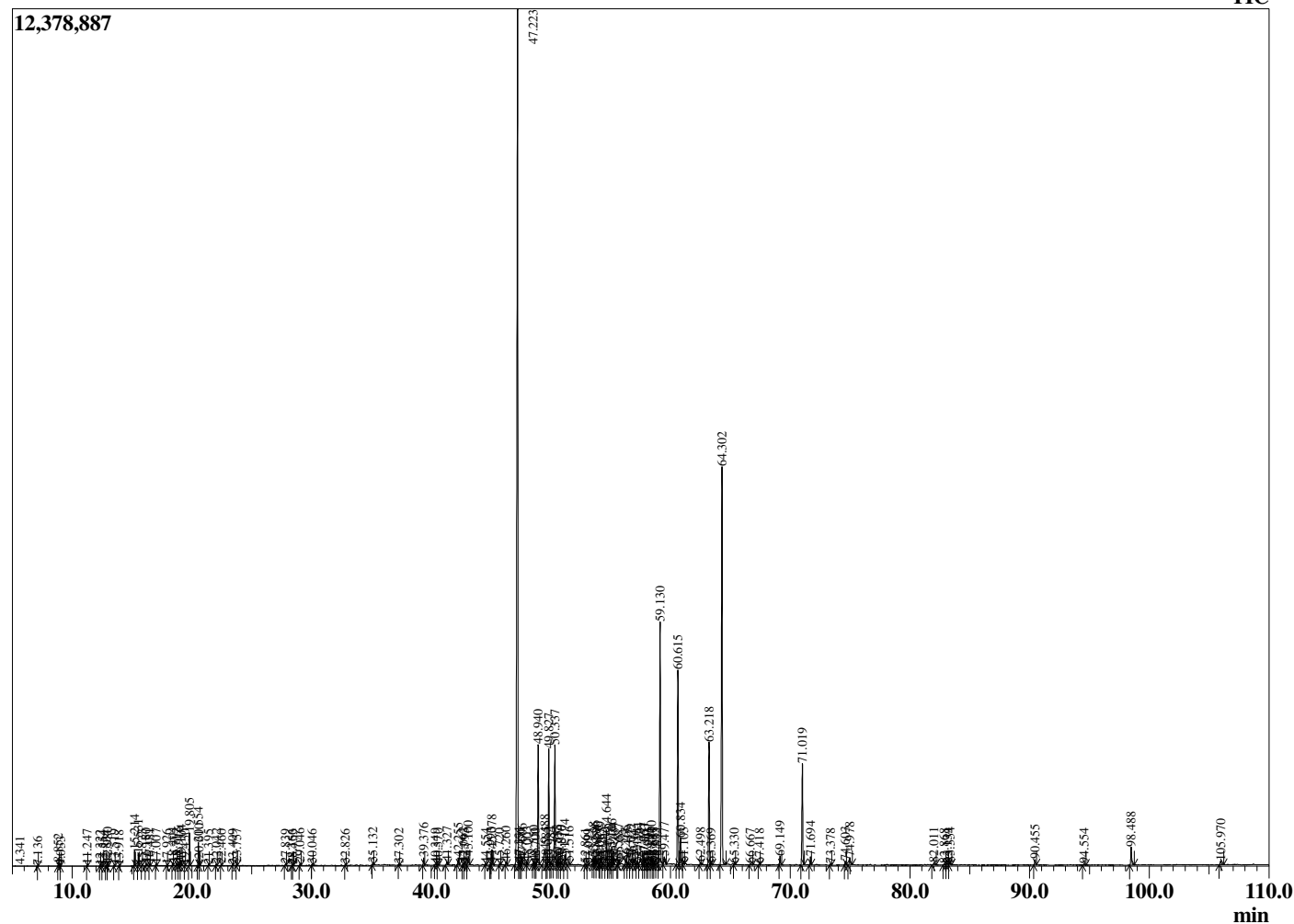
Analyzed by : Dr. Robert S. Pappas
 Analyzed : 10/22/2020 4:05:56 AM
 Sample Type : Essential Oil
 Sample Name : Chamomile Oil Blue-Edens Garden
 Sample ID : BA29IH
 Injection Volume : 0.10
 Instrument ID : GC-3



Peak Report TIC

R.Time	Name	Area%
4.229	3-Methylbutanal	0.01
4.341	2-Methylbutanal	0.01
7.136	Capronaldehyde	0.01
8.852	Ethyl 2-methylbutyrate	0.06
9.033	Ethyl isovalerate	0.00
11.247	Santolinatriene	0.02
12.322	Unidentified	0.01
12.554	alpha-Thujene	0.01
12.834	Unidentified	0.01
12.980	alpha-Pinene	0.07
13.519	Propyl 2-Methylbutyrate	0.03
13.918	Camphene	0.01
15.214	Sabinene	0.36
15.531	beta-Pinene	0.27
15.823	6-Methyl hept-5-en-2-one	0.02
16.180	2-Pentyl furan	0.09
16.481	Yomogi alcohol	0.05
17.007	Octanal	0.03
17.926	alpha-Terpinene	0.02
18.404	para-Cymene	0.08
18.712	Limonene	0.06
18.916	1,8-cineole	0.09
19.104	(Z)-beta-Ocimene	0.13
19.430	Unidentified	0.01
19.805	(E)-beta-Ocimene	0.83
20.554	Artemisia Ketone	0.63
20.610	gamma-Terpinene	0.09
21.395	Octanol	0.01
22.042	Artemisia alcohol	0.04
22.460	Terpinolene	0.03
23.409	Linalool	0.02
23.757	Nonanal	0.06
27.839	beta-Artemisia acetate	0.04
28.366	Pelargol	0.02
28.453	Unidentified	0.01
29.046	Terpinen-4-ol	0.06
30.046	alpha-Terpineol	0.03
32.826	3-Hexenyl isovalerate	0.03
35.132	Unidentified	0.07
37.302	Tridecane	0.03
39.376	delta-Elementene	0.22
40.349	Unidentified	0.05
40.570	Eugenol	0.03
41.327	Decanoic acid	0.13
42.255	alpha-Copaene	0.22
42.662	Modheph-2-ene	0.07
42.793	Unidentified	0.07
43.100	alpha-Isocomene	0.39
44.554	Unidentified	0.05
44.993	beta-Ylangene	0.04
45.078	beta-Caryophyllene	0.51
45.720	beta-Copaene	0.04
46.260	Aromadendrene	0.11
47.223	(E)-beta-Farnesene	34.54
47.331	alpha-Humulene	0.08
47.456	Unidentified	0.06
47.606	Alloaromadendrene	0.24
48.003	Eehydrosesquicineole	0.09
48.550	trans-Cadina-1(6),4-diene	0.11
48.700	gamma-Curcumene	0.03
48.940	Germacrene D	3.97
49.488	(Z,Z)-alpha-Farnesene	0.97

Chromatogram Chamomile Oil Blue-Edens Garden



Comments:

The analysis of this Chamomile, Blue batch sample meets the expected chemical profile for authentic essential oil of *Matricaria chamomilla*. No contamination or adulteration was detected. The results provided in this GCMS quality analysis reflect the chemical composition of the oil and lot referenced above on the date of analysis.

R.Time	Name	Area%
49.585	Unidentified	0.05
49.827	Bicyclgermacrene	3.66
49.984	alpha-Murolene	0.09
50.337	(E,E)-alpha-Farnesene	3.89
50.553	beta-Bisabolene	0.15
50.707	3,6-Dihydroxychamazulene	0.12
50.870	gamma-Cadinene	0.13
51.174	delta-Cadinene	0.33
51.516	Unidentified	0.10
52.861	Unidentified	0.05
53.099	Unidentified	0.04
53.538	Unidentified	0.19
53.696	trans-Nerolidol	0.28
53.854	Unidentified	0.11
54.063	Unidentified	0.01
54.179	Dendaralasin	0.24
54.255	Unidentified	0.05
54.644	Spathulenol	1.15
54.779	Unidentified	0.07
54.974	Caryophyllene oxide	0.12
55.106	Unidentified	0.39
55.174	Globulol	0.16
55.582	Unidentified	0.02
55.687	Viridiflorol	0.21
56.266	Ledol	0.14
56.415	Eudesm-5-en-11-ol	0.08
56.722	Unidentified	0.24
56.943	Unidentified	0.27
57.191	Unidentified	0.06
57.491	Unidentified	0.32
57.757	Unidentified	0.22
57.863	Unidentified	0.21
58.041	Unidentified	0.05
58.205	Unidentified	0.07
58.400	tau-Cadinol	0.31
58.511	epi-alpha-Cadinol	0.06
58.665	Unidentified	0.06
58.833	Unidentified	0.03
59.130	alpha-Bisabolol oxide B	8.26
59.477	Unidentified	0.38
60.615	alpha-Bisabolone oxide A	6.48
60.834	alpha-Bisabolol	0.96
61.103	Unidentified	0.06
62.498	Pentadecanal	0.08
63.218	Chamazulene	4.05
63.369	Unidentified	0.06
64.302	alpha-Bisabolol oxide A	14.36
65.330	Unidentified	0.04
66.667	Unidentified	0.06
67.418	Unidentified	0.04
69.149	Phytone	0.28
71.019	Spiroether isomer	3.47
71.694	Spiroether isomer	0.25
73.378	Methyl palmitate	0.06
74.603	Unidentified	0.12
74.978	Unidentified	0.29
82.011	Unidentified	0.10
82.868	Unidentified	0.06
83.134	Unidentified	0.09
83.354	Unidentified	0.11
90.455	Tricosane	0.19
94.554	Tetracosane	0.06
98.488	Pentacosane	0.69

R.Time	Name
105.970	Heptacosane

Area%
0.19
100.00