

Sample Information

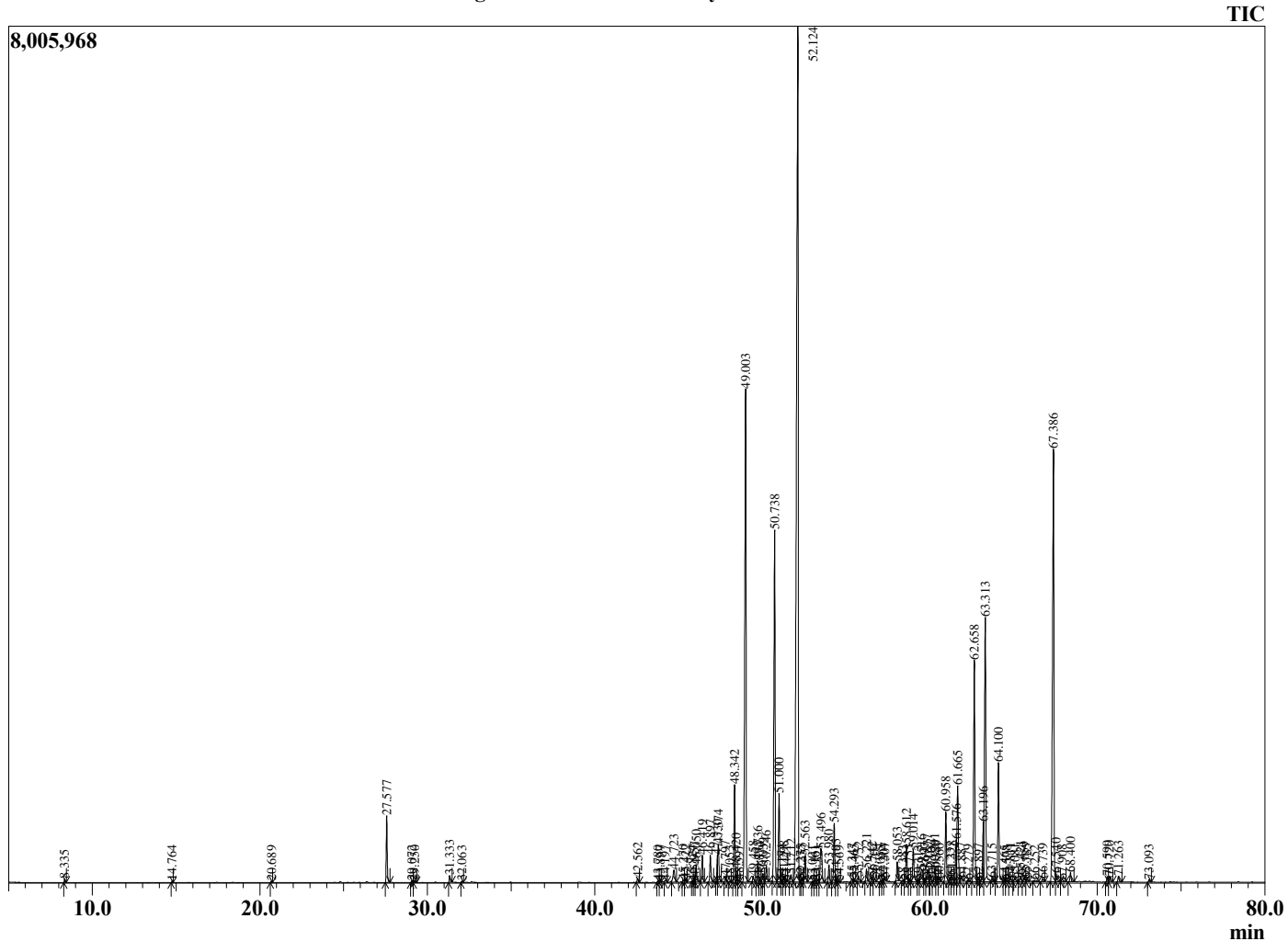
Analyzed by : Dr. Robert S. Pappas
 Analyzed : 4/6/2021 2:25:40 AM
 Sample Type : Essential Oil
 Sample Name : Cedarwood Himalayan - Edens Garden
 Sample ID : BB22AD
 Injection Volume : 0.10
 Instrument ID : GC-2



Peak Report TIC

R.Time	Name	Area%
8.335	Mesityl oxide	0.05
14.764	alpha-Pinene	0.02
20.689	Limonene	0.02
27.577	4-Acetyl-1-methylcyclohexene	1.17
29.072	Unidentified	0.03
29.250	Unidentified	0.04
31.333	4-Methyl acetophenone	0.13
32.063	alpha-Terpineol	0.03
42.562	alpha-Lonipinene	0.09
43.780	alpha-Ylangene	0.03
43.897	Unidentified	0.03
44.197	alpha-Copaene	0.06
44.723	Unidentified	0.40
45.270	Sativene	0.06
45.422	Unidentified	0.07
45.824	Unidentified	0.03
45.957	alpha-Gurjunene	0.09
46.050	Z-Vestitenone	0.36
46.419	Junipene	0.53
46.897	Unidentified	0.57
47.330	Himachalene isomer	0.32
47.374	Unidentified	0.79
47.797	trans-alpha-Bergamotene	0.12
48.053	Aromadendrene	0.02
48.342	E-Vestitenone	1.91
48.420	Unidentified	0.21
48.597	Unidentified	0.04
49.003	alpha-Himachalene	12.03
49.458	Unidentified	0.12
49.736	Unidentified	0.44
49.834	Unidentified	0.10
50.039	Unidentified	0.20
50.246	alpha-Neocallitropsene	0.36
50.738	gamma-Himachalene	7.81
51.000	11-alpha-Himachala-1,4-diene	1.78
51.174	10s,11s-Himachala-3(12),4-diene	0.03
51.298	(Z)-4,10-Epoxy amorphane	0.12
51.421	Unidentified	0.03
51.712	Unidentified	0.17
52.124	beta-Himachalene	27.84
52.275	Unidentified	0.04
52.357	Unidentified	0.07
52.563	alpha-dehydro-ar-Himachalene	0.60
53.001	Unidentified	0.02
53.161	trans-Calamenene	0.03
53.321	Unidentified	0.06
53.496	Unidentified	1.14
53.980	9,10-Cycloisolongifolene	0.36
54.293	trans-alpha-Bisabolene	1.19
54.395	alpha-Calcorene	0.13
54.569	Unidentified	0.02
55.347	Unidentified	0.08
55.465	(E)-Nerolidol	0.07
55.752	beta-Vetivenene	0.11
56.221	Himachalene epoxide	0.24
56.542	Unidentified	0.10
56.704	Unidentified	0.08
57.055	Unidentified	0.02
57.204	Unidentified	0.04
57.307	Unidentified	0.06
58.053	Longiborneol	0.37
58.383	Unidentified	0.03

Chromatogram Cedarwood Himalayan - Edens Garden



Comments:

The analysis of this Cedarwood, Himalayan batch sample meets the expected chemical profile for authentic essential oil of *Cedrus deodara*. No contamination or adulteration was detected. The results provided in this GCMS quality analysis reflect the chemical composition of the oil and lot referenced above on the date of analysis.

R.Time	Name	Area%
58.612	Unidentified	0.83
58.755	Unidentified	0.04
59.014	beta-Himachalene oxide	0.77
59.313	Unidentified	0.03
59.516	Unidentified	0.48
59.697	Unidentified	0.08
59.877	Unidentified	0.34
60.032	Unidentified	0.16
60.291	Unidentified	0.28
60.380	Unidentified	0.15
60.560	Unidentified	0.07
60.958	beta-Himachalol	1.49
61.237	Unidentified	0.10
61.328	Ar-tumerone	0.13
61.576	Unidentified	0.73
61.665	Unidentified	2.38
61.887	Unidentified	0.14
62.279	Unidentified	0.05
62.658	allo-Himachalol	4.97
62.897	Unidentified	0.08
63.196	Deodarone isomer	1.08
63.313	Deodarone isomer	6.84
63.715	Unidentified	0.05
64.100	(Z)-alpha-Atlantone	2.55
64.465	Unidentified	0.03
64.578	Unidentified	0.04
64.811	Unidentified	0.08
65.081	Unidentified	0.09
65.421	Valerenal	0.15
65.659	Unidentified	0.11
65.785	Unidentified	0.07
66.252	Unidentified	0.07
66.739	13-Hydroxy valencene	0.07
67.386	(E)-alpha-Atlantone	11.43
67.540	Unidentified	0.21
67.908	Unidentified	0.07
68.400	Unidentified	0.20
70.599	Unidentified	0.12
70.720	Unidentified	0.14
71.263	Unidentified	0.13
73.093	Unidentified	0.05
		100.00