

Sample Information

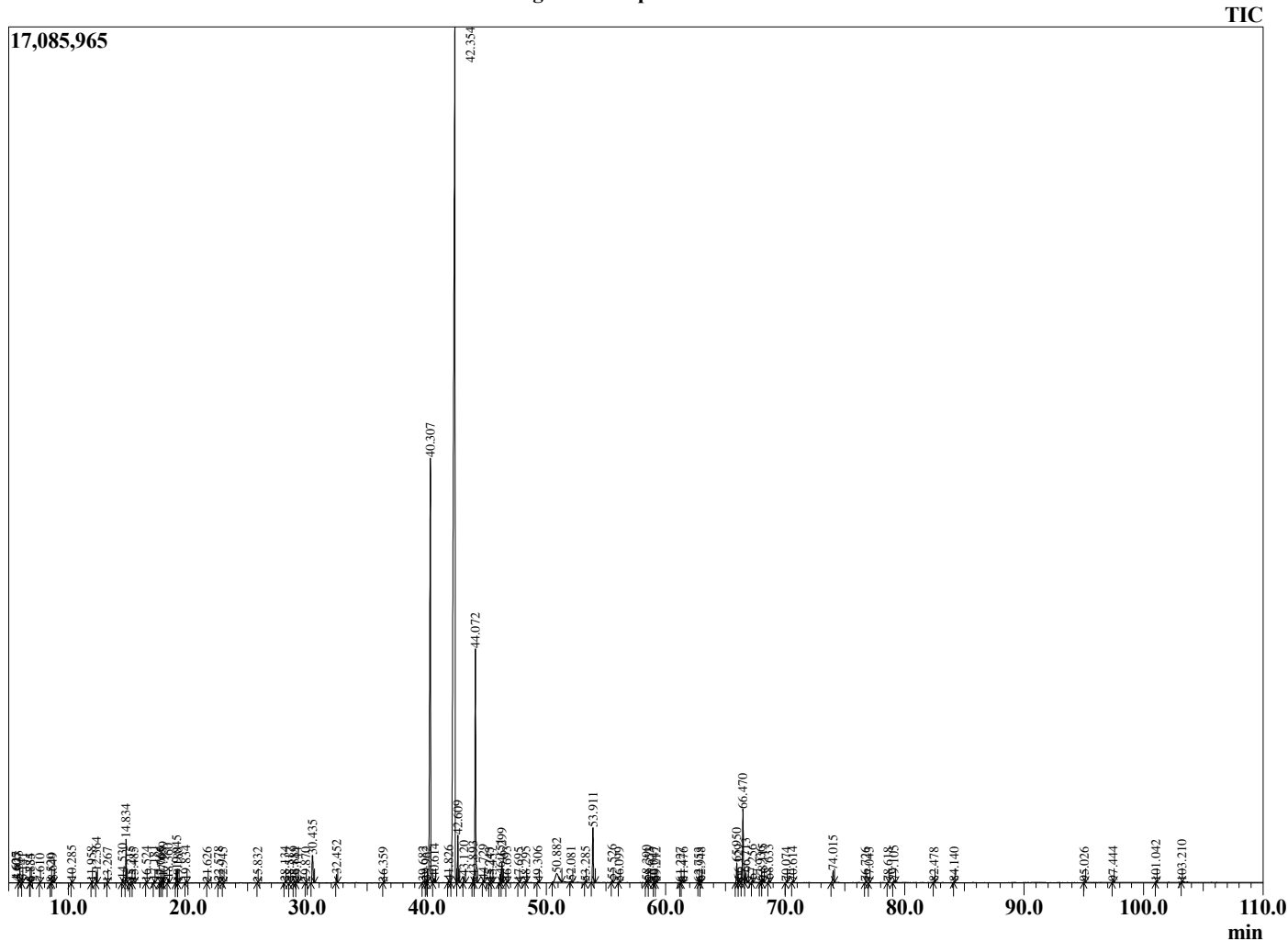
Analyzed by : Dr. Robert S. Pappas  
 Analyzed : 5/27/2021 10:18:59 PM  
 Sample Type : Essential Oil  
 Sample Name : Catnip Oil - Edens Garden  
 Sample ID : BB13GK  
 Injection Volume : 0.10  
 Instrument ID : GC-4



Peak Report TIC

R.Time	Name	Area%
4.085	3-Methylbutanal	0.02
4.189	2-Methylbutanal	0.02
4.605	Unidentified	0.01
4.627	2-Ethylfuran	0.03
5.833	Unidentified	0.06
6.141	Methyl 2-methylbutyrate	0.02
6.784	Octane	0.00
6.835	Hexanal	0.01
7.610	1,3,6-Octatriene	0.01
8.520	3-Methylcyclopentanone	0.01
8.649	Hex-(2E)-enal	0.05
10.285	Styrene	0.04
11.958	alpha-Thujene	0.02
12.364	alpha-Pinene	0.24
13.267	Camphene	0.01
14.530	Sabinene	0.09
14.834	beta-Pinene	1.05
15.215	3-Octanone	0.04
15.485	Unidentified	0.02
16.524	alpha-Phellandrene	0.02
17.181	alpha-Terpinene	0.05
17.666	para-Cymene	0.03
17.765	1-Acetylcyclohexene	0.02
17.959	Limonene	0.14
18.360	(Z)-beta-Ocimene	0.10
19.045	(E)-beta-Ocimene	0.33
19.188	Unidentified	0.02
19.834	gamma-Terpinene	0.06
21.626	Terpinolene	0.01
22.578	Linalool	0.04
22.945	Nonanal	0.01
25.832	Camphor	0.01
28.134	Terpinen-4-ol	0.03
28.517	(E)-Anethofuran	0.02
28.889	Methyl salicylate	0.05
29.144	alpha-Terpineol	0.03
29.870	Unidentified	0.01
30.435	Unidentified	1.30
32.452	Carvone	0.24
36.359	Tridecane	0.01
39.682	Unidentified	0.03
39.962	Nepetalactone isomer	0.04
40.307	4a-alpha,7-alpha,7a-alpha-Nepetalactone	17.64
40.614	Nepetalactone isomer	0.15
41.826	Hex-(3Z)-enoate	0.06
42.354	4a-alpha,7-beta,7a-alpha-Nepetalactone	58.01
42.609	Nepetalactone isomer	1.43
43.120	cis-beta-Caryophyllene	0.20
43.893	Unidentified	0.21
44.072	trans-beta-Caryophyllene	8.02
44.729	Unidentified	0.09
45.243	trans,cis-Iridolactone	0.01
45.457	Unidentified	0.01
46.151	(E)-beta-Farnesene	0.28
46.299	alpha-Humulene	0.67
46.693	Unidentified	0.04
47.695	(E)-beta-Ionone	0.01
48.295	Unidentified	0.03
49.306	Unidentified	0.04
50.882	Nepetic acid	1.36
52.081	Unidentified	0.05
53.285	(3Z)-3-Hexenyl butyrate	0.02

Chromatogram Catnip Oil - Edens Garden



Comments:

The analysis of this Catnip batch sample meets the expected chemical profile for authentic essential oil of *Nepeta cataria*. No contamination or adulteration was detected. The results provided in this GCMS quality analysis reflect the chemical composition of the oil and lot referenced above on the date of analysis.

R.Time	Name	Area%
53.911	Caryophyllene oxide	1.93
55.526	Humulene epoxide II	0.09
56.099	Unidentified	0.02
58.390	Unidentified	0.08
58.653	Unidentified	0.01
59.047	Unidentified	0.03
59.212	Unidentified	0.01
61.227	Unidentified	0.01
61.476	Unidentified	0.02
62.753	Unidentified	0.01
62.948	Unidentified	0.02
65.950	Unidentified	0.69
66.129	Unidentified	0.13
66.470	Nepetalic acid	2.75
66.713	Unidentified	0.37
67.256	Unidentified	0.08
67.936	Unidentified	0.04
68.115	Phytone	0.14
68.633	Unidentified	0.10
70.074	Unidentified	0.02
70.614	Unidentified	0.03
74.015	Unidentified	0.48
76.726	Unidentified	0.02
77.043	Unidentified	0.01
78.618	Unidentified	0.02
79.105	Unidentified	0.09
82.478	Unidentified	0.02
84.140	Unidentified	0.01
95.026	Unidentified	0.01
97.444	Unidentified	0.03
101.042	Unidentified	0.01
103.210	Unidentified	0.01
		100.00