

Sample Information

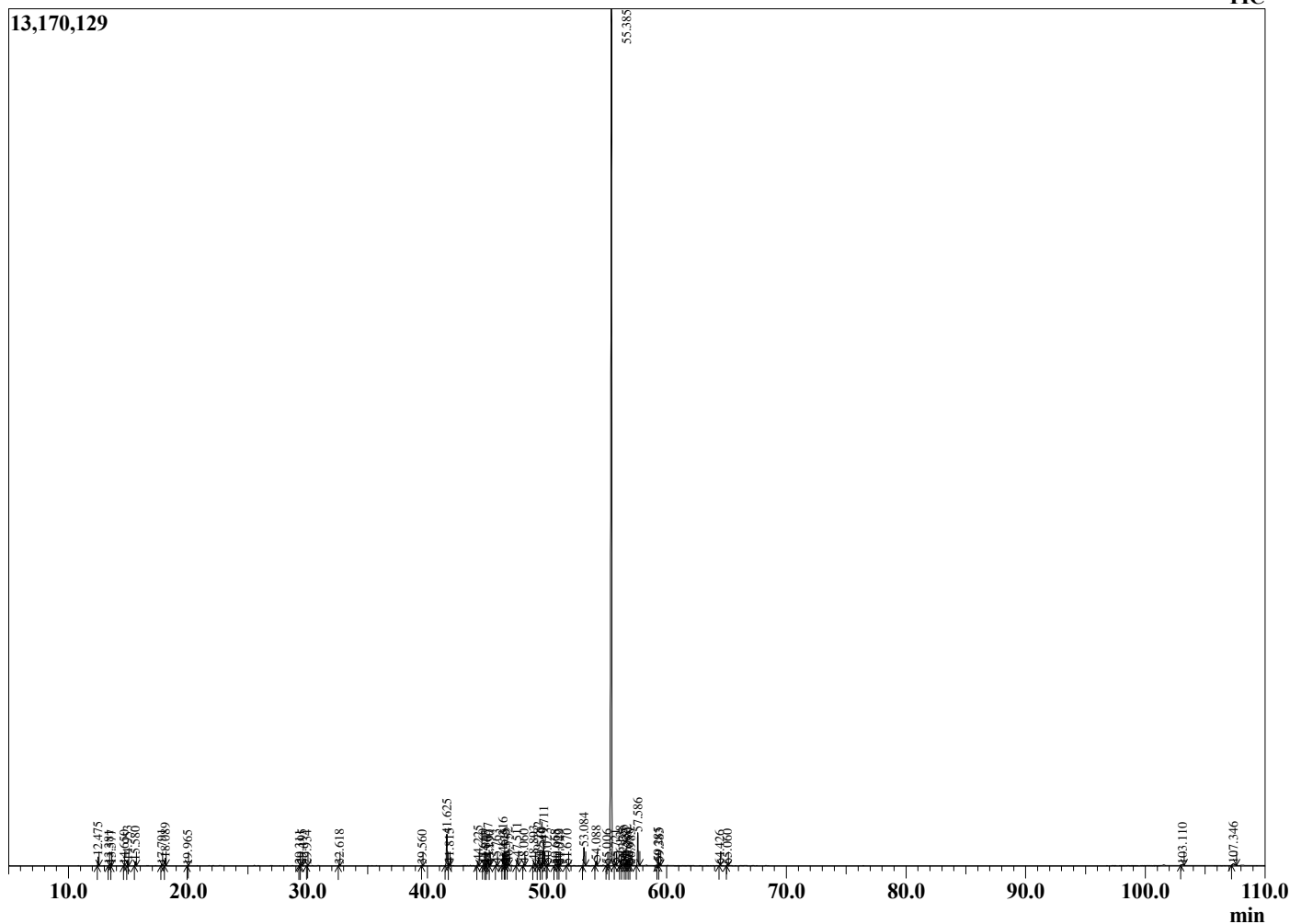
Analyzed by : Dr. Robert S. Pappas
 Analyzed : 11/21/2020 4:18:22 AM
 Sample Type : Essential Oil
 Sample Name : Carrot Seed Oil-Edens Garden
 Sample ID : BA29IE
 Injection Volume : 0.10
 Instrument ID : GC-4



Peak Report TIC

R.Time	Name	Area%
12.475	alpha-Pinene	0.46
13.381	Camphene	0.03
13.577	Thuja-2,4(10)diene	0.02
14.650	Sabinene	0.02
14.953	beta-Pinene	0.27
15.580	Myrcene	0.26
17.791	para-Cymene	0.07
18.089	Limonene	0.46
19.965	gamma-Terpinene	0.02
29.311	Myrtenal	0.05
29.495	cis-Dihydrocarvone	0.06
29.934	trans-Dihydrocarvone	0.03
32.618	Carvone	0.07
39.560	Unidentified	0.02
41.625	Daucene	2.78
41.815	Unidentified	0.14
44.225	trans-beta-Caryophyllene	0.35
44.660	Unidentified	0.05
44.843	Unidentified	0.02
45.077	trans-alpha-Bergamotene	0.62
45.190	Unidentified	0.03
45.763	epi-beta-Santalene	0.09
46.316	trans-beta-Farnesene	0.91
46.475	Unidentified	0.05
46.549	Unidentified	0.09
46.752	beta-Copaene	0.22
47.511	Dauca-5,8-diene	0.66
48.060	Ar-Curcumene	0.10
48.893	trans-Methyl isoeugenol	0.39
49.282	Isodaucene	0.69
49.510	Unidentified	0.23
49.711	beta-Bisabolene	1.89
50.023	Unidentified	0.12
50.668	beta-Sesquiphellandrene	0.10
50.922	Dauca-4(11),8-diene	0.07
51.049	trans-calamenene	0.06
51.670	Unidentified	0.06
53.084	Unidentified	1.63
54.088	Caryophyllene oxide	0.38
55.006	Unidentified	0.04
55.385	Carotol	81.31
55.721	Unidentified	0.12
56.138	Apiol	0.39
56.335	Unidentified	0.06
56.533	Unidentified	0.22
56.682	Unidentified	0.44
56.850	Unidentified	0.12
56.985	Unidentified	0.06
57.586	Daucol	2.60
59.285	Unidentified	0.28
59.383	Unidentified	0.19
64.426	Unidentified	0.03
65.060	Unidentified	0.08
103.110	Unidentified	0.14
107.346	Unidentified	0.33
		100.00

Chromatogram Carrot Seed Oil-Edens Garden



Comments:

The analysis of this Carrot Seed batch sample meets the expected chemical profile for authentic essential oil of *Daucus carota*. No contamination or adulteration was detected. The results provided in this GCMS quality analysis reflect the chemical composition of the oil and lot referenced above on the date of analysis.