

Sample Information

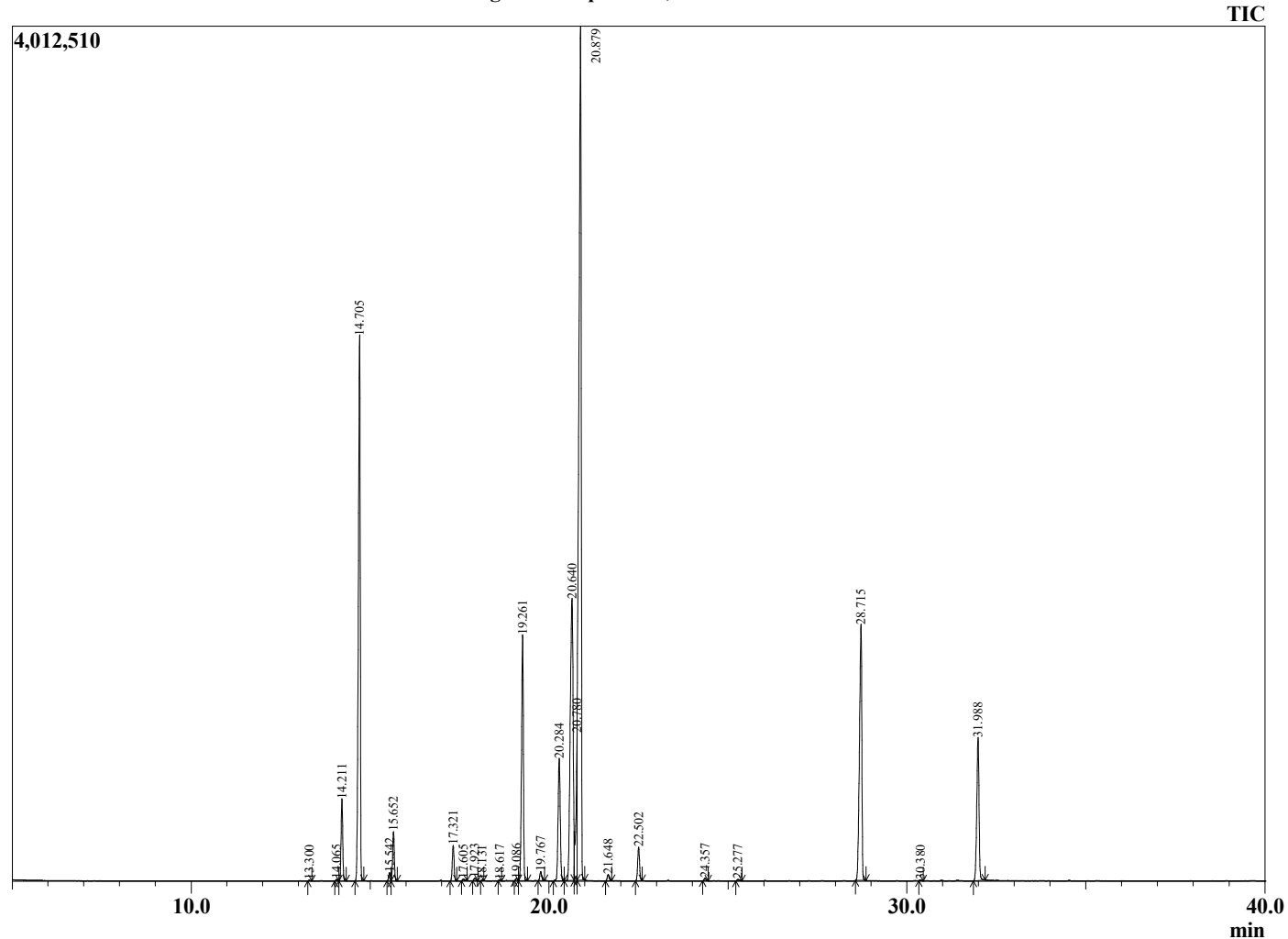
Analyzed by : Dr. Robert S. Pappas  
 Analyzed : 5/28/2021 8:28:58 PM  
 Sample Type : Essential Oil  
 Sample Name : Camphor Oil, White - Edens Garden  
 Sample ID : BB01G  
 Injection Volume : 0.10  
 Instrument ID : GC-2



Peak Report TIC

R.Time	Name	Area%
13.300	2,6-Dimethyl 4-octene	0.02
14.065	Tricyclene	0.04
14.211	alpha-Thujene	2.18
14.705	alpha-Pinene	16.47
15.542	alpha-Fenchene	0.23
15.652	Camphene	1.36
17.321	beta-Pinene	1.02
17.605	6-Methyl hept-5-en-2-one	0.05
17.923	Myrcene	0.08
18.131	Sulcatol	0.02
18.617	alpha-Terpinene	0.02
19.086	alpha-Phellandrene	0.06
19.261	delta-3-Carene	7.52
19.767	alpha-Terpinene	0.28
20.284	para-Cymene	4.29
20.640	Limonene	13.18
20.780	beta-Phellandrene	2.65
20.879	1,8-Cineole	34.15
21.648	trans-beta-Ocimene	0.19
22.502	gamma-Terpinene	1.01
24.357	Terpinolene	0.08
25.277	Linalool	0.07
28.715	Camphor	9.77
30.380	Borneol	0.02
31.988	alpha-Terpineol	5.25
		100.00

Chromatogram Camphor Oil, White - Edens Garden



Comments:

The analysis of this Camphor Oil, White batch sample meets the expected chemical profile for authentic essential oil of *Cinnamomum camphora*. No contamination or adulteration was detected. The results provided in this GCMS quality analysis reflect the chemical composition of the oil and lot referenced above on the date of analysis.