

Sample Information

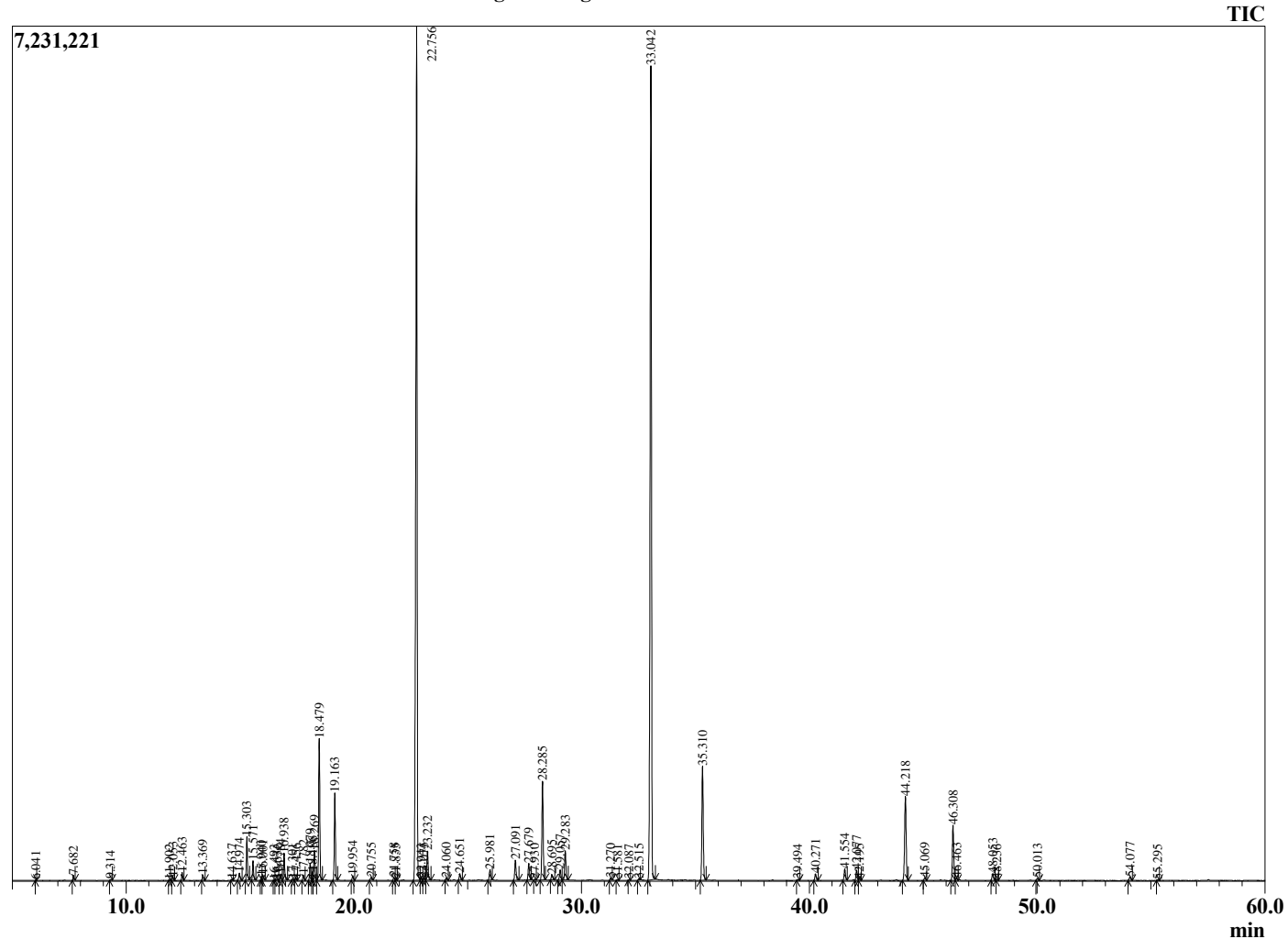
Analyzed by : Dr. Robert S. Pappas
 Analyzed : 11/21/2020 8:09:52 AM
 Sample Type : Essential Oil
 Sample Name : Bulgarian Lavender-Eden's Garden
 Sample ID : BA29IAB
 Injection Volume : 0.10
 Instrument ID : GC-2



Peak Report TIC

R.Time	Name	Area%
3.682	Unidentified	0.01
4.113	3-Methylbutanal	0.01
6.041	Toluene	0.01
7.682	Hexyl methyl ether	0.12
9.314	n-Hexanol	0.03
11.902	Tricyclene	0.02
12.053	alpha-Thujene	0.10
12.463	alpha-Pinene	0.21
13.369	Camphene	0.17
14.637	Sabinene	0.03
14.974	1-Octen-3-ol	0.27
15.303	3-Octanone	1.29
15.571	Myrcene	0.59
15.940	Butyl butyrate	0.10
16.001	3-Octanol	0.19
16.493	Unidentified	0.02
16.636	alpha-Phellandrene	0.05
16.784	delta-3-Carene	0.19
16.938	Hexyl acetate	0.85
17.301	alpha-Terpinene	0.04
17.456	meta-Cymene	0.05
17.782	para-Cymene	0.18
18.079	Limonene	0.53
18.186	beta-Phellandrene	0.26
18.269	1,8-Cineole	0.97
18.479	(Z)-beta-Ocimene	4.53
19.163	(E)-beta-Ocimene	2.71
19.954	gamma-Terpinene	0.15
20.755	cis-Linalool oxide (furanoid)	0.11
21.758	Terpinolene	0.10
21.835	trans-Linalool oxide (furanoid)	0.04
22.756	Linalool	32.81
22.943	Hotrienol	0.08
23.075	Hexyl propionate	0.09
23.232	1-Octen-3-yl acetate	1.02
24.060	3-Octyl acetate	0.08
24.651	allo-Ocimene	0.22
25.981	Hexyl isobutyrate	0.43
27.091	Lavandulol	0.75
27.679	Borneol	0.60
27.930	Unidentified	0.02
28.285	Terpinen-4-ol	3.65
28.695	Cryptone	0.20
29.057	Hexyl butyrate	0.39
29.283	alpha-Terpineol	1.09
31.270	Nerol	0.06
31.581	Unidentified	0.03
32.087	Hexyl 2-methylbutyrate	0.02
32.515	Cuminal	0.06
33.042	Linalyl acetate	32.58
35.310	Lavandulyl acetate	4.34
39.494	alpha-Terpinyl acetate	0.03
40.271	Neryl acetate	0.25
41.554	Geranyl acetate	0.44
42.077	Hexyl hexanoate	0.40
42.195	7-epi-Sesquithujene	0.05
44.218	trans-beta-Caryophyllene	3.60
45.069	trans-alpha-Bergamotene	0.10
46.308	(E)-beta-Farnesene	2.10
46.463	alpha-Humulene	0.09
48.053	Germacrene D	0.26
48.236	(E,E)-alpha-Farnesene	0.02

Chromatogram Bulgarian Lavender-Eden's Garden



Comments:

The analysis of this Lavender batch sample meets the expected chemical profile for authentic essential oil of *Lavandula angustifolia*. No contamination or adulteration was detected. The results provided in this GCMS quality analysis reflect the chemical composition of the oil and lot referenced above on the date of analysis.

R.Time	Name	Area%
50.013	gamma-Cadinene	0.07
54.077	Caryophyllene oxide	0.15
55.295	Unidentified	0.02
		100.00