

Sample Information

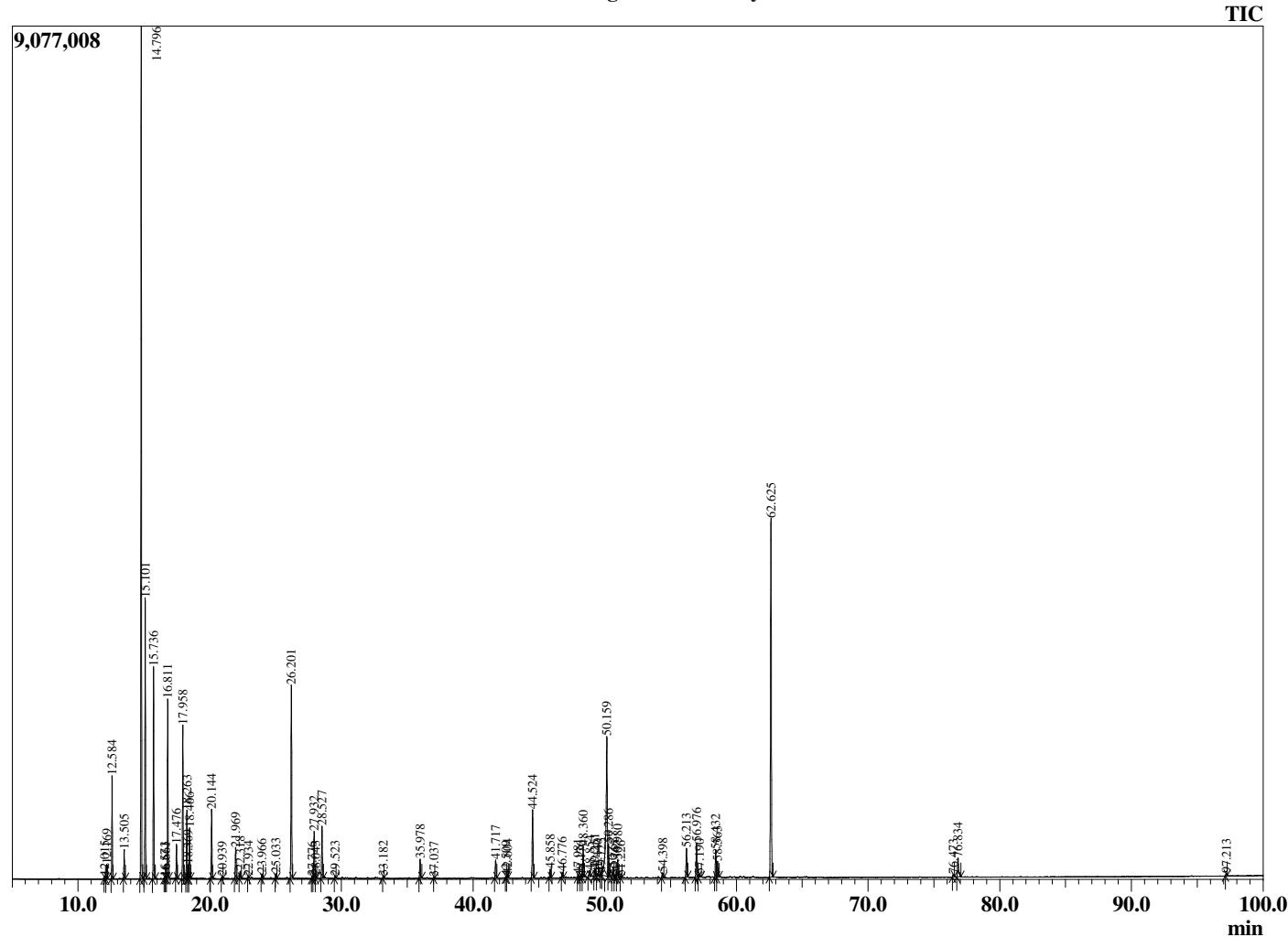
Analyzed by : Dr. Robert S. Pappas
 Analyzed : 5/18/2018 1:10:04 PM
 Sample Type : Essential Oil
 Sample Name : Blue Tansy - Edens Garden
 Sample ID : AH03EA
 Injection Volume : 0.10
 Instrument ID : GC-3



Peak Report TIC

R.Time	Name	Area%
12.015	Tricyclene	0.06
12.169	alpha-Thujene	0.34
12.584	alpha-Pinene	2.50
13.505	Camphene	0.71
14.796	Sabinene	21.70
15.101	beta-Pinene	7.28
15.736	Myrcene	5.60
16.573	Octanal	0.03
16.661	Pseudolimonene	0.04
16.811	alpha-Phellandrene	4.80
17.476	alpha-Terpinene	0.93
17.958	para-Cymene	4.20
18.263	Limonene	1.91
18.369	beta-Phellandrene	0.37
18.466	1,8-Cineole	1.45
20.144	gamma-Terpinene	1.96
20.939	trans-Sabinene hydrate	0.06
21.969	Terpinolene	0.93
22.318	6,7-Epoxymyrcene	0.24
22.934	Linalool	0.06
23.966	Hotrienol	0.13
25.033	4-Acetyl-1-methylcyclohexene	0.14
26.201	Camphor	6.08
27.776	Carvenone	0.05
27.932	Borneol	1.51
28.043	Unidentified	0.07
28.527	Terpinen-4-ol	1.69
29.523	alpha-Terpineol	0.07
33.182	Unidentified	0.06
35.978	Thymol	0.61
37.037	Unidentified	0.02
41.717	alpha-Copaene	0.64
42.509	beta-Cubebene	0.05
42.604	beta-Elemene	0.10
44.524	beta-Caryophyllene	2.43
45.858	cis-beta-Farnesene	0.31
46.776	alpha-Humulene	0.19
47.981	trans-Cadina-1(6),4-diene	0.11
48.176	Unidentified	0.05
48.360	Germacrene D	1.09
48.854	beta-Selinene	0.26
49.251	Bicyclogermacrene	0.30
49.440	alpha-Murolene	0.08
49.725	Unidentified	0.10
50.159	3,6-Dihydrochamazulene	8.25
50.286	Dihydrochamazulene isomer	1.16
50.627	delta-Cadinene	0.38
50.765	Dihydrochamazulene isomer	0.09
50.980	beta-Sesquiphellandrene	0.65
51.226	Dihydrochamazulene isomer	0.05
54.398	Caryophyllene oxide	0.18
56.213	5,6-Dihydrochamazulene	1.05
56.976	7,12-Dehydro-5,6,7,8-tetrahydrochamazulene	1.27
57.190	Eremoligenol isomer	0.14
58.432	7,12-Dehydro-5,6,7,8-tetrahydrochamazulene	1.03
58.563	alpha-Eudesmol	0.67
62.625	Chamazulene	12.74
76.473	Unidentified	0.08
76.834	Unidentified	0.88
97.213	Unidentified	0.07
		100.00

Chromatogram Blue Tansy



Comments:

The analysis of this Blue Tansy batch sample meets the expected chemical profile for authentic essential oil of *Tanacetum annuum*. No contamination or adulteration was detected.