

Sample Information

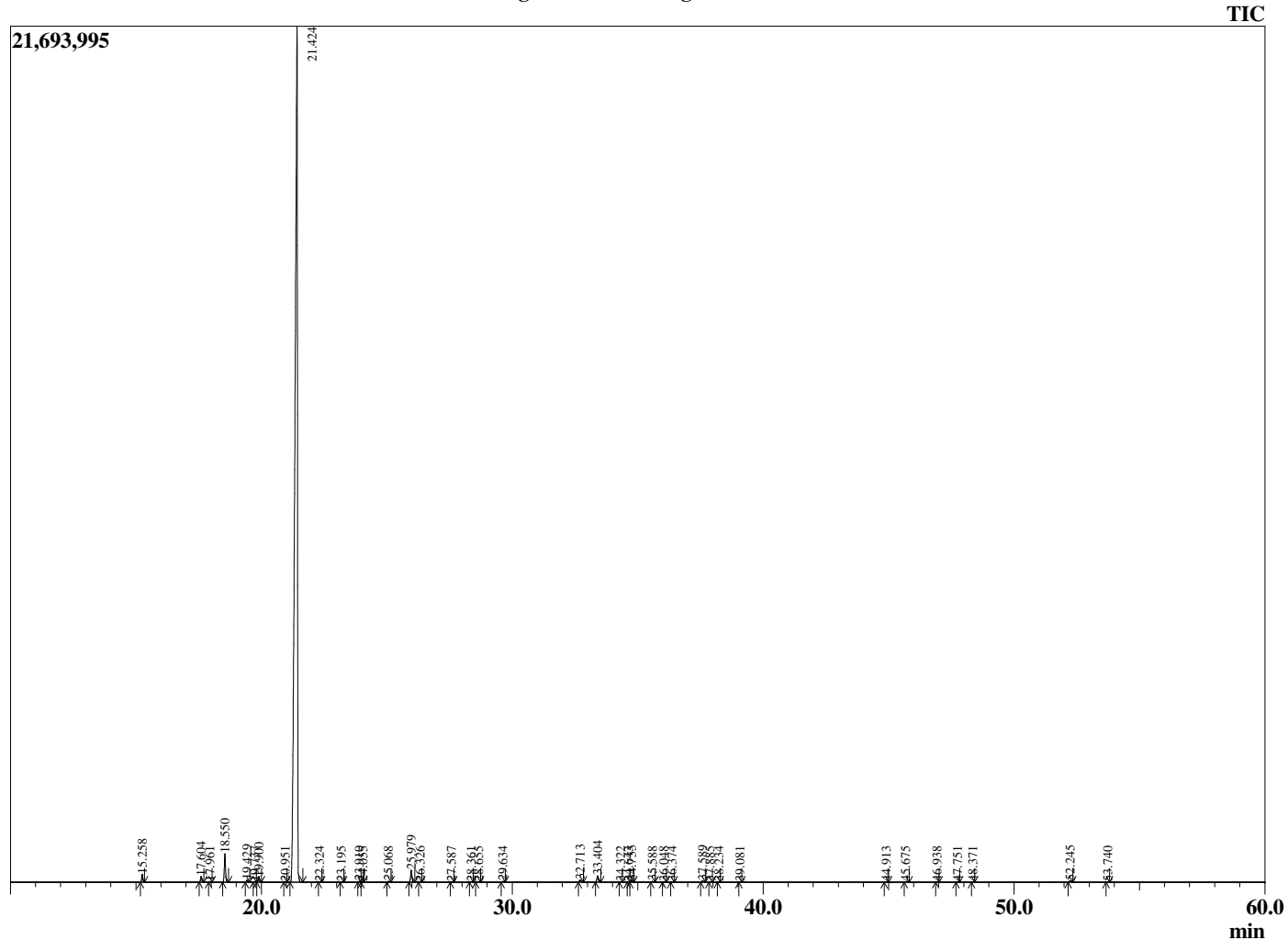
Analyzed by : Dr. Robert S. Pappas
 Analyzed : 5/29/2019 10:23:27 PM
 Sample Type : Essential Oil
 Sample Name : Blood Orange - Edens Garden
 Sample ID : AI28EB
 Injection Volume : 0.10
 Instrument ID : GC-2



Peak Report TIC

R.Time	Name	Area%
15.258	alpha-Pinene	0.41
17.604	Sabinene	0.30
17.961	beta-Pinene	0.03
18.550	Myrcene	1.54
19.429	Octanal	0.12
19.737	alpha-Phellandrene	0.03
19.900	delta-3-Carene	0.26
20.951	para-Cymene	0.01
21.424	Limonene	95.07
22.324	trans-beta-Ocimene	0.01
23.195	gamma-Terpinene	0.02
23.910	Octanol	0.06
24.055	Unidentified	0.02
25.068	Terpinolene	0.05
25.979	Linalool	0.71
26.326	Nonanal	0.03
27.587	trans-para-Mentha-2,8-dienol	0.02
28.361	cis-Limonene oxide	0.04
28.655	trans-Limonene oxide	0.05
29.634	Citronellal	0.05
32.713	alpha-Terpineol	0.14
33.404	Decanal	0.40
34.322	trans-Carveol	0.02
34.643	Nerol	0.02
34.755	Citronellol	0.08
35.588	Neral	0.05
36.048	Carvone	0.03
36.374	Geraniol	0.02
37.589	Geranial	0.09
37.885	n-Decanol	0.02
38.234	Perillaldehyde	0.02
39.081	Thymol	0.01
44.913	alpha-Copaene	0.04
45.675	beta-Cubebene	0.03
46.938	Dodecanal	0.02
47.751	beta-Caryophyllene	0.03
48.371	beta-Copaene	0.03
52.245	Valencene	0.11
53.740	delta-Cadinene	0.03
		100.00

Chromatogram Blood Orange - Edens Garden



Comments:

The analysis of this Blood Orange batch sample meets the expected chemical profile for authentic essential oil of *Citrus sinensis*. No contamination or adulteration was detected.