

Sample Information

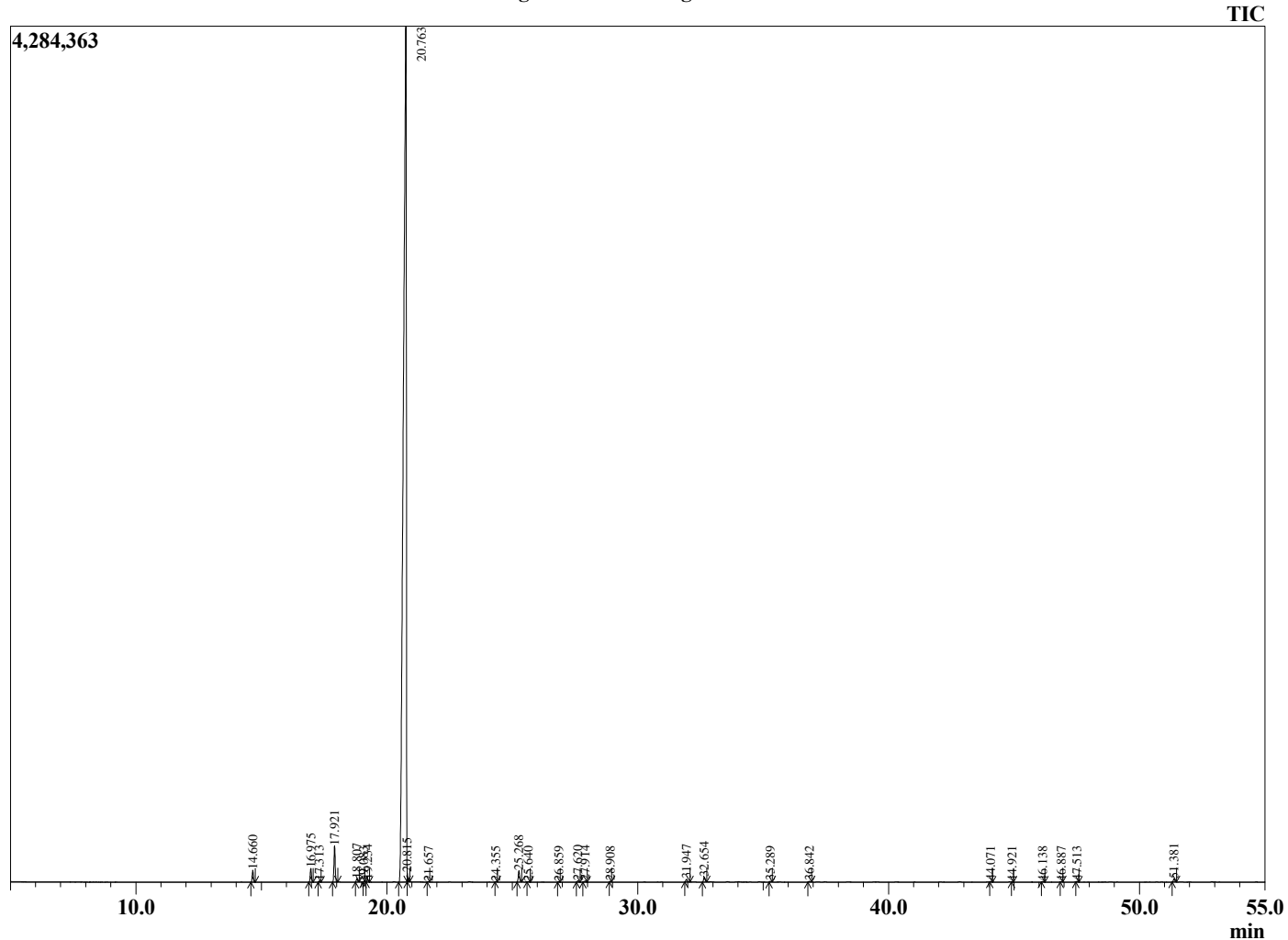
Analyzed by : Dr. Robert S. Pappas  
 Analyzed : 5/26/2021 10:25:59 PM  
 Sample Type : Essential Oil  
 Sample Name : Blood Orange - Edens Garden  
 Sample ID : BB01GF  
 Injection Volume : 0.10  
 Instrument ID : GC-2



Peak Report TIC

R.Time	Name	Area%
14.660	alpha-Pinene	0.52
16.975	Sabinene	0.63
17.313	beta-Pinene	0.05
17.921	Myrcene	1.68
18.807	Octanal	0.16
19.083	alpha-Phellandrene	0.01
19.234	delta-3-Carene	0.12
20.763	Limonene	94.98
20.815	beta-Phellandrene	0.21
21.657	(E)-beta-Ocimene	0.02
24.355	Terpinolene	0.02
25.268	Linalool	0.58
25.640	Nonanal	0.03
26.859	cis-para-Mentha-2,8-dienol	0.02
27.620	cis-Limonene oxide	0.07
27.914	trans-Limonene oxide	0.07
28.908	Citronellal	0.02
31.947	alpha-Terpineol	0.16
32.654	Decanal	0.26
35.289	Carvone	0.04
36.842	Geranial	0.04
44.071	alpha-Copaene	0.02
44.921	beta-Elemene	0.01
46.138	Dodecanal	0.03
46.887	trans-beta-Caryophyllene	0.02
47.513	beta-Copaene	0.04
51.381	Valencene	0.17
		100.00

Chromatogram Blood Orange - Edens Garden



Comments:

The analysis of this Blood Orange batch sample meets the expected chemical profile for authentic essential oil of *Citrus sinensis*. No contamination or adulteration was detected. The results provided in this GCMS quality analysis reflect the chemical composition of the oil and lot referenced above on the date of analysis.