

Sample Information

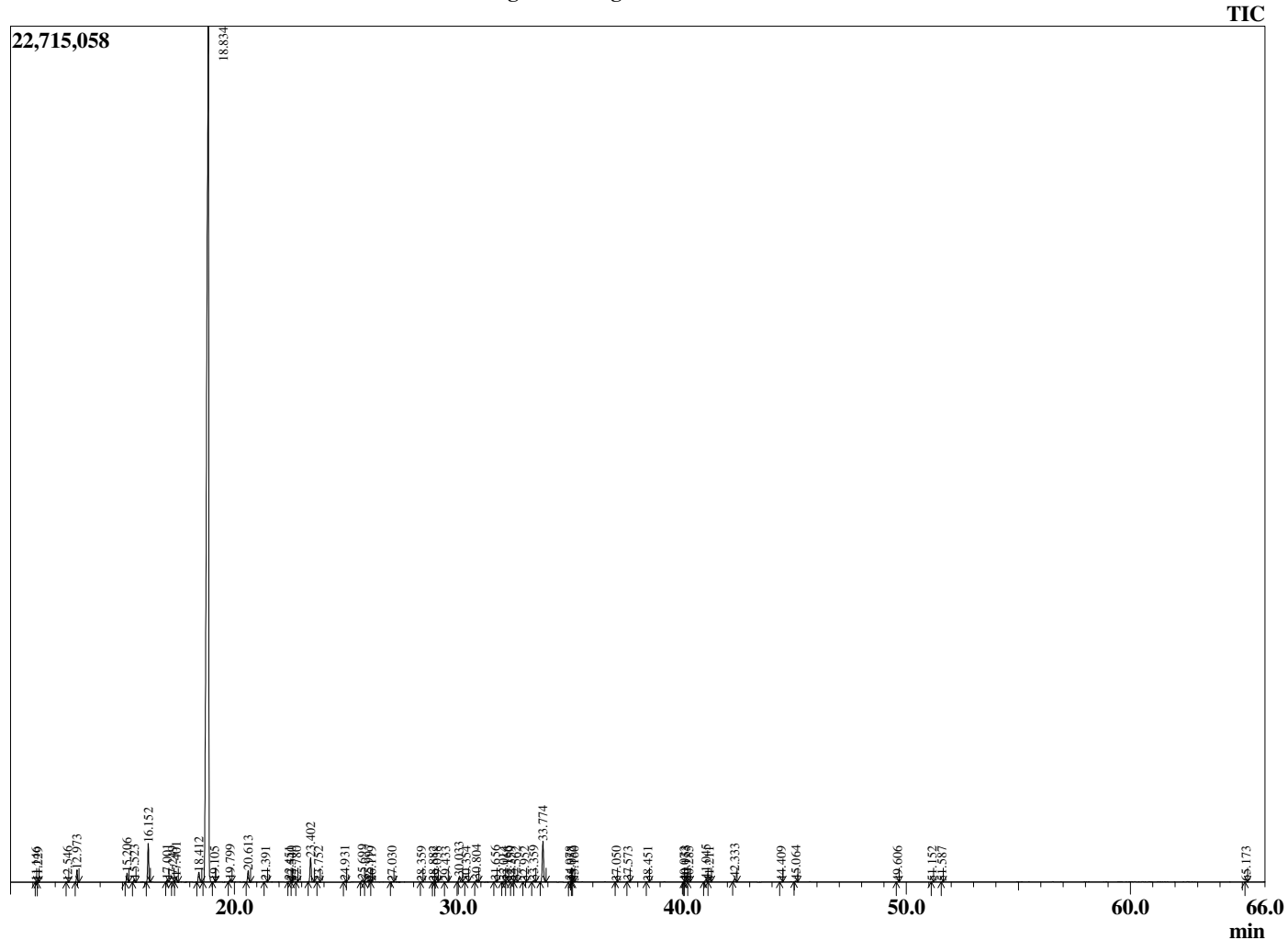
Analyzed by : Dr. Robert S. Pappas
 Analyzed : 10/16/2020 11:27:46 PM
 Sample Type : Essential Oil
 Sample Name : Orange Oil Bitter-Edens Garden
 Sample ID : BA29IB
 Injection Volume : 0.10
 Instrument ID : GC-3



Peak Report TIC

R.Time	Name	Area%
4.799	Heptane	0.00
11.146	Nonane	0.00
11.229	Heptanal	0.00
12.546	alpha-Thujene	0.03
12.973	alpha-Pinene	0.62
15.206	Sabinene	0.47
15.523	beta-Pinene	0.13
16.152	Myrcene	2.02
17.001	Octanal	0.12
17.249	alpha-Phellandrene	0.02
17.401	delta-3-Carene	0.27
18.412	para-Cymene	0.65
18.834	Limonene	88.58
19.105	(Z)-beta-Ocimene	0.04
19.799	(E)-beta-Ocimene	0.13
20.613	gamma-Terpinene	0.65
21.391	1-Octanol	0.05
22.451	Terpinolene	0.05
22.540	Unidentified	0.00
22.780	Unidentified	0.01
23.402	Linalool	1.46
23.752	Nonanal	0.03
24.931	trans-para-Mentha-2,8-dien-1-ol	0.06
25.699	cis-Limonene oxide	0.13
25.997	trans-Limonene oxide	0.17
26.119	Unidentified	0.00
27.030	Citronellal	0.02
28.359	Nonanol	0.02
28.882	Unidentified	0.02
29.038	Terpinen-4-ol	0.01
29.433	Unidentified	0.02
30.033	alpha-Terpineol	0.33
30.354	Unidentified	0.04
30.804	Capraldehyde	0.14
31.656	trans-Carveol	0.07
32.014	Nerol	0.06
32.166	Unidentified	0.02
32.359	Unidentified	0.00
32.562	cis-Carveol	0.05
32.952	Neral	0.03
33.359	Carvone	0.09
33.774	Linalyl acetate	2.69
34.978	Geranial	0.06
35.052	Unidentified	0.01
35.160	Unidentified	0.01
37.050	Unidentified	0.01
37.573	Unidentified	0.03
38.451	Unidentified	0.02
40.073	Unidentified	0.00
40.153	Unidentified	0.05
40.285	Unidentified	0.01
41.045	Neryl acetate	0.16
41.211	Unidentified	0.01
42.333	Geranyl acetate	0.21
44.409	Dodecanal	0.01
45.064	beta-Caryophyllene	0.05
49.606	Valencene	0.03
51.152	Unidentified	0.01
51.587	Unidentified	0.01

Chromatogram Orange Oil Bitter-Edens Garden



Comments:

The analysis of this Orange, Bitter batch sample meets the expected chemical profile for authentic essential oil of *Citrus sinensis*. No contamination or adulteration was detected. The results provided in this GCMS quality analysis reflect the chemical composition of the oil and lot referenced above on the date of analysis.