

Sample Information

Analyzed by : Dr. Robert S. Pappas
 Analyzed : 8/01/2022 10:24:47 PM
 Sample Type : Essential Oil
 Sample Name : Birch - Edens Garden
 Sample ID : EG Lot #BC28DE
 Injection Volume : 0.10
 Instrument ID: : GC-

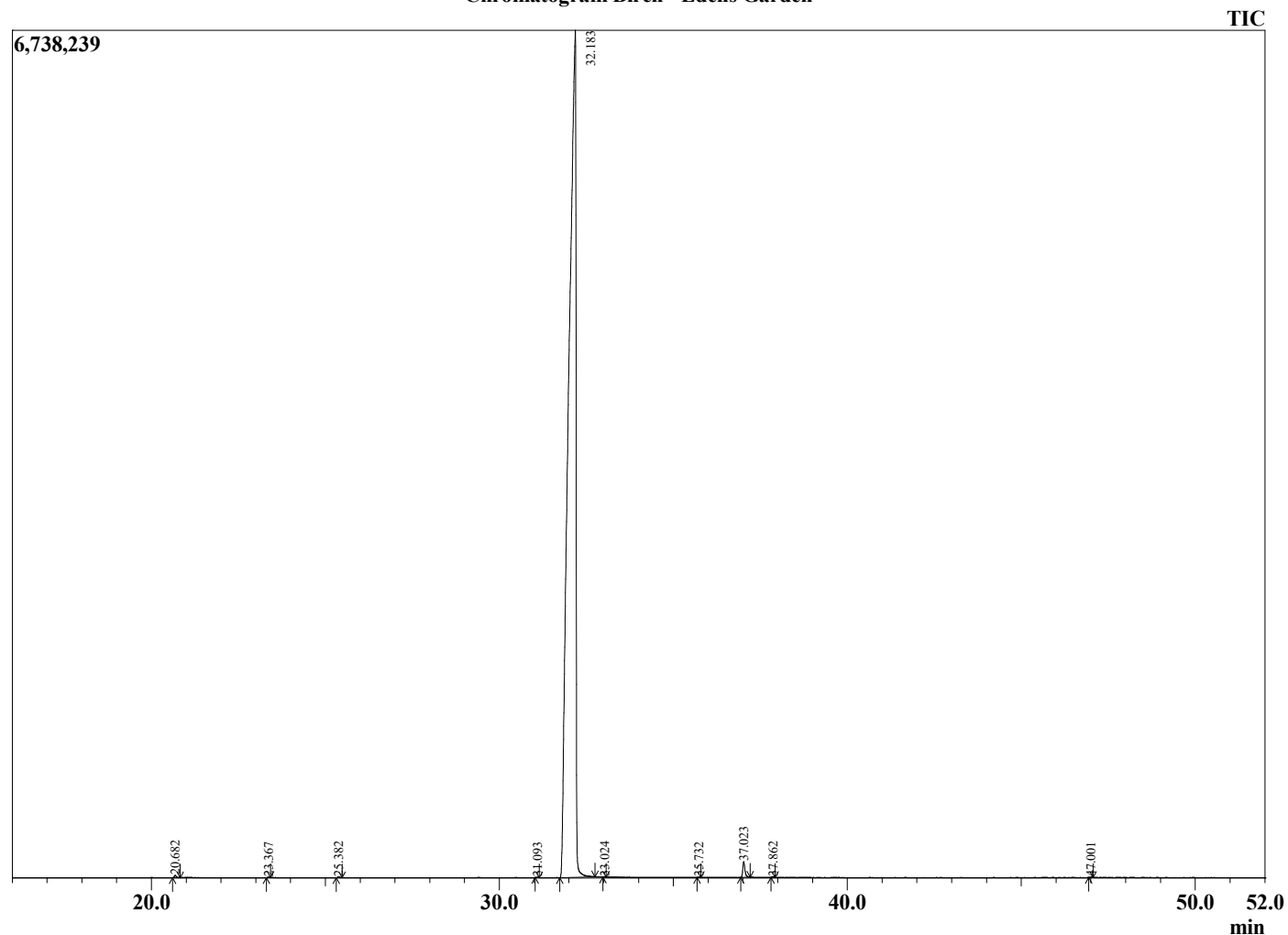
2



Peak Report TIC

R.Time	Name	Area%
20.682	Limonene	0.08
23.367	1-Octanol	0.01
25.382	Linalool	0.03
31.093	Terpinen-4-ol	0.01
32.183	Methyl salicylate	99.26
33.024	Octyl acetate	0.01
35.732	Nerol	0.01
37.023	Ethyl salicylate	0.56
37.862	Unidentified	0.02
47.001	trans-beta-Caryophyllene	0.01
		100.00

Chromatogram Birch - Edens Garden



Comments:

The analysis of this Birch batch sample meets the expected chemical profile for authentic essential oil of *Betula lenta*.

No contamination or adulteration was detected. The results provided in this GCMS quality analysis reflect the chemical composition of the oil and lot referenced above on the date of analysis.

©Copyright 2022 by Essential Oil University. All rights reserved. Any publishing, copying, use, dissemination, or distribution of this report, including online, without the express written permission of Essential Oil University is strictly prohibited.