

Sample Information

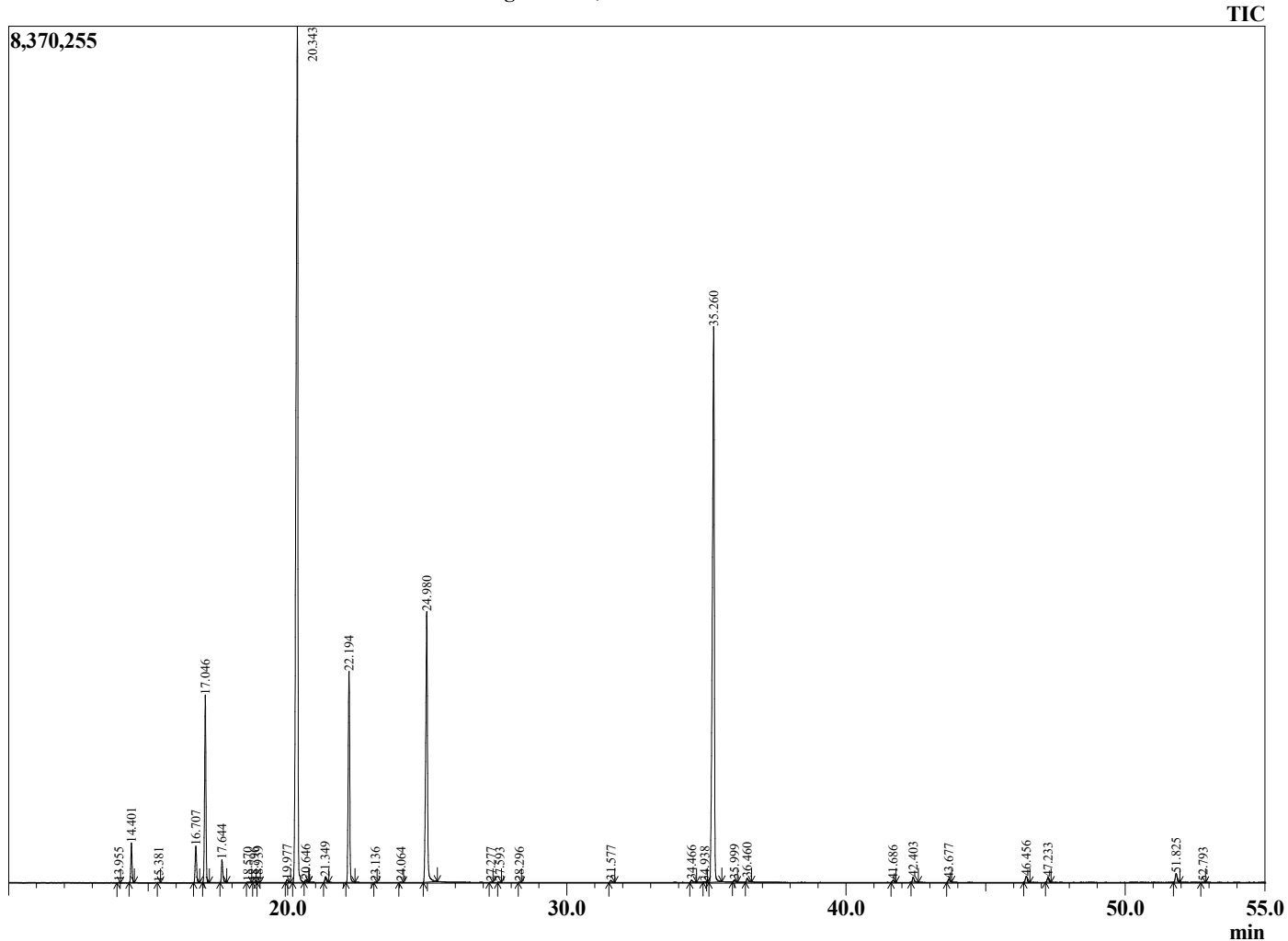
Analyzed by : Dr. Robert S. Pappas
 Analyzed : 7/13/2022 8:13:47 PM
 Sample Type : Essential Oil
 Sample Name : Bergamot Oil, Italy FCF - Eden's Garden
 Sample ID : BB18JA
 Injection Volume : 0.10
 Instrument ID : GC-2



Peak Report TIC

R.Time	Name	Area%
13.955	alpha-Thujene	0.01
14.401	alpha-Pinene	1.27
15.381	Camphene	0.01
16.707	Sabinene	1.25
17.046	beta-Pinene	6.42
17.644	Myrcene	0.81
18.570	Octanal	0.04
18.796	alpha-Phellandrene	0.01
18.939	delta-3-Carene	0.02
19.977	para-Cymene	0.13
20.343	Limonene	40.73
20.646	(Z)-beta-Ocimene	0.08
21.349	(E)-beta-Ocimene	0.21
22.194	gamma-Terpinene	7.79
23.136	Pinol	0.01
24.064	Terpinolene	0.03
24.980	Linalool	12.16
27.277	cis-Limonene oxide	0.02
27.593	trans-Limonene oxide	0.01
28.296	Camphor	0.01
31.577	alpha-Terpineol	0.10
34.466	Neral	0.11
34.938	Unidentified	0.03
35.260	Linalyl acetate	27.13
35.999	Unidentified	0.09
36.460	Geranial	0.18
41.686	alpha-Terpinyl acetate	0.09
42.403	Neryl acetate	0.23
43.677	Geranyl acetate	0.14
46.456	trans-beta-Caryophyllene	0.28
47.233	trans-alpha-Bergamotene	0.21
51.825	beta-Bisabolene	0.39
52.793	Unidentified	0.01
		100.00

Bergamot Oil, FCF - Eden's Garden



Comments:

The analysis of this Bergamot Oil, FCF batch sample meets the expected chemical profile for authentic essential oil of Citrus bergamia.

No contamination or adulteration was detected.

The results provided in this GCMS quality analysis reflect the chemical composition of the oil and lot referenced above on the date of analysis.