

Sample Information

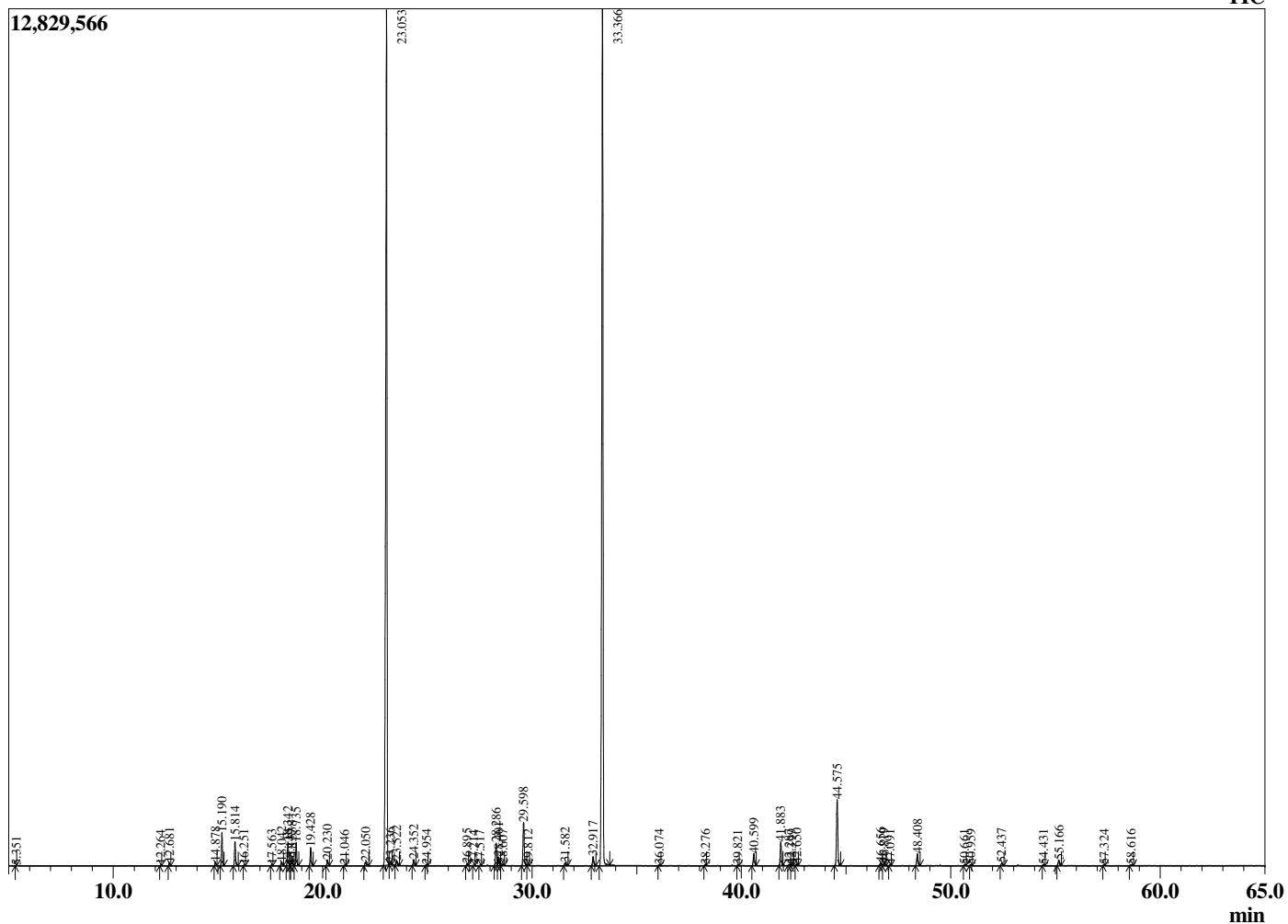
Analyzed by : Dr. Robert S. Pappas
 Analyzed : 6/25/2019 2:19:27 AM
 Sample Type : Essential Oil
 Sample Name : Bergamot Mint - Edens Garden
 Sample ID : AI02DD
 Injection Volume : 0.10
 Instrument ID : GC-3



Peak Report TIC

R.Time	Name	Area%
5.351	1-Pentanol	0.01
12.264	alpha-Thujene	0.02
12.681	alpha-Pinene	0.11
14.878	Sabinene	0.13
15.190	beta-Pinene	1.20
15.814	Myrcene	0.90
16.251	3-Octanol	0.03
17.563	alpha-Terpinene	0.03
18.042	para-Cymene	0.16
18.342	Limonene	0.93
18.449	beta-Phellandrene	0.03
18.538	1,8-cineole	0.38
18.735	cis-beta-Ocimene	0.90
19.428	trans-beta-Ocimene	0.72
20.230	gamma-Terpinene	0.23
21.046	cis-Linalool oxide (furanoid)	0.02
22.050	Terpinolene	0.20
23.053	Linalool	41.75
23.236	2-Methylbutyl 2-methylbutyrate	0.12
23.522	1-Octen-3-yl acetate	0.20
24.352	3-Octyl acetate	0.26
24.954	allo-Ocimene	0.04
26.895	Menthone	0.07
27.214	Pinocamphone	0.02
27.517	Isomenthone	0.02
28.286	Isopinocampnone	0.98
28.401	Menthol	0.39
28.607	Terpinen-4-ol	0.05
29.598	alpha-Terpineol	1.95
29.812	Unidentified	0.03
31.582	Nerol	0.15
32.917	Carvone	0.42
33.366	Linalyl acetate	41.11
36.074	Menthyl acetate	0.03
38.276	Myrtenyl acetate	0.03
39.821	alpha-Terpinyl acetate	0.02
40.599	Neryl acetate	0.54
41.883	Geranyl acetate	1.05
42.287	beta-Bourbonene	0.05
42.399	Unidentified	0.04
42.650	beta-Elementene	0.08
44.575	beta-Caryophyllene	3.21
46.656	trans-beta-Farnesene	0.13
46.819	alpha-Humulene	0.11
47.091	Alloaromadendrene	0.03
48.408	Germacrene D	0.56
50.661	delta-Cadinene	0.03
50.959	Dihydroagarofuran	0.04
52.437	Elemol	0.12
54.431	Caryophyllene oxide	0.05
55.166	Viridiflorol	0.27
57.324	gamma-Eudesmol	0.02
58.616	Unidentified	0.06
		100.00

Chromatogram Bergamot Mint - Edens Garden



Comments:

The analysis of this Bergamot Mint batch sample meets the expected chemical profile for authentic essential oil of *Mentha citrata*. No contamination or adulteration was detected.