

Sample Information

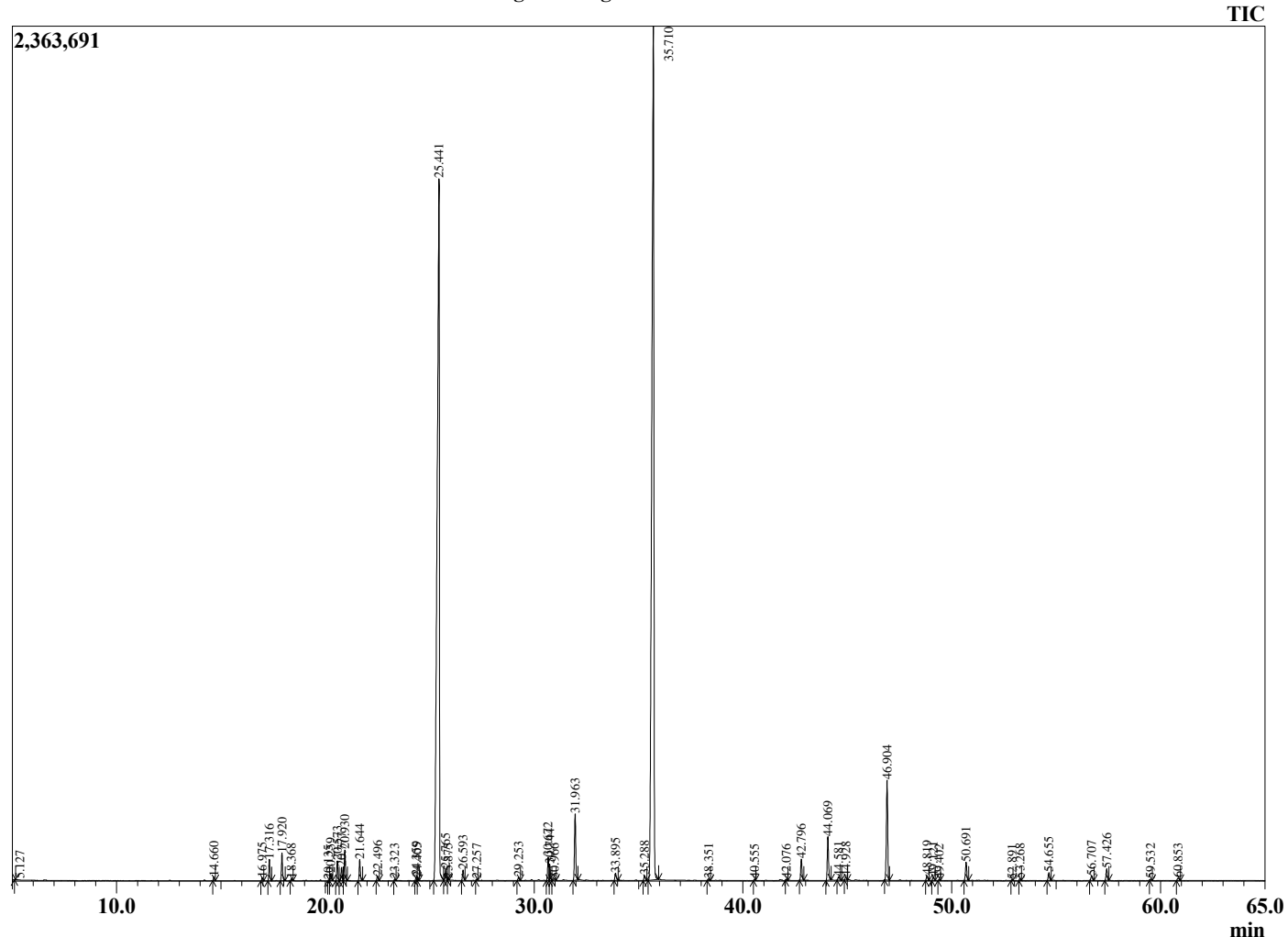
Analyzed by : Dr. Robert S. Pappas  
 Analyzed : 5/26/2021 8:26:58 PM  
 Sample Type : Essential Oil  
 Sample Name : Bergamot Mint - Edens Garden  
 Sample ID : BB01GD  
 Injection Volume : 0.10  
 Instrument ID : GC-2



Peak Report TIC

R.Time	Name	Area%
5.127	3-Methylbutanal	0.01
14.660	alpha-Pinene	0.09
16.975	Sabinene	0.08
17.316	beta-Pinene	0.58
17.920	Myrcene	0.75
18.368	3-Octanol	0.06
20.135	Unidentified	0.01
20.259	para-Cymene	0.19
20.573	Limonene	0.54
20.777	1,8-Cineole	0.38
20.930	(Z)-beta-Ocimene	0.83
21.644	(E)-beta-Ocimene	0.59
22.496	gamma-Terpinene	0.14
23.323	cis-Linalool oxide (furanoid)	0.04
24.359	Terpinolene	0.13
24.405	trans-Linalool oxide (furanoid)	0.05
25.441	Linalool	38.96
25.765	1-Octen-3-yl acetate	0.37
25.875	2-Methylbutyl isovalerate	0.03
26.593	3-Octyl acetate	0.30
27.257	allo-Ocimene	0.03
29.253	Menthone	0.11
30.672	Isopinocampone	0.72
30.744	Menthol	0.47
30.966	Terpinen-4-ol	0.06
31.963	alpha-Terpineol	2.07
33.895	Nerol	0.24
35.288	Carvone	0.18
35.710	Linalyl acetate	44.32
38.351	Menthyl acetate	0.06
40.555	Myrtenyl acetate	0.02
42.076	alpha-Terpinyl acetate	0.03
42.796	Neryl acetate	0.67
44.069	Geranyl acetate	1.36
44.581	Unidentified	0.13
44.928	beta-Elementene	0.11
46.904	trans-beta-Caryophyllene	3.29
48.819	(E)-beta-Farnesene	0.16
49.121	alpha-Humulene	0.12
49.402	Alloaromadendrene	0.03
50.691	Germacrene D	0.60
52.891	delta-Cadinene	0.02
53.268	beta-Dihydroagarofuran	0.06
54.655	alpha-Elementol	0.27
56.707	Caryophyllene oxide	0.19
57.426	Viridiflorol	0.38
59.532	gamma-Eudesmol	0.04
60.853	alpha-Eudesmol	0.11
		100.00

Chromatogram Bergamot Mint - Edens Garden



Comments:

The analysis of this Bergamot Mint batch sample meets the expected chemical profile for authentic essential oil of *Mentha citrata*. No contamination or adulteration was detected. The results provided in this GCMS quality analysis reflect the chemical composition of the oil and lot referenced above on the date of analysis.