

Sample Information

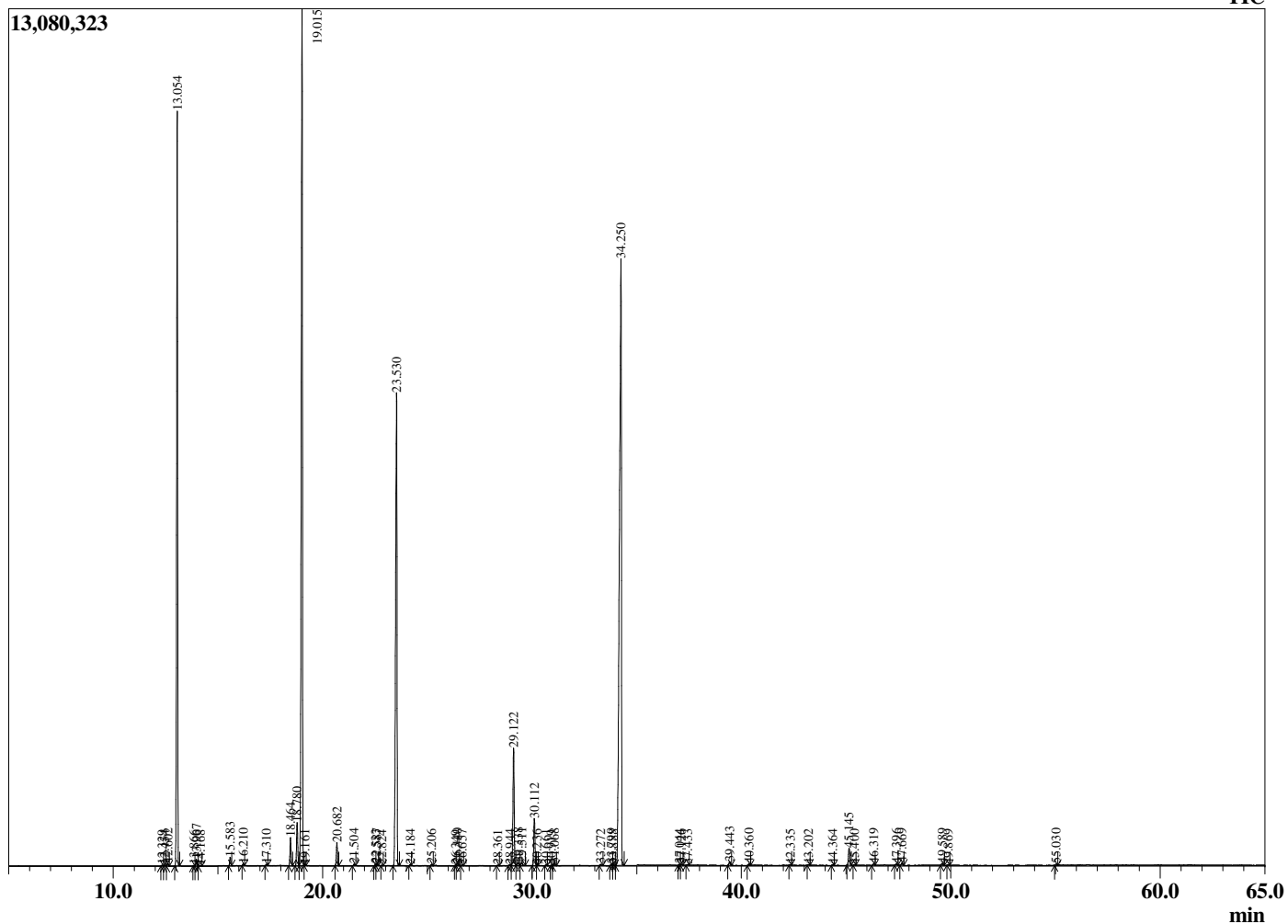
Analyzed by : Dr. Robert S. Pappas
 Analyzed : 8/29/2020 4:51:17 AM
 Sample Type : Essential Oil
 Sample Name : Balm mint Bush - Edens Garden
 Sample ID : BA08GB
 Injection Volume : 0.10
 Instrument ID : GC-3



Peak Report TIC

R.Time	Name	Area%
12.329	Hashishene	0.02
12.454	Tricyclene	0.02
12.602	alpha-Thujene	0.07
13.054	alpha-Pinene	18.41
13.866	alpha-Fenchene	0.02
13.967	Camphene	0.17
14.168	Thuja-2,4(10)diene	0.01
15.583	beta-Pinene	0.21
16.210	Myrcene	0.05
17.310	alpha-Phellandrene	0.03
18.464	para-Cymene	0.72
18.780	Limonene	1.25
19.015	1,8-cineole	25.49
19.161	cis-beta-Ocimene	0.02
20.682	gamma-Terpinene	0.63
21.504	cis-Linalool oxide (furanoid)	0.04
22.533	Terpinolene	0.03
22.587	trans-Linalool oxide (furanoid)	0.06
22.824	para-Cymenene	0.01
23.530	Linalool	16.30
24.184	Unidentified	0.02
25.206	cis-para-Menth-2-en-1-ol	0.04
26.349	trans-Pinocarveol	0.01
26.440	trans-para-Menth-2-en-1-ol	0.07
26.657	trans-Verbenol	0.02
28.361	Unidentified	0.01
28.944	Unidentified	0.03
29.122	Terpinen-4-ol	3.55
29.338	Unidentified	0.09
29.511	para-Cymen-8-ol	0.10
30.112	alpha-Terpineol	1.44
30.236	cis-Piperitol	0.02
30.661	alpha-Phellandrene epoxide	0.02
30.919	Verbenone	0.01
31.068	trans-Piperitol	0.07
33.272	Unidentified	0.04
33.799	Unidentified	0.05
33.888	Geraniol	0.02
34.250	Piperitone	29.64
37.044	Unidentified	0.03
37.126	Unidentified	0.03
37.433	Unidentified	0.02
39.443	delta-Elementene	0.12
40.360	alpha-Terpinyl acetate	0.04
42.335	alpha-Copaene	0.01
43.202	beta-Elementene	0.02
44.364	alpha-Gurjunene	0.02
45.145	beta-Caryophyllene	0.57
45.400	Unidentified	0.02
46.319	Aromadendrene	0.05
47.396	alpha-Humulene	0.04
47.669	Alloaromadendrene	0.08
49.589	Viridiflorene (Ledene)	0.06
49.869	Bicyclogermacrene	0.02
55.030	Caryophyllene oxide	0.04
		100.00

Chromatogram Balm mint Bush - Edens Garden



Comments:

The analysis of this Balm Mint Bush batch sample meets the expected chemical profile for authentic essential oil of *Prostanthera melissifolia*. No contamination or adulteration was detected. The results provided in this GCMS quality analysis reflect the chemical composition of the oil and lot referenced above on the date of analysis.