

Sample Information

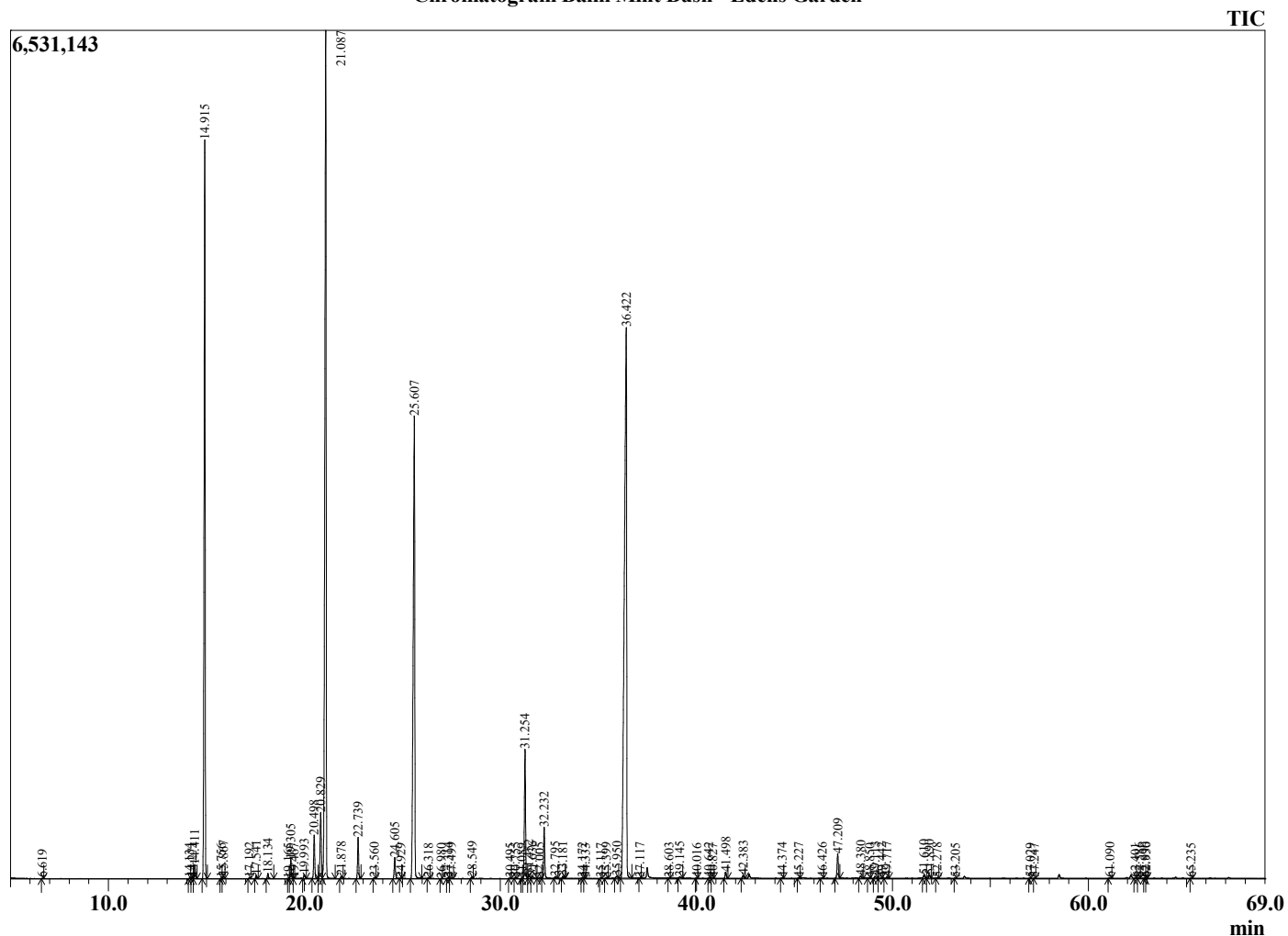
Analyzed by : Dr. Robert S. Pappas
 Analyzed : 7/29/2022 7:23:37 AM
 Sample Type : Essential Oil
 Sample Name : Balm Mint Bush - Edens Garden
 Sample ID : EG Lot #BB29HB
 Injection Volume : 0.10
 Instrument ID : GC-2



Peak Report TIC

R.Time	Name	Area%
6.619	3-Methyl butanol	0.01
14.134	Hashishene	0.02
14.271	Tricyclene	0.03
14.411	alpha-Thujene	0.28
14.915	alpha-Pinene	17.75
15.756	alpha-Fenchene	0.02
15.867	Camphene	0.07
17.192	Sabinene	0.02
17.541	beta-Pinene	0.07
18.134	Myrcene	0.14
19.165	Unidentified	0.01
19.305	alpha-Phellandrene	0.44
19.467	Unidentified	0.01
19.993	alpha-Terpinene	0.11
20.498	para-Cymene	1.06
20.829	Limonene	1.87
21.087	1,8-cineole	25.36
21.878	(E)-beta-Ocimene	0.06
22.739	gamma-Terpinene	0.97
23.560	cis-Linalool oxide (furanoid)	0.02
24.605	Terpinolene	0.55
24.929	Dehydro-p-cymene	0.01
25.607	Linalool	15.94
26.318	Unidentified	0.01
26.980	alpha-Fenchol	0.01
27.314	cis-para-Menth-2-en-1-ol	0.03
27.499	Unidentified	0.02
28.549	trans-para-Menth-2-en-1-ol	0.05
30.495	Unidentified	0.02
30.755	Unidentified	0.01
31.089	Unidentified	0.01
31.254	Terpinen-4-ol	3.38
31.452	Unidentified	0.12
31.636	para-Cymen-8-ol	0.09
32.005	Methyl salicylate	0.04
32.232	alpha-Terpineol	1.39
32.795	alpha-Phellandrene epoxide	0.06
33.181	trans-Piperitol	0.06
34.172	Unidentified	0.02
34.333	Unidentified	0.01
35.117	Neral	0.02
35.399	Unidentified	0.04
35.950	Geraniol	0.08
36.422	Piperitone	27.99
37.117	Geranial	0.01
38.603	Unidentified	0.02
39.145	Unidentified	0.05
40.016	Unidentified	0.01
40.642	Unidentified	0.03
40.827	Unidentified	0.02
41.498	delta-Elementene	0.18
42.383	alpha-Terpinyl acetate	0.08
44.374	Unidentified	0.02
45.227	beta-Elementene	0.02
46.426	alpha-Gurjunene	0.02
47.209	trans-beta-Caryophyllene	0.69
48.380	Aromadendrene	0.09
48.850	alpha-Guaiene	0.02
49.113	(E)-beta-Farnesene	0.07
49.442	alpha-Humulene	0.02
49.717	Alloaromadendrene	0.05
51.610	Viridiflorene	0.10

Chromatogram Balm Mint Bush - Edens Garden



Comments:

The analysis of this Balm Mint Bush batch sample meets the expected chemical profile for authentic essential oil of Prostanthera melissifolia.

No contamination or adulteration was detected. The results provided in this GCMS quality analysis reflect the chemical composition of the oil and lot referenced above on the date of analysis.

©Copyright 2022 by Essential Oil University. All rights reserved. Any publishing, copying, use, dissemination, or distribution of this report, including online, without the express written permission of Essential Oil University is strictly prohibited.

R.Time	Name	Area%
51.890	Bicyclogermacrene	0.09
52.278	trans,trans-alpha-Farnesene	0.02
53.205	delta-Cadinene	0.01
57.029	Caryophyllene oxide	0.01
57.247	Viridiflorol	0.01
61.090	alpha-Bisabolol oxide B	0.03
62.401	Unidentified	0.01
62.586	alpha-Bisabolone oxide A	0.02
62.890	Unidentified	0.01
62.936	Unidentified	0.02
65.235	Chamazulene	0.01
		100.00