

Sample Information

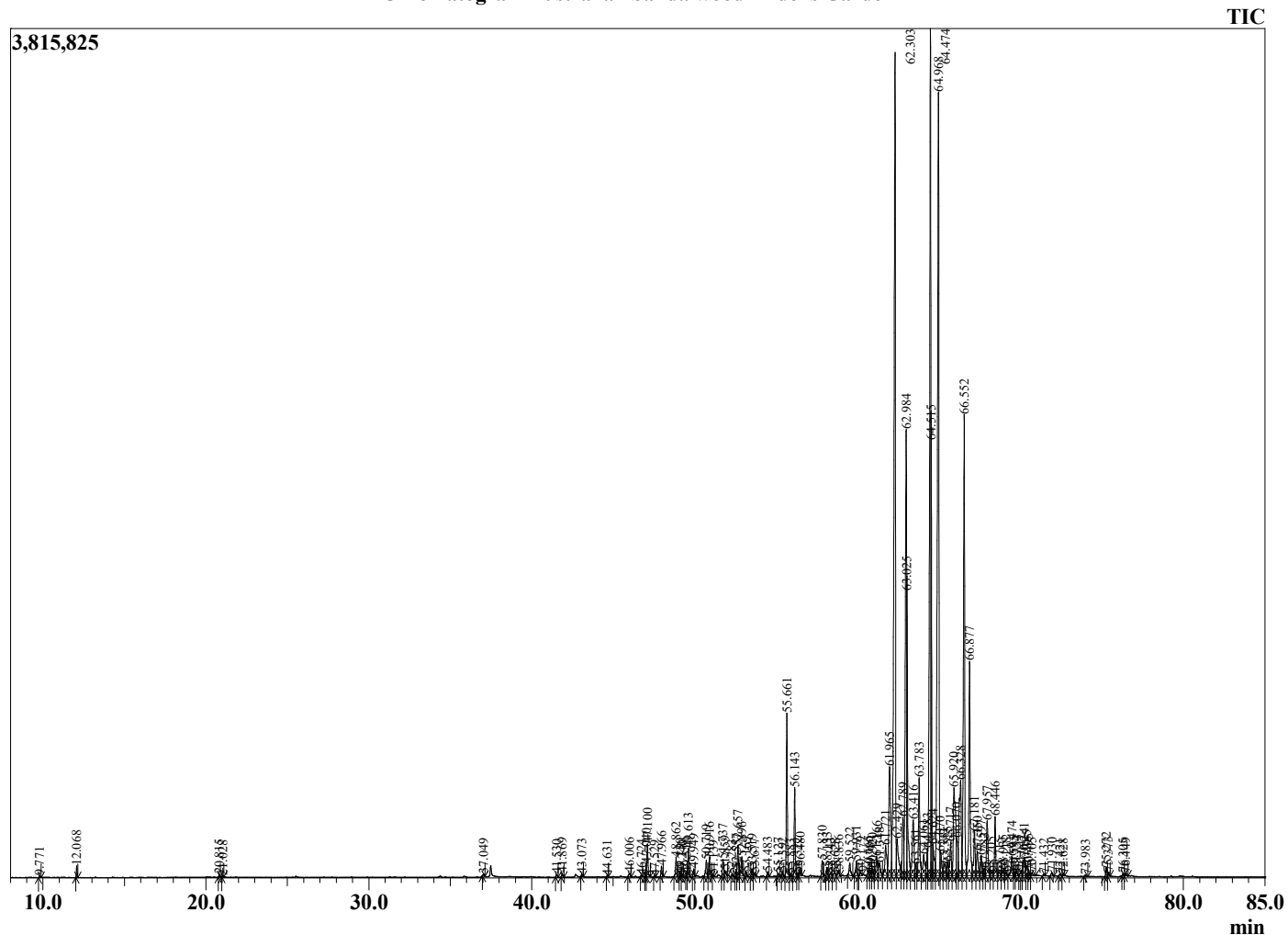
Analyzed by : Dr. Robert S. Pappas
 Analyzed : 7/13/2022 1:40:37 AM
 Sample Type : Essential Oil
 Sample Name : Australian Sandalwood - Edens Garden
 Sample ID : BC07CV
 Injection Volume : 0.10
 Instrument ID : GC-2



Peak Report TIC

R.Time	Name	Area%
9.771	Furfural	0.03
12.068	Santene	0.10
20.815	Limonene	0.03
21.028	1,8-Cineole	0.02
37.049	Unidentified	0.03
41.530	delta-Elemene	0.04
41.869	Unidentified	0.05
43.073	Unidentified	0.03
44.631	Unidentified	0.02
46.006	7-epi-Sesquithujene	0.07
46.724	cis-alpha-Bergamotene	0.02
47.040	alpha-Cedrene	0.11
47.100	alpha-Santalene	0.46
47.529	beta-Cedrene	0.01
47.966	trans-alpha-Bergamotene	0.13
48.862	epi-beta-Santalene	0.27
49.130	cis-beta-Farnesene	0.04
49.240	Unidentified	0.02
49.510	trans-beta-Farnesene	0.04
49.613	beta-Santalene	0.37
49.949	alpha-Acoradiene	0.10
50.719	gamma-Curcumene	0.25
50.916	Ar-Curcumene	0.26
51.139	Unidentified	0.01
51.737	Unidentified	0.25
51.859	Unidentified	0.11
52.283	(E,E)-alpha-Farnesene	0.02
52.557	beta-Bisabolene	0.08
52.657	beta-Curcumene	0.41
52.896	Sesquicineole	0.32
53.169	Unidentified	0.07
53.519	beta-Sesquiphellandrene	0.10
53.677	Unidentified	0.04
54.483	trans-alpha-Bisabolene	0.07
55.127	Unidentified	0.05
55.392	Unidentified	0.05
55.661	trans-Nerolidol	2.15
55.883	Unidentified	0.04
56.143	Dendaralasin	1.17
56.322	Unidentified	0.05
56.480	Unidentified	0.12
57.830	Guaiol	0.22
58.133	Unidentified	0.12
58.343	alpha-Santalene	0.07
58.628	Unidentified	0.09
58.836	Unidentified	0.12
59.522	Unidentified	0.24
59.931	alpha-Acorenol	0.24
60.179	beta-Acorenol	0.07
60.665	Unidentified	0.08
60.780	Unidentified	0.08
60.920	Unidentified	0.10
61.166	Unidentified	0.37
61.348	Unidentified	0.29
61.721	Bulnesol	0.71
61.965	beta-Bisabolol	2.72
62.303	Z-alpha-Santalol	15.12
62.429	Unidentified	0.92
62.789	Unidentified	1.06
62.984	epi-alpha-Bisabolol	7.24
63.025	Z-alpha-trans-Bergamotol	2.75
63.416	Unidentified	1.26

Chromatogram Australian Sandalwood - Edens Garden



Comments:

The analysis of this Australian Sandalwood batch sample meets the expected chemical profile for authentic essential oil of Santalum spicatum.

No contamination or adulteration was detected. The results provided in this GCMS quality analysis reflect the chemical composition of the oil and lot referenced above on the date of analysis.

©Copyright 2022 by Essential Oil University. All rights reserved. Any publishing, copying, use, dissemination, or distribution of this report, including online, without the express written permission of Essential Oil University is strictly prohibited.

R.Time	Name	Area%
63.561	Unidentified	0.16
63.783	Z-epi-beta-Santalol	1.63
64.061	E-alpha-trans-Bergamotol	0.57
64.283	Unidentified	0.34
64.474	(2E,6E)-Farnesol	13.28
64.515	Z-beta-Santalol	3.26
64.624	Unidentified	0.61
64.968	Z-Nuciferol	14.97
65.070	Unidentified	0.44
65.343	Unidentified	0.32
65.525	Farnesal	0.24
65.717	E-beta-Santalol	0.59
65.920	Unidentified	2.42
66.070	Unidentified	0.63
66.328	Santalol acetate isomer	2.51
66.552	E-Nuciferol	7.16
66.877	cis-Lanceol	3.54
67.181	Unidentified	0.82
67.350	Unidentified	0.52
67.597	Unidentified	0.35
67.783	Lanceol isomer	0.13
67.957	Unidentified	1.08
68.205	Unidentified	0.11
68.446	Lanceol isomer	0.87
68.715	Unidentified	0.10
68.935	Unidentified	0.11
69.118	Unidentified	0.06
69.474	Unidentified	0.37
69.595	Unidentified	0.07
69.754	Unidentified	0.09
70.042	Unidentified	0.11
70.241	Unidentified	0.37
70.385	Unidentified	0.17
70.495	Farnesyl acetate	0.09
70.705	Unidentified	0.06
71.432	Unidentified	0.02
71.930	Unidentified	0.06
72.421	Unidentified	0.04
72.628	Unidentified	0.03
73.983	Unidentified	0.03
75.272	Unidentified	0.13
75.373	Unidentified	0.06
76.305	Unidentified	0.03
76.449	Unidentified	0.04
		100.00