

Irritrol I-PRO™ Series Pop-up

Irritrol's new I-PRO™ Series spray heads combine a pressure-activated wiper seal and advanced formula lubricant that virtually eliminate troublesome stick ups. Add a unique tapered lip design that prevents debris from entering the body and you have a spray head with superior performance. It's rugged and reliable with a textured body style for a non-slip grip and even easier installation.

Available in four pop-up heights with side inlet and check valve options, the I-PRO™ Series fits most landscape applications.

Features

Pressure-Activated Seal with lubricant Additive

Cleans debris from stem, reduces flow-by during pop-up and prevents leaking between cap and body. Extra lubricant additive further eliminates stick-ups.

Check valve (optional)

Prevents low-head drainage, eliminating flood or erosion damage by keeping water in lateral pipes in elevation changes up to 3.9 m.

Sturdy and Robust , Textured Body

Provides for easy installation with a non-slip grip.

Side and bottom inlets on 150 mm and 300 mm models (150 mm also available in non-side inlet)

Reduces installation time.

Heavy-duty, stainless steel retraction spring

Ensures positive pop-down.

Male-threaded riser

Compatible with any female-threaded nozzle in the industry.

Pre-installed flush plug

Makes system flushing a breeze and allows for easy nozzle installation.

Ratcheting riser

Two-piece mechanism permits easy arc adjustment in the field while sprinkler is operating.

Ordering Information

Code	Description
I-PRO300	80 mm I-Pro Pop-up body only
I-PRO400	100 mm I-Pro Pop-up body only
I-PRO600-SI	150 mm I-Pro Pop-up body only, bottom and side inlets
I-PRO1200-SI	300 mm I-Pro Pop-up body only, bottom and side inlets
I-PRO-NPC	I-Pro Lilac Reclaimed Water Cap
I-PRO-CV	I-Pro Check Valve

Specifications

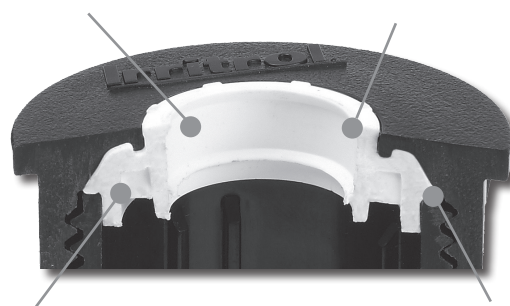
- Inlet size: 15 mm (½") female
- Exposed diameter: 57 mm
- Body diameter: 41 mm
- Body height:
 - I-PRO300: 124 mm
 - I-PRO400: 146 mm
 - I-PRO600: 235 mm
 - I-PRO1200: 407 mm
- Side inlet: 111 mm from centre of side inlet to top of cap
- Recommended working pressure:
 - Standard: 138-345 kPa (max 517 kPa)
 - CV: 172-345 kPa (max 517 kPa)
- Radius of throw: 1.3 – 5.5 m
- Flow-by: 0 at 69 kPa or greater; 0.38 Lpm otherwise
- 5 year warranty



Superior Performing Wiper Seal

Additional lubricant additive further eliminates stick-ups

Tapered lip design prevents the intrusion of debris



Pressure-activated lip seal ensures a positive seal around the riser and reduces "flow-by"

Lip creates positive seal to prevent body to cap leaks