

# Replacing the Circuit Board on the Scoop Rival and Quest

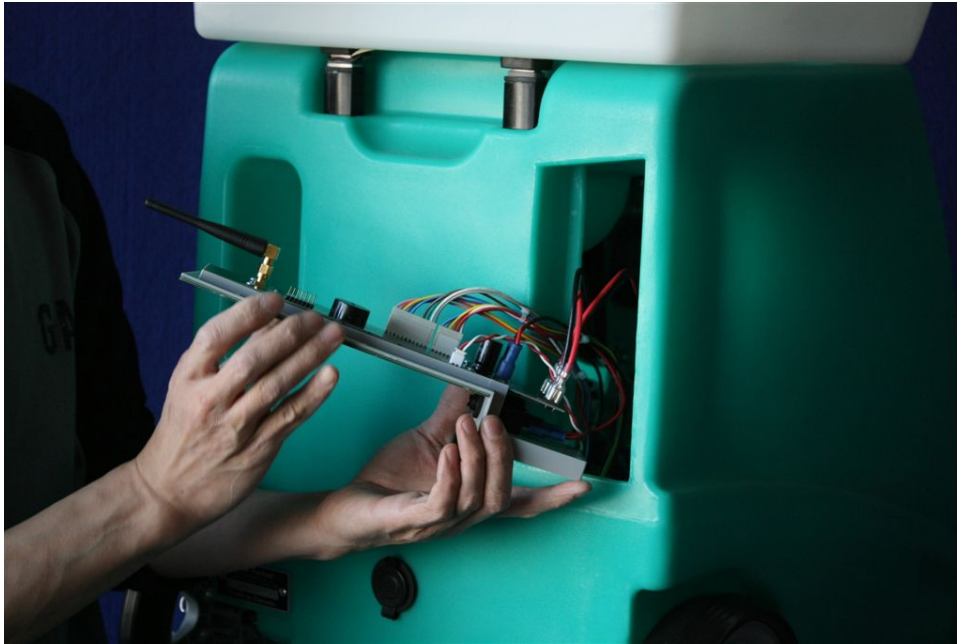
1. Remove the four screws that hold the panel in place.



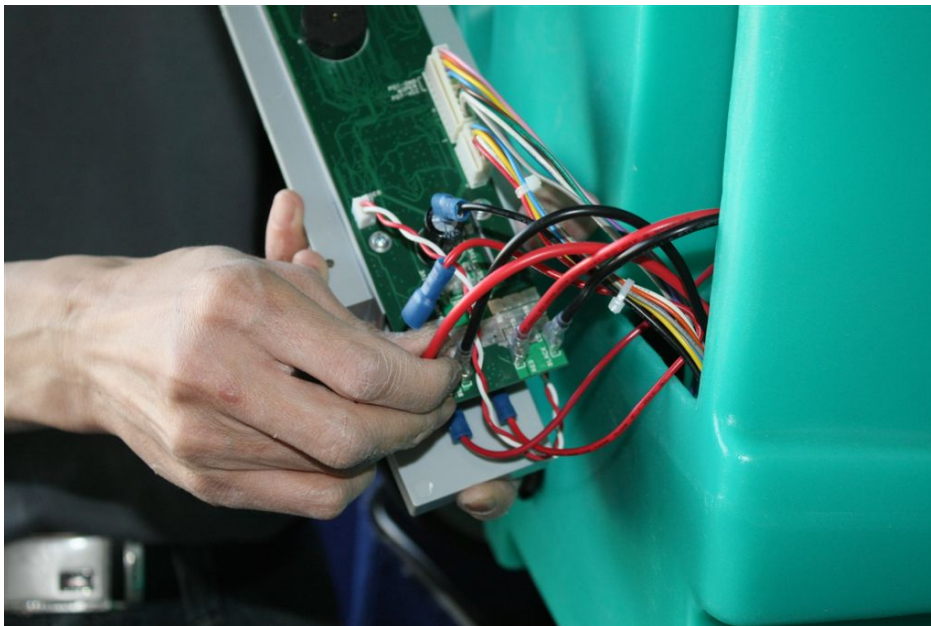
2. Allow the panel to slip a third of the way into the machine.



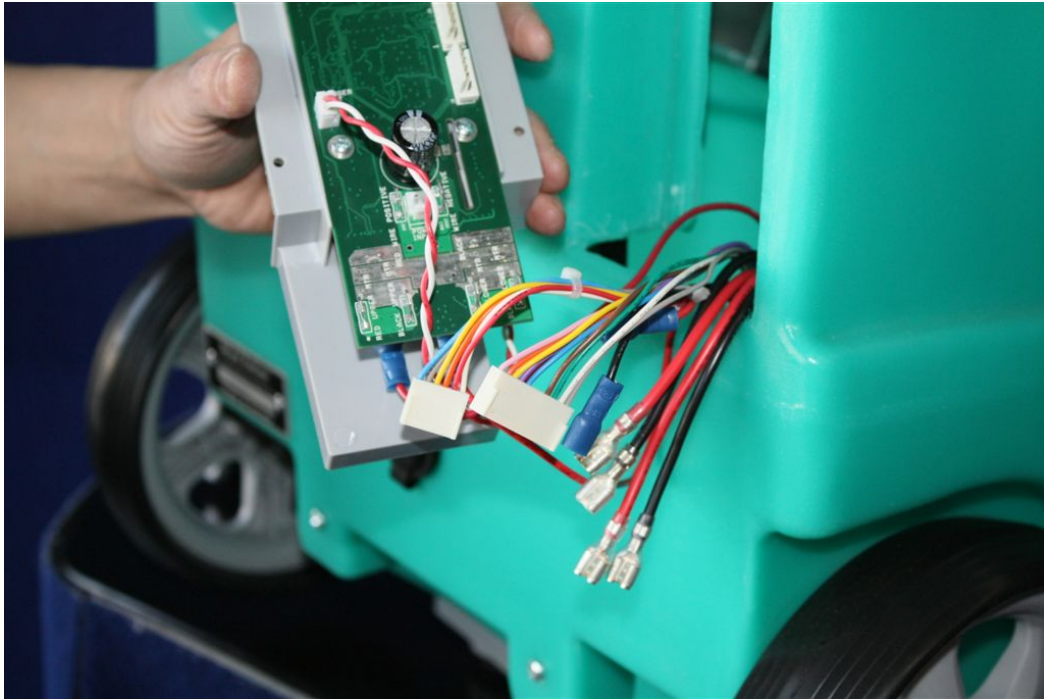
3. Tilt the top of the panel towards you and extra the assembly with all wires connected.



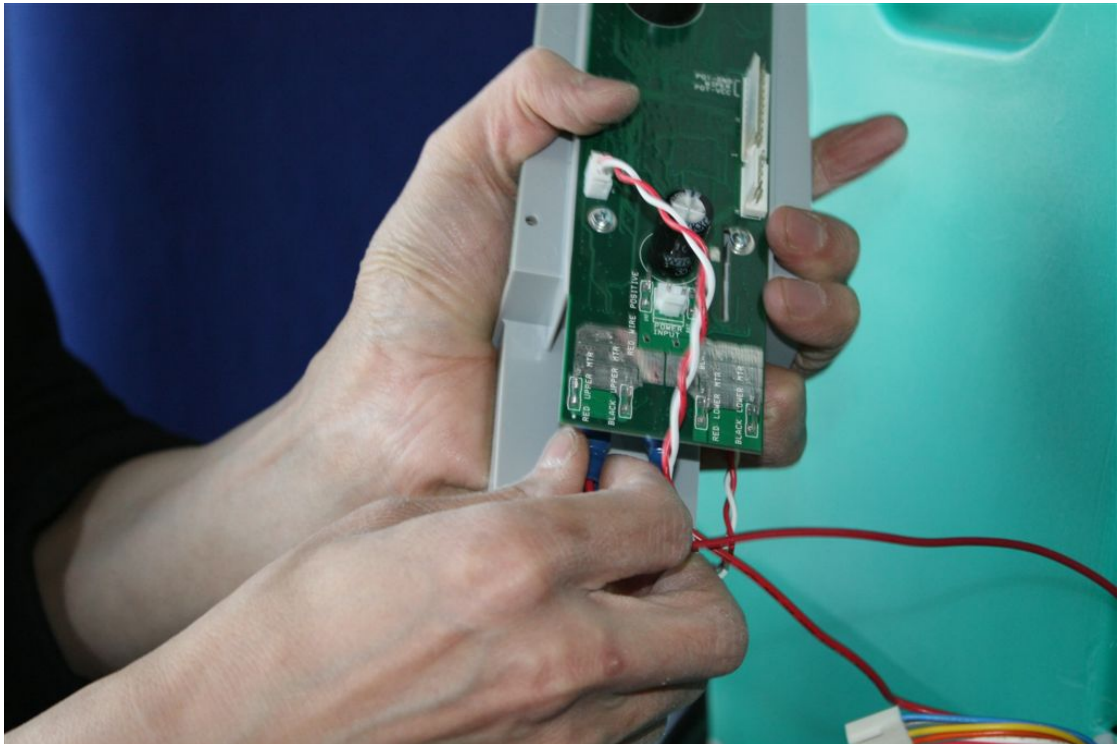
4. Disconnect all wires carefully after labeling them. Exercise particular care when removing the thick red and black wires at the bottom of the board (the hand in the picture is pulling one of these wires). The lower part of the board is not supported, so you should support it by hand when pulling these wires. Always grab the connector rather than the wire itself, and it is desirable to wiggle the connectors as you pull upward. The only wires not disconnected are the twisted thin white and red wires.



5. Most wires have been disconnected, but the twisted thin wires are left connected.

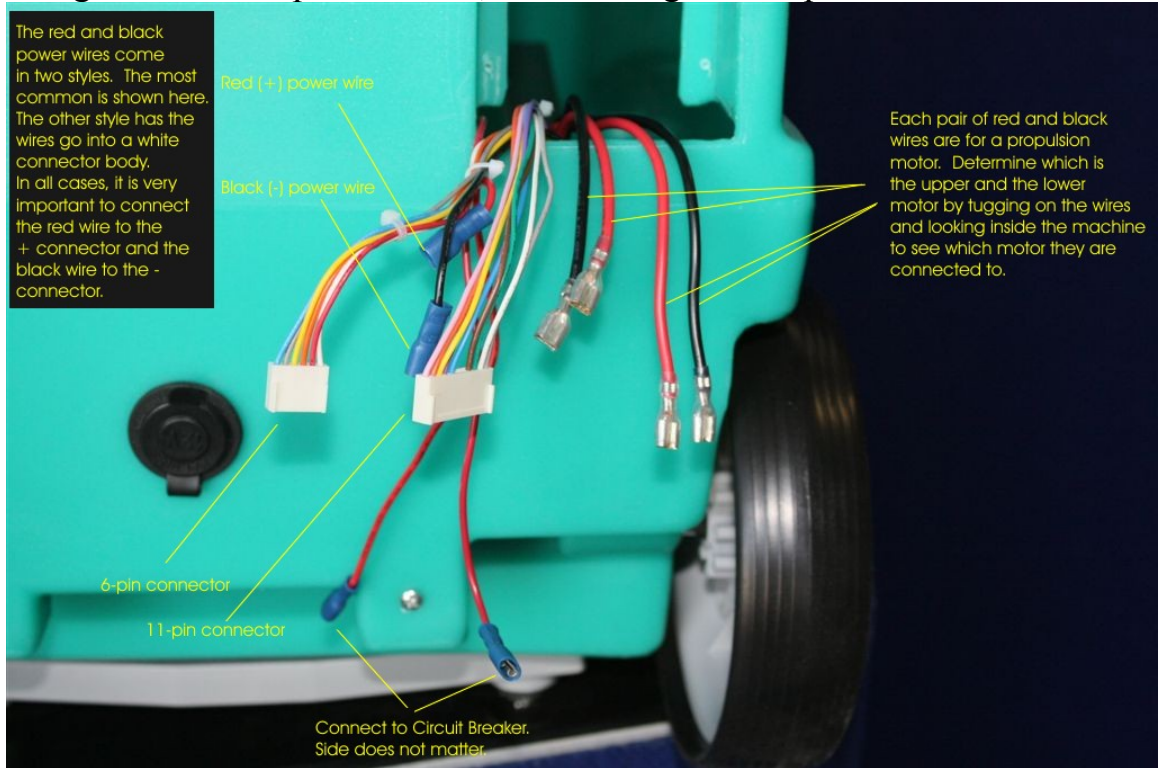


6. The two thick wires connected to the circuit breaker must also be disconnected.

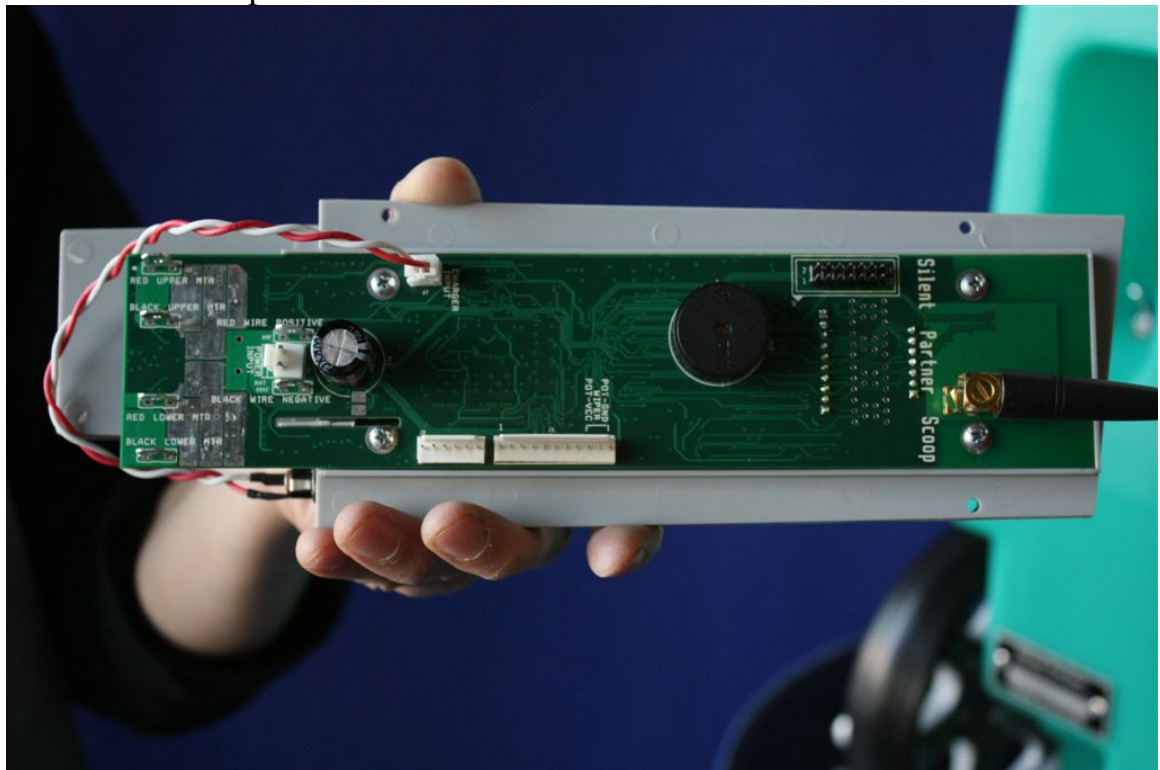




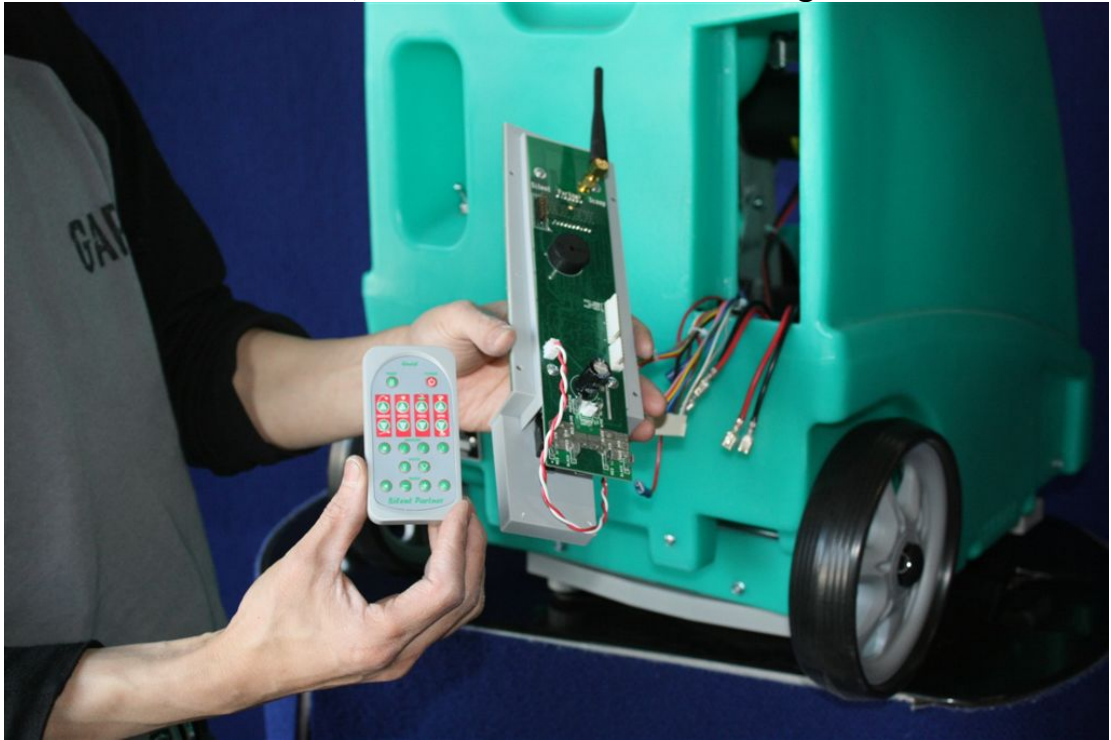
7. You must be nervous about where the various wires and connectors will go on the new panel. Relax, this labeling will help.



8. And this is a helpful reference of the connectors on the PCB.



9. This is what you will need to return to the factory. The remote control is matched to the board, so it is best to return them together.



10. Retrace the preceding steps to install the board.