



Open a High-speed Era of Professional Applications

EXTRAORDINARY SPEED



Guider 3 **Ultra**

Dual-extruder structure unleashing designs

- ◆ Tool-free quick-change hotend, making maintenance and replacement easier.
- ◆ All-metal hot end, with the highest extruder temperature of 350°C, adapting to more materials.
- ◆ Structure optimization, reducing the risk of nozzle clogs and other problems.

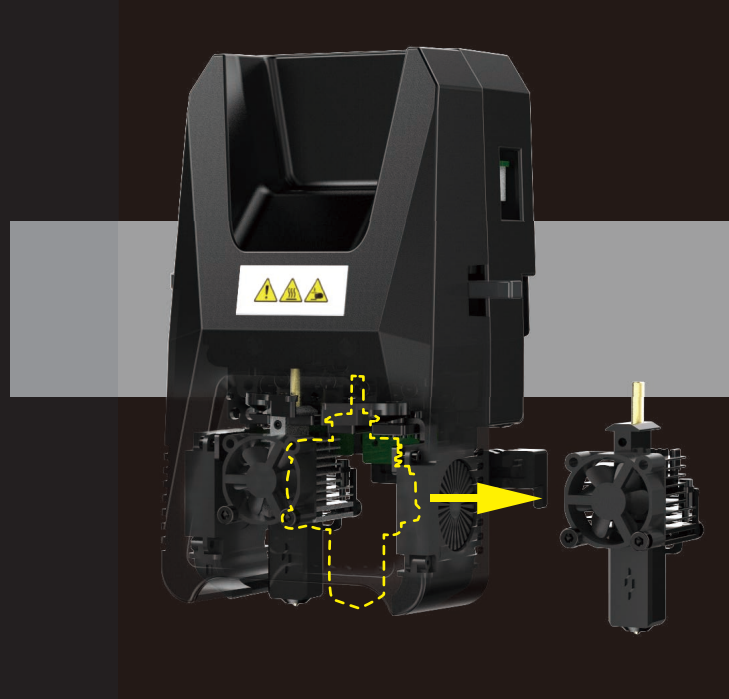
Faster speed
More stable operation
Higher production efficiency

20000 MM/S²
Acceleration

500 MM/S
Printing Speed

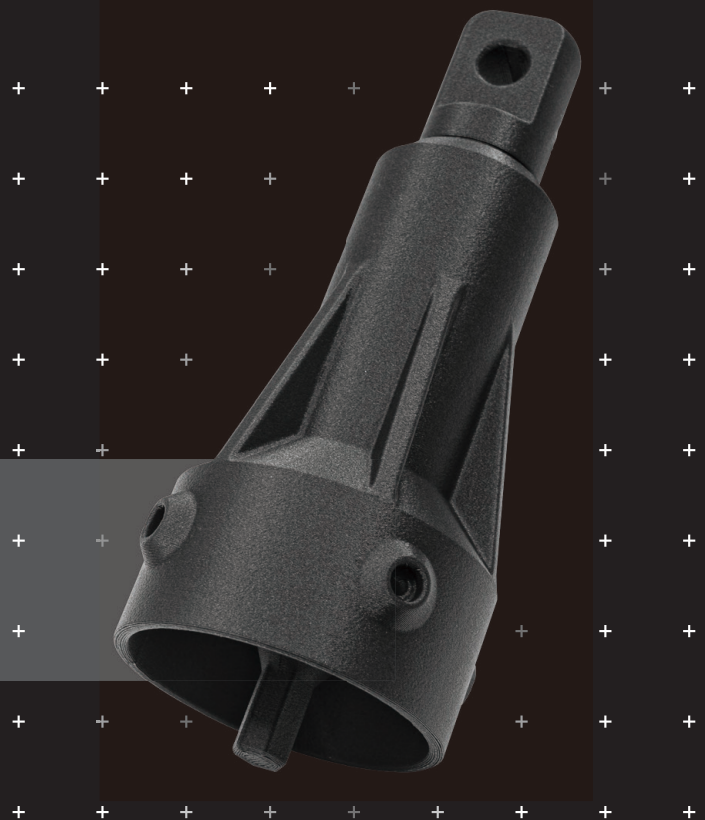
7 x 24 h
Stable Operation

CoreXY Structure



High surface quality

Dual Z-axis ball screws offer accurate layer positioning. The vibration suppression algorithm eliminates unnecessary vibrations during high-speed printing. The extrusion flow rate is accurately controlled as well, so as to output superior surface quality and better details.



Open material system Compatible with third-party filaments

- PLA
- ABS
- HIPS
- PC
- ASA
- PETG
- Nylon
- PVA
- Glass Fiber Reinforced
- Carbon Fiber Reinforced

Note: Glass fiber reinforced and carbon fiber reinforced filaments should be used with high-strength nozzles.

◆ Third-party Filaments Supported

Open third-party material configuration. FlashPrint is compatible with multi-brand filaments, providing wider choices.



Application Areas



Product Development Verification

- Shorten verification time
- Accelerate design optimization
- Speed up mass production while reduce costs



Jigs, Fixtures & Parts of the Assembly Line

- Jigs and fixtures for assembly
- Replenish damaged equipment parts of the assembly line in time



Finished Parts

- Customized parts
- Temporary test parts
- Parts for small-batch use



Teaching Aids

- Offer 3D printing training courses
- Print out students' design



Architecture/Art

- Conceptual models
- Customized presentation

Parameters

Extruder Quantity	2
Printing Precision	±0.15 mm or 0.002 mm/mm [The larger values shall prevail]
Positioning Accuracy	X/Y-axis 0.011 mm / Z-axis 0.0025 mm
Layer Thickness	0.05 ~ 0.4 mm
Build Volume	[Single extruder]330 x 330 x 600 mm [Dual extruders]300 x 330 x 600 mm
Nozzle Diameter	0.4 [0.6/0.8 mm Optional]
Nozzle Type	High-strength nozzle
Printing Speed	Max. 500mm/s
Extruder Movement Acceleration	20000mm/s ²
Maximum Extruder Temperature	350 °C
Maximum Platform Temperature	120 °C
Supported Filament	PLA / PETG / ASA / ABS / PC / PA / PLA-CF / PETG-CF PETG GF / PA-CF / PA-GF
Power Supply	AC100-240V / 50-60Hz / 850W Max
Slicing Software	FlashPrint 5
Input/Output File Format	Input: 3MF / STL / OBJ / FPP / BMP / PNG / JPG / JPEG Output: GX/G files / Gcode
Connectivity	USB Flash Drive / Ethernet / Wi-Fi
Certification	CE / FCC / RoHS
Operation Temperature	15-30 °C
Compatible Operating System	Windows XP / Vista / 7 / 8 / 10 / Mac OS
Compatible Slicing Software	Slic3r / Cura [Need Setting]
Smart Touch Screen	7-inch
Build Plate	Flexible Steel Plate Platform

Other Features

- Fully-enclosed Design
- Automatic Leveling
- Filament Run-out Reminder
- Replaceable Build Plate
- Quick-release Nozzle
- Power Loss Recovery
- Remote Video Monitoring
- Air Filter Net
- Cloud Platform
- Ultra-silent Design

Zhejiang Flashforge 3D Technology Co., Ltd.

Tel: +86 579 82273989 Email: support@flashforge.com
No.518 XianYuan Road, Jinhua City, Zhejiang Province, China

