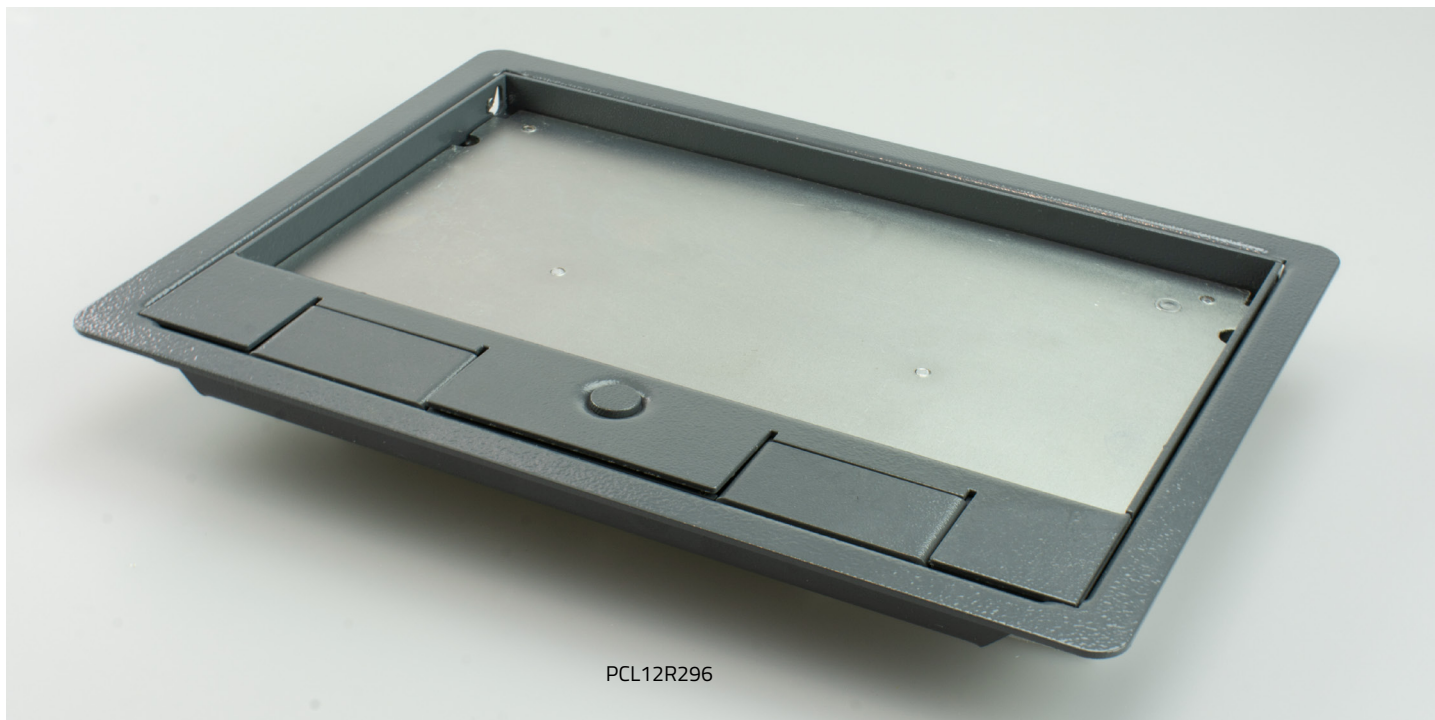


SPECIFICATION SHEET
Powder Coated Frame & Lid
Model: PCL12R296



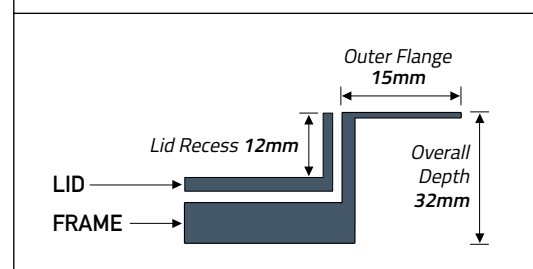
Product Description

- Made from Powder Coated Steel
- Designed for use with TFB3s Floor box and TSB2/75 Screed box
- Lifting handle with cable flap
- 12mm recess, ideal for ceramic tiles, laminate floors or thick carpets.
- Colour equivalent to RAL7031
- Designed specifically for high traffic environments such as schools, colleges and many other uses
- Steel frame and lid designed to withstand loads up to 740kg

Specifications

Model:	PCL12R296
Overall Dimensions:	280mm x 230mm
Recessed Area:	241mm x 148mm
Colour:	Grey (RAL7031)
Availability:	TFB3s, TSB2/75
Lid Recess:	12mm
Outer Flange:	15mm
Overall Depth:	32mm

Frame & Lid Profile View



Contact: sales@floorbox.co.uk | **Visit:** www.floorbox.co.uk

Customer notice: Due to our policy of continuous improvement, Tass Cable Management Ltd reserve the right to change product specifications without notice. Tass Cable Management Ltd © | Floorbox.co.uk © | 2019 | All rights Reserved.

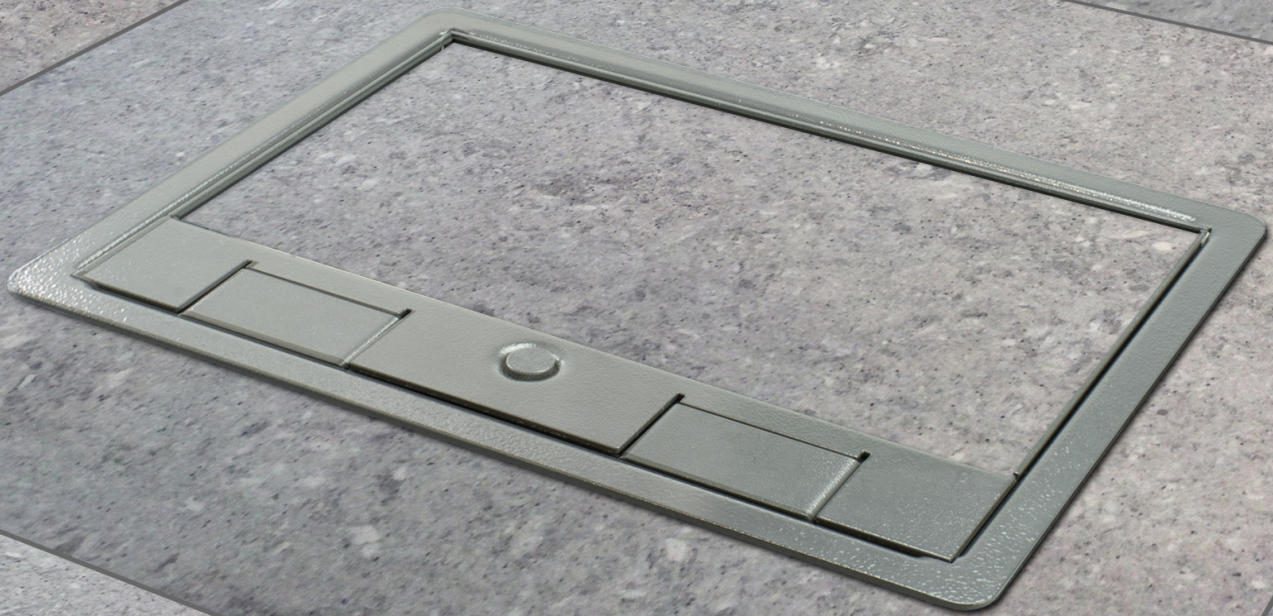


Illustration showing model: PCL20R281 (20mm Recessed Lid)

Powder Coated Steel Frame & Lid Options

- 12mm & 20mm lid recess options available
- Designed specifically for high traffic environments
- Steel frame and lid designed to withstand loads of upto 740kg

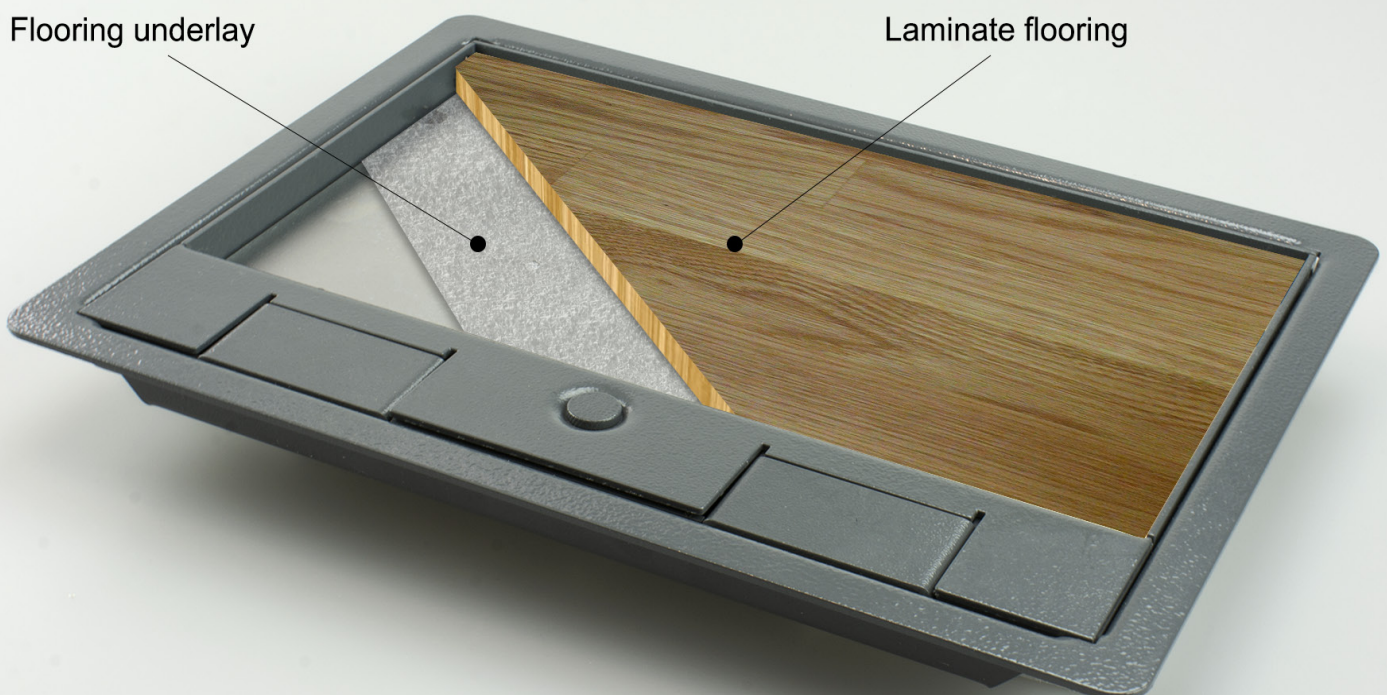


Illustration showing model: PCL12R281 (12mm Recessed Lid)