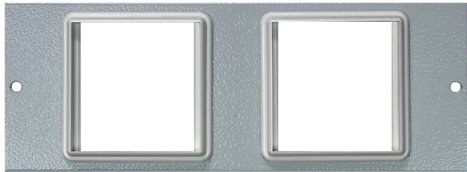
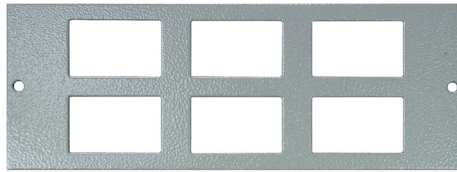


SPECIFICATION SHEET

4 Compartment Floor Box Plates



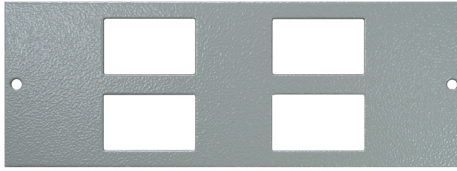
ST0279 ^[1]
2 x 50mm Euro Module Plate



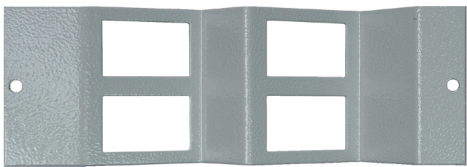
ST0280
6 Way Data Plate
6 x 37x22mm LJ6C Module Cutouts



ST0282
Blank Plate



ST0285
4 Way Data Plate
4 x 37x22mm LJ6C Module Cutouts



ST0285/W
4 Way Data Wave Plate
4 x 37x22mm LJ6C Module Cutouts



ST0290/RH
Right Hand Twin Switched Sockets



ST0290/LH
Left Hand Twin Switched Sockets



ST0405
Triple Unswitched Sockets

Product Information

Product Type
Cavity & Screed Floor Box Plates

Suitable For:
TFB4, TSB4

Plate Dimensions
185mm x 68mm

Material
Galvanised Steel

Finish
Leatherette texture Powder Coating

Colour
Equivalent to RAL7035 / Light Grey

Note [1]:
ST0279 is supplied fitted with 2 x 50x50mm Euro collars (see below), to be used in conjunction with listed Socket modules.

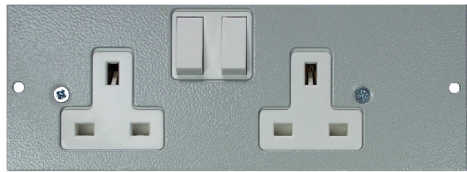


EURO COLLAR

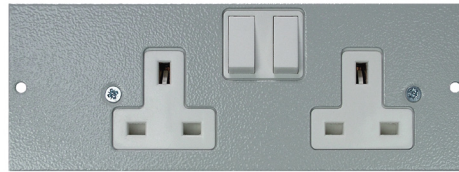
Note [2]:
Side wired twin switched socket plates (ST0290/SW/LH & ST0290/SW/RH) are recommended for use with TFB4/64 cavity box and TSB4/65 screed box.

SPECIFICATION SHEET

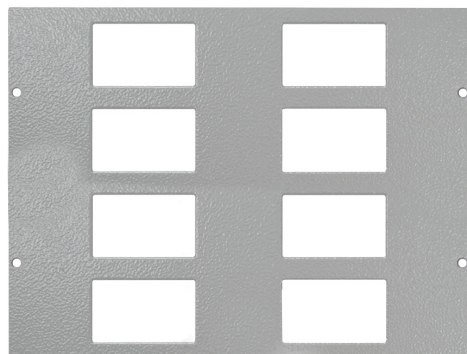
4 Compartment Floor Box Plates



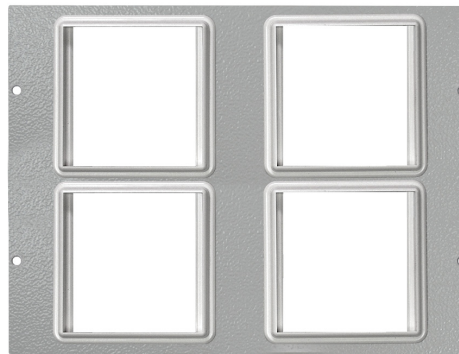
ST0290/SW/LH [2]
Left Hand Twin Switched Sockets
(side wired)



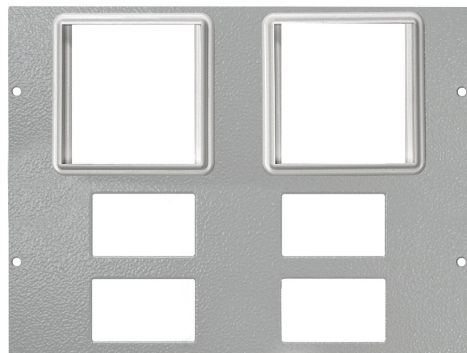
ST0290/SW/RH [2]
Right Hand Twin Switched Sockets
(side wired)



ST0285/2 [3]
Dual 4 x LJ6C Data Plate



ST0279/2 [1][3]
Dual 2 x 50mm Euro Module Plate



ST0279/285 [1][3]
2 x 50mm Euro Module &
4 x LJ6C Data Plate



ST0285/W2 [3]
Dual 4 x LJ6C Data Wave Plate



MM010WH
13A Standard Socket Module
To be used in conjunction with ST0279



MM038WH
5A Socket Module
To be used in conjunction with ST0279



MM020WH
16A Euro Socket Module
To be used in conjunction with ST0279

Product Information

Product Type
Cavity & Screed Floor Box Plates

Suitable For:
TFB4, TSB4

Plate Dimensions
185mm x 68mm

Material
Galvanised Steel

Finish
Leatherette texture Powder Coating

Colour
Equivalent to RAL7035 / Light Grey

Note [1]:
ST0279 is supplied fitted with 2 x 50x50mm Euro collars (see below), to be used in conjunction with listed Socket modules.



EURO COLLAR

Note [2]:
Side wired twin switched socket plates (ST0290/SW/LH & ST0290/SW/RH) are recommended for use with TFB4/64 cavity box and TSB4/65 screed box.

Note [3]:
Dual Euro and Data plates are designed for use with TFB4/80-RCD2 & TSB4/80-RCD2 floor boxes, however they are also compatible with 4 Compt floor boxes with depths of 80mm or greater