



BEVERAGE-AIR

| | |
|-----------------|------------|
| Project: _____ | AIA# _____ |
| Item: _____ | |
| Location: _____ | SIS# _____ |
| Approved: _____ | |

CHEF BASE REFRIGERATOR

MODEL:
WTRCS112HC-120

WTRCS112HC Six Drawer With Extended Top Chef Base
Hydrocarbon Series

WTRCS112HC CHEF BASE REFRIGERATOR

3 Year Parts/Labor Warranty
Additional 2 Year Compressor Warranty

CABINET CONSTRUCTION

- Stainless steel front, sides, drawers and grille (galvanized back & bottom)
- Interior liner is made of corrosion resistant aluminum
- 120" Extended top has full marine edge to prevent spills from dripping over sides
- Full electronic control
- One-piece, snap-in magnetic drawer gasket
- 12-Gauge stainless steel drawer slides with Delrin® rollers rated at 275 lbs
- Lifetime warranty on all drawers and slides
- Heavy duty, fire-proof, reinforced insulated 16 gauge top
- No heat shield required (must adhere to proper clearance per owners manual)
- Accommodates 6" deep full size food service pans (not included)
- Self-closing drawer feature
- Compressor available on left or right, specify at time of unit order
- 3" Casters, 2 with brakes standard



OPTIONS & ACCESSORIES

- Stainless steel back
- Stainless steel interior
- Additional pan supports
- 6" Adjustable legs, 6" seismic legs
- 6" Casters
- Gasket guards
- Flat top overhang
(up to 6" overhang on each side)
- Remote option*
(refrigerant must be specified at time of order, see note on back on page)

REFRIGERATION SYSTEM

- Uses environmentally friendly, energy efficient R290 refrigerant, and meets all regulatory requirements for CARB, SNAP, DOE & more
- Adaptive defrost
- Non-electric defrost with hot gas condensate evaporation
- Maintains product temperature 36°F to 38°F




Please verify qualifying units by visiting:
www.energystar.gov/cfs

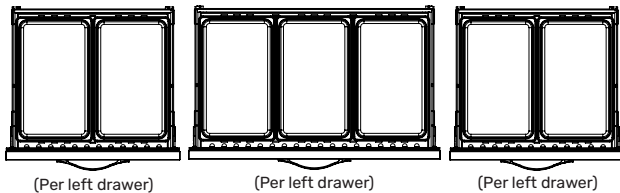
3779 Champion Blvd., Winston-Salem, NC 27105
1-888-845-9800 Fax: 1-336-245-6453
Beverage-Air.com Sales@bevair.com



BEVERAGE-AIR

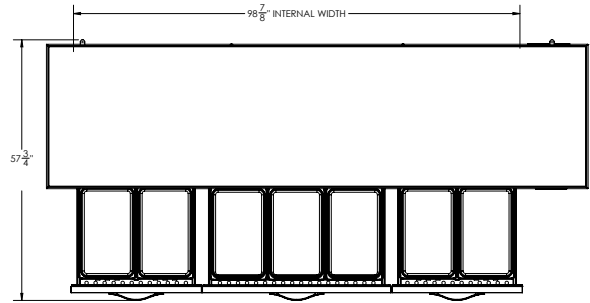
| MODEL | | WTRCS112HC-120 |
|--------------------------------------|--|--|
| EXTERNAL DIMENSIONAL DATA | | |
| Width Overall | | 120" |
| Depth Overall (with handle & bumper) | | 34 3/4" |
| Height Overall (with casters) | | 24 3/8" |
| Number of Drawers | | 6 |
| Depth with Drawers Extended | | 57 3/4" |
| Drawer Opening (in) | | (L) 27 3/8" x 6 1/2" (R) 40 3/8" x 6 1/2" |
| INTERNAL DIMENSIONAL DATA | | |
| NET Capacity (cubic ft.) | | 24.36 |
| Internal Width Overall (in) | | 98 7/8" |
| Internal Depth Overall (in) | | 26" |
| Internal Height Overall (in) | | 16 3/8" |
| ELECTRICAL DATA | | |
| Full Load Amperes | | 5.0 |
| REFRIGERATION DATA | | |
| Horsepower* | | 1/3 |
| Capacity (BTU/Hr)* | | 1997 |
| WEIGHT DATA | | |
| Gross Weight | | 850 lbs |
| Height - Crated | | 27" |
| Width - Crated | | 125" |
| Depth - Crated | | 38" |

*NOTE: Remote units are field wired and comes with 6" legs.
Refrigerant must be specified at time of order.

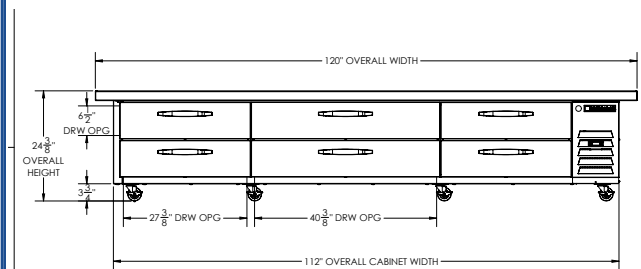


Chef Base Refrigerator Model: WTRCS112HC-120

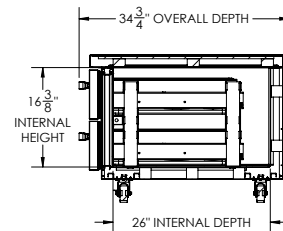
Model Views



PLAN VIEW



ELEVATION VIEW



SIDE VIEW

*ELECTRICAL CONNECTION



115/60/1
NEMA-5-15P

Units pre-wired at factory
and include 8' long cord
and plug set.



3779 Champion Blvd., Winston-Salem, NC 27105 1-888-845-9800 Fax: 1-336-245-6453 Beverage-Air.com Sales@bevair.com

an Ali Group Company



The Spirit of Excellence