



# BEVERAGE-AIR

|                 |      |
|-----------------|------|
| Project: _____  | AIA# |
| Item: _____     |      |
| Location: _____ | SIS# |
| Approved: _____ |      |

## CHEF BASE FREEZER

**MODEL:**  
**WTFCS84HC-89**

### WTFCS84HC Four Drawer With Extended Top Chef Base

**3 Year Parts/Labor Warranty**  
**Additional 2 Year Compressor Warranty**

#### CABINET CONSTRUCTION

- Stainless steel front, sides, drawers and grille (galvanized back & bottom)
- Interior liner is made of corrosion resistant aluminum
- 89" Extended top has full marine edge to prevent spills from dripping over sides
- Full electronic control
- One-piece, snap-in magnetic drawer gasket
- 12-Gauge stainless steel drawer slides with Delrin® rollers rated at 275 lbs
- Lifetime warranty on all drawers and slides
- Heavy duty, fire-proof, reinforced insulated 16 gauge top
- No heat shield required (must adhere to proper clearance per owners manual)
- Accommodates 6" deep full size food service pans (not included)
- Self-closing drawer feature
- Compressor available on left or right, specify at time of unit order
- 3" Casters, 2 with brakes standard



#### OPTIONS & ACCESSORIES

- Stainless steel back
- Stainless steel interior
- Additional pan supports
- 6" Adjustable legs, 6" seismic legs
- 6" Casters
- Gasket guards
- Flat top overhang  
(up to 6" overhang on each side)
- Remote option\*  
(refrigerant must be specified at time of order, see note on back on page)

#### REFRIGERATION SYSTEM

- Uses environmentally friendly, energy efficient R290 refrigerant, and meets all regulatory requirements for CARB, SNAP, DOE & more
- Adaptive defrost
- Non-electric defrost with hot gas condensate evaporation
- Maintains product temperature -10°F

**WTFCS84HC CHEF BASE FREEZER**



  
Please verify qualifying units by visiting:  
[www.energystar.gov/cfs](http://www.energystar.gov/cfs)

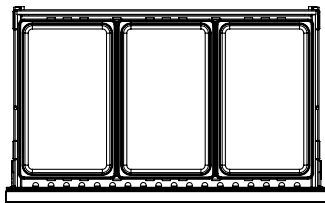
3779 Champion Blvd., Winston-Salem, NC 27105  
1-888-845-9800 Fax: 1-336-245-6453  
Beverage-Air.com Sales@bevair.com



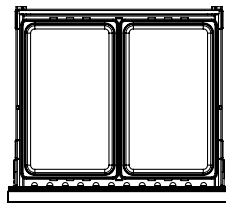
# BEVERAGE-AIR

| MODEL                                | WTFC84HC-89                                  |
|--------------------------------------|--|
| <b>EXTERNAL DIMENSIONAL DATA</b>     |  |
| Width Overall                        | 89"  |
| Depth Overall (with handle & bumper) | 34 3/4"                                      |
| Height Overall (with casters)        | 24 3/8"                                      |
| Number of Drawers                    | 4  |
| Depth with Drawers Extended          | 57 3/4"                                      |
| Drawer Opening (in)                  | (L) 40 3/8" x 6 1/2"<br>(R) 27 3/8" x 6 1/2" |
| <b>INTERNAL DIMENSIONAL DATA</b>     |  |
| NET Capacity (cubic ft.)             | 17.46  |
| Internal Width Overall (in)          | 70 7/8"                                      |
| Internal Depth Overall (in)          | 26"  |
| Internal Height Overall (in)         | 16 3/8"                                      |
| <b>ELECTRICAL DATA</b>               |  |
| Full Load Amperes                    | 6.50   |
| <b>REFRIGERATION DATA</b>            |  |
| Horsepower*                          | 3/4  |
| Capacity (BTU/Hr)*                   | 2312   |
| <b>WEIGHT DATA</b>                   |  |
| Gross Weight                         | lbs  |
| Height - Crated                      | "  |
| Width - Crated                       | "  |
| Depth - Crated                       | "  |

\*NOTE: Remote units are field wired and comes with 6" legs.  
Refrigerant must be specified at time of order.



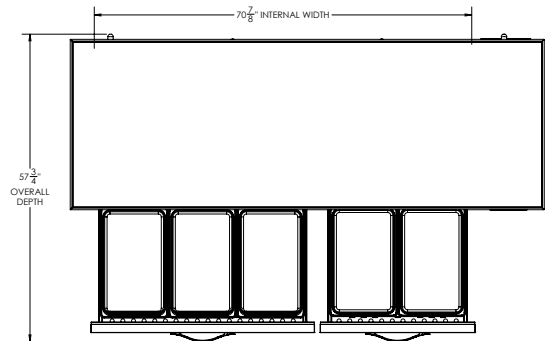
(Per left drawer)



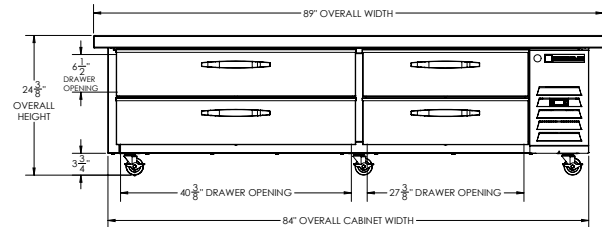
(Per right drawer)

## Chef Base Freezer Model: WTFC84HC-89

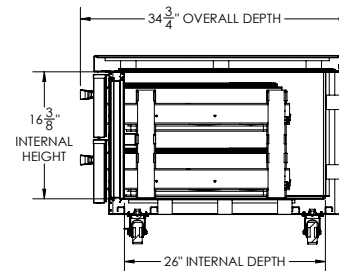
### Model Views



### PLAN VIEW



### ELEVATION VIEW



### SIDE VIEW



### \*ELECTRICAL CONNECTION

115/60/1  
NEMA-5-15P

Units pre-wired at factory  
and include 8' long cord  
and plug set.