



BEVERAGE-AIR

Project: _____

AIA#

Item: _____

Location: _____

SIS#

Approved: _____

UCRD UNDERCOUNTER REFRIGERATOR

UCR72AHC Six Drawer Model

Hydrocarbon Series

MODELS:

UCRD72AHC-6



UCRD72AHC-6

3 Year Parts/Labor Warranty
Additional 2 Year Compressor Warranty

CABINET CONSTRUCTION

- Stainless steel front, sides, top and drawers, (*galvanized back & bottom*)
- Interior liner is made of corrosion resistant aluminum
- Full electronic control
- Durable sub-top 1/2" insulated for added durability
- Magnetic gaskets attached to each drawer for positive seal
- Painted aluminum drawer handles
- 6" Casters, two (2) with brakes standard
- Stainless steel drawer frames supported on telescoping drawer slides
- Drawer slides include locking mechanism that prevents drawers from being inadvertently pulled off cabinet
- Refrigerators operates at 36°– 38°F for optimum food preservation

OPTIONS & ACCESSORIES

- Stainless steel back and grille
- Stainless steel interior
- Door and combination models available
- 6" Legs
- 3" Casters
- Low profile casters
- Remote option

REFRIGERATION SYSTEM

- Refrigeration system uses R290 refrigerant to comply with all environmental concerns
- Automatic, non-electric evaporator
- System is serviceable from rear
- Epoxy coated evaporator coil

UCRD72AHC-6 Undercounter Refrigerator: Food Prep Series



3779 Champion Blvd., Winston-Salem, NC 27105
1-888-845-9800 Fax: 1-336-245-6453
Beverage-Air.com sales@bevair.com

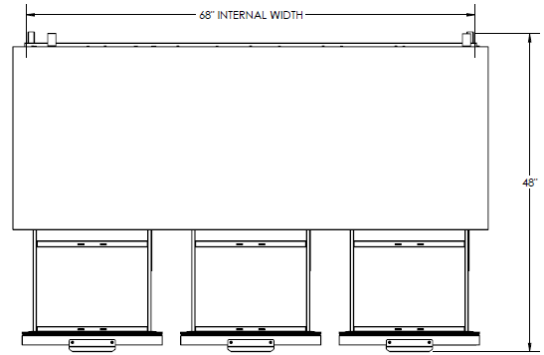


BEVERAGE-AIR

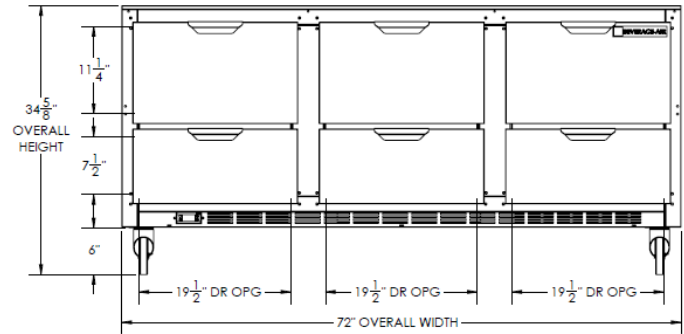
MODEL	UCRD72AHC-6
EXTERNAL DIMENSIONAL DATA	
Width Overall	72"
Depth Overall with Handles	32"
Height Overall with 6" Casters	34 5/8"
Number of Drawers	6
Depth with Drawers Open Extended	48"
Drawers Opening (in)	Upper 19 1/2"x 11 1/4" Lower 19 1/2"x 7 1/2"
INTERNAL DIMENSIONAL DATA	
NET Capacity (cubic ft.)	17.1
Internal Width Overall (in)	68"
Internal Depth Overall (in)	27 1/8"
Internal Height Front (in)	23"
Internal Height Rear (in)	16"
ELECTRICAL DATA	
Full Load Amperes 115/60/1	3
REFRIGERATION DATA	
Horsepower	1/5
Capacity (BTU/Hr)*	1350
WEIGHT DATA	
Gross Weight (Crated lbs)	424 lbs
Height - Crated	36"
Width - Crated	75"
Depth - Crated	33"

Undercounter Refrigerators Six Drawer Models Models: UCRD72AHC-6

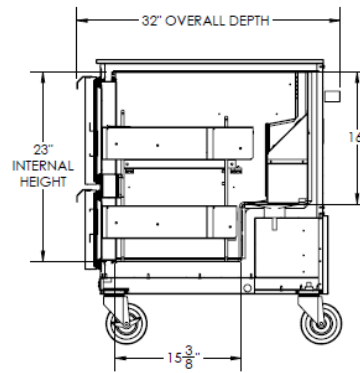
Model Views



Plan View



Elevation View



Side View

ELECTRICAL CONNECTION



115/60/1
NEMA-5-15P

Units pre-wired at factory and include 8' long cord and plug set.



an Ali Group Company



The Spirit of Excellence

3779 Champion Blvd., Winston-Salem, NC 27105
1-888-845-9800 Fax: 1-336-245-6453
Beverage-Air.com sales@bevair.com