

Making sense of energy

Visualisation of the energy used and energy costs is an important step in understanding the energy demands of a building and its users.

Increasing building users awareness of the energy they are using and the associated costs of that energy is an essential part of driving an energy reduction strategy. Furthermore, giving users access to see data in a clear and simple way, such as via public dashboards; empowers them to make a change to habits and to start to think about the energy they are using.

SIP+ Vision

SIP+ Vision provides the system portal through which multiple SIP+ EMT products can be connected and networked to provide a fully featured energy monitoring system.

Enhanced features and connectivity options are unlocked by installing Vision on a SIP+ EMT device, including a configurable public display option that includes energy graphs, financial calculations, energy and utility comparisons, energy performance, news feeds and weather information.

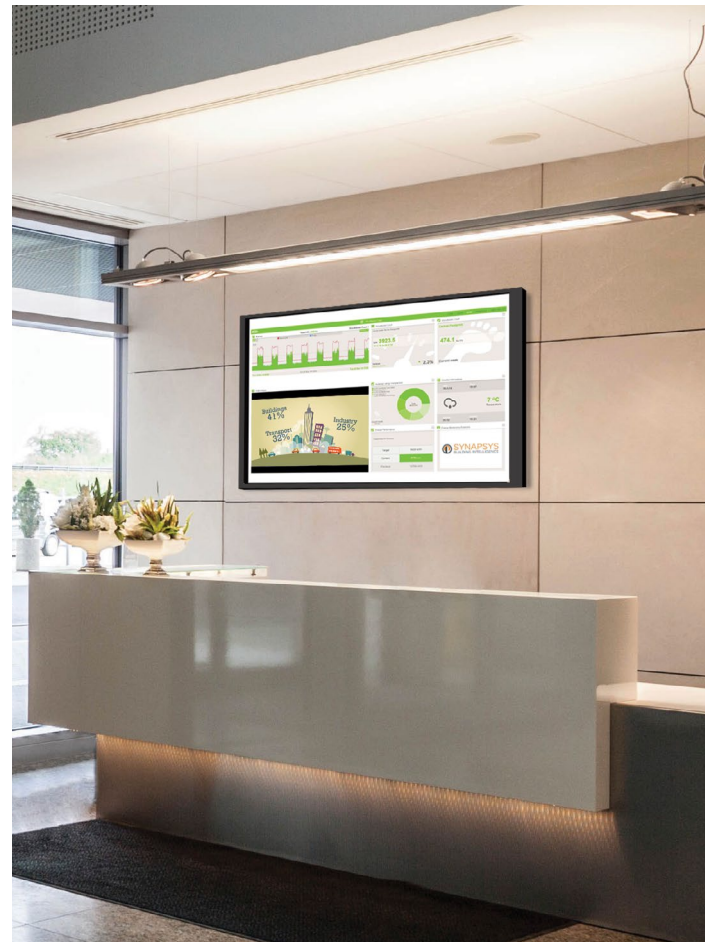
Why visualise building energy data?

- To gain visibility and control of your buildings systems
- Enable systems to work together intelligently
- Save energy through maximising the efficiency of systems
- Lower utility bills by reducing energy wastage
- Identify problems with plant and equipment earlier and minimise potential disruption to building users
- Visualise the energy generated by renewables

Commissioning and support

As with all Synapsys products and software solutions, SIP+ EMT Vision has been designed to be simple to deploy and use. We can provide training if required to both installers of the system and end users.

Our Commissioning engineers, Software and Technical support teams are available to support installation and set-up, right through to handover to the end user.



SIP+ EMT Vision at a glance

- Cost effective on site solution
- Customisable user dashboards
- Multiple user log ins
- No ongoing licence costs
- Data held on site
- Simple to use
- Easy to install and commission
- Comprehensive technical support
- Public dashboard display
- Simple to deploy and engineer, saving time and engineering cost

SIP+ EMT and the enhancements Vision unlocks

SIP+ EMT/ EMT IF

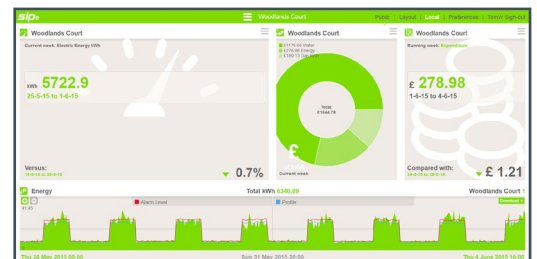
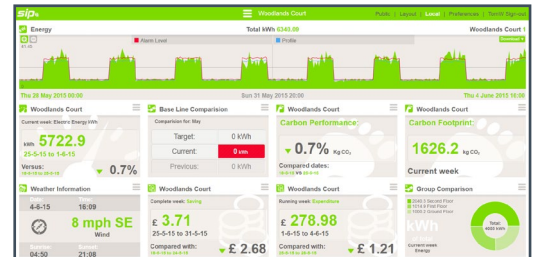
Define, collate and display energy data from a single network of Modbus or M-Bus meters, Data points monitored by a BMS such as Pulse meters, and or interface devices to a BMS.

SIP+ Vision

SIP Vision provides added functionality, networking of SIP+ devices and public display options.

Features

Energy data graphs	✓	✓
Comparison graphs		✓
Energy performance data	✓	✓
Dynamic web page scaling	✓	✓
Public display		✓
Configurable public display		✓
Financial calculations		✓
Group comparisons		✓
Energy		✓
Video player		✓
Baseline comparison		✓
Image display		✓
Utility performance		✓
Data value display		✓
Carbon footprint		✓
Carbon performance		✓
News feed		✓
Weather data		✓
Sunrise/Sunset data		✓
Network time settings		✓
Alarms displayed	✓	✓
Alarm setting & adjusting	✓	✓
Email exception reports	✓	✓
Manual CSV data download	✓	✓
Scheduled download to FTP	✓	✓
MySQL Connection 3rd party	✓	✓
Scheduled CSV reports	✓	✓
Interface to Trend	✓	
Interface to BACnet	✓	
Data points from Trend	✓	
Data points from BACnet	✓	
Meter grouping single SIP+ / SIP	✓	✓
Meter grouping multiple SIP+ / SIP's		✓



For more information about Synapsys and our product range please visit www.synapsys-solutions.com.

Alternatively to speak with one of our team in more detail or to arrange a demonstration of our products and solutions, please contact us on 01444 246 128 and we will be happy to discuss your requirements.

© 2018, Synapsys Solutions Ltd, All rights reserved.

Synapsys Solutions Ltd
No. 1 Woodlands Court, Albert Drive,
Burgess Hill, West Sussex, RH15 9TN

T: 01444 246 128
E: enquiries@synapsys-solutions.com
W: www.synapsys-solutions.com

 **SYNAPSYS**
BUILDING INTELLIGENCE