



WDE-K50

Woltmann type pre-equipped for inductive modules

The WDE-K50 is a horizontal Woltmann with a removable insert and sealed counter mechanism with a magnetic transmission.

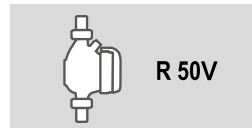
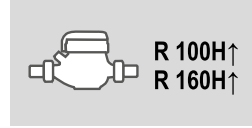
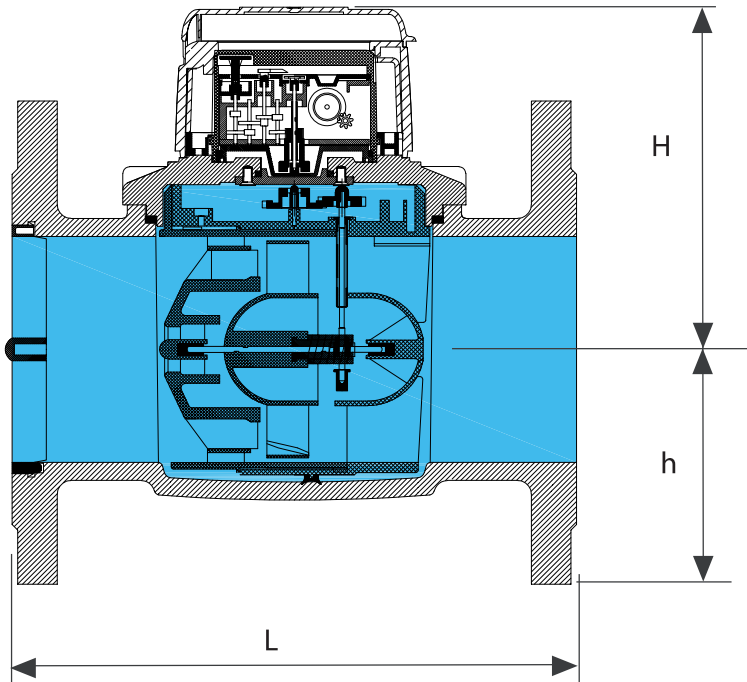
Inductive pre-equipment for the installation of M-Bus Wired and Wireless OMS data communication modules, non-magnetic pulse output and, upon request, LoRa & NB-IoT.



TECHNICAL FEATURES

	Size	DN	mm (in)	15 (1/2")	15 (1/2")	20 (3/4")	15 (1/2")	15 (1/2")	20 (3/4")	20 (3/4")
	Overload flow rate	Q ₄	m ³ /h	50	78.75	125	200	200	312.5	500
	Permanent flow rate	Q ₃	m ³ /h	40	63	100	160	160	250	400
R=100H ↑	Transitional flow rate	Q ₂	m ³ /h	0.64	1.008	1.6	2.56	2.56	4.0	6.4
	Min flow rate	Q ₁	m ³ /h	0.40	0.63	1.00	1.60	1.60	2.5	4.0
R=160H ↑	Transitional flow rate	Q ₂	m ³ /h	0.256	0.403	0.64	1.024	1.024	1.60	2.56
	Min flow rate	Q ₁	m ³ /h	0.16	0.252	0.40	0.64	0.64	1.00	1.60
	Min reading		l			0.5			5	
	Max reading		m ³			999,999			9,999,999	
	Max pressure loss at Q3		bar	0.25	0.40	0.25	0.40	0.40	0.16	0.40
	Max admissible pressure MAP		bar				16			

DIMENSIONS & WEIGHTS



Size	mm (in)	50 (2")	65 (2" 1/2)	80 (3")	100 (4")	125 (5")	150 (6")	200 (8")
L	mm	200	200	225	250	250	300	350
H	mm	130	130	152	152	152	181	181
h	mm	78	86	95	104	117	133	162
Weight	Kg	8.5	9.5	13.5	15	18	30.5	43



DESIGNING, PRODUCING AND DISTRIBUTING SOLUTIONS FOR OVER 25 YEARS

B METERS is an Italian company that has been designing, producing and distributing instruments and solutions for measuring the consumption of water and thermal energy used for heating and cooling, for over 25 years.

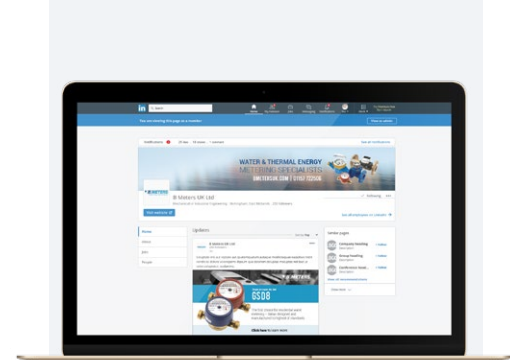
The yearly production currently exceeds 1,800,000 units, putting B METERS in a leading position both at national and European level.

The product range includes turbine (velocity) type single and multi-jet water meters with mechanical or magnetic transmission, Woltmann meters, irrigation meters, flow meters, thermal energy meters and heat cost allocators with direct reading, or complete with integrated modules for the remote transmission of the consumption data.



EN 1434

EN 834



**FOLLOW BMETERS ON LINKEDIN,
KEEP UP-TO-DATE WITH ALL
LATEST NEWS AND PRODUCT
INFORMATION**

THE BMETERS RANGE



WATER METERS



THERMAL ENERGY METERS



READING SYSTEMS



M-BUS SOLUTIONS

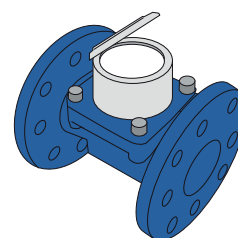
mod.

IWM-MB4

Wired M-BUS module
for Woltmann meters with inductive interface



Compatible water meters



mod. **WDE-K50**

The IWM-MB4 is suitable for remote reading applications in a commercial and industrial context. This M-BUS module allows the meter consumption data collecting by using the standard Wired M-BUS protocol, historically developed for remote meters reading.

The use of an inductive target into the meter dial excludes the possibility of magnetic fraud and makes the application insensitive to the pipes vibrations.

The IWM-MB4 is compatible with all the pre-equipped Woltmann meters and provides:

- Consumption analysis with reverse flow compensation.
- Fraud detection (removal of the module, external magnetic field tampering, reverse flow, water leakage). All the alarms are recorded and reported into the M-BUS telegram sent by the module.
- IP68 protection* allows the installation of the module even in harsh environments.
- NFC interface allows configuration and commissioning of the device with the use of a simple smartphone app.

Protocol	MBUS EN13757-2\3
Cable length	1.5 meters
Compatible water meters	WDE-K50
Sensitivity measure	10 liters (up to DN125) or 100 liters (from DN150)
Reverse flow	Activate for the backward flow amount after user-settable threshold
Energy supply	Non-replaceable lithium battery, rechargeable (automatic recharge from the BUS network). Backup for measuring function in absence of BUS voltage
Transmitted data	Volume (consumption), alarms
Alarms	Discharged battery, module removal, magnetic fraud attempt, backward flow, leakage detection.
Protection class	IP68*
Weight	151 g
Size (l x p x h, cable excluded)	100 x 100 x 25 mm
Working Temperature	+1° / +55°C
Module programming requirements	<ul style="list-style-type: none">• Android device (smartphone, tablet, etc.) with an NFC interface and the NFC IWM Config APP freely downloadable from GOOGLE PLAY.• Any M-BUS level converter and Windows PC with B M-BUS software installed (or other M-BUS softwares**).

* IP68: maximum 24 hours of continuous submersion at 1 m depth

**Ask to your dealer about the software compatibility.