

GSD8-1

Single jet, dry dial water meter, with a direct reading across 8 numeric dials

Single jet, super dry dial water meter, with a direct reading across 8 numeric rolls.

Produced in cold water (50°C) and hot water (90°C) versions in 15mm and 20mm diameters, this compact meter comes with a full-360° rotating dial for ease of reading.

Inductive pre-equipment for the installation of data communication modules M-BUS wired, wireless OMS and upon request LoRa & NB-IoT. (Modules available from summer 2020)



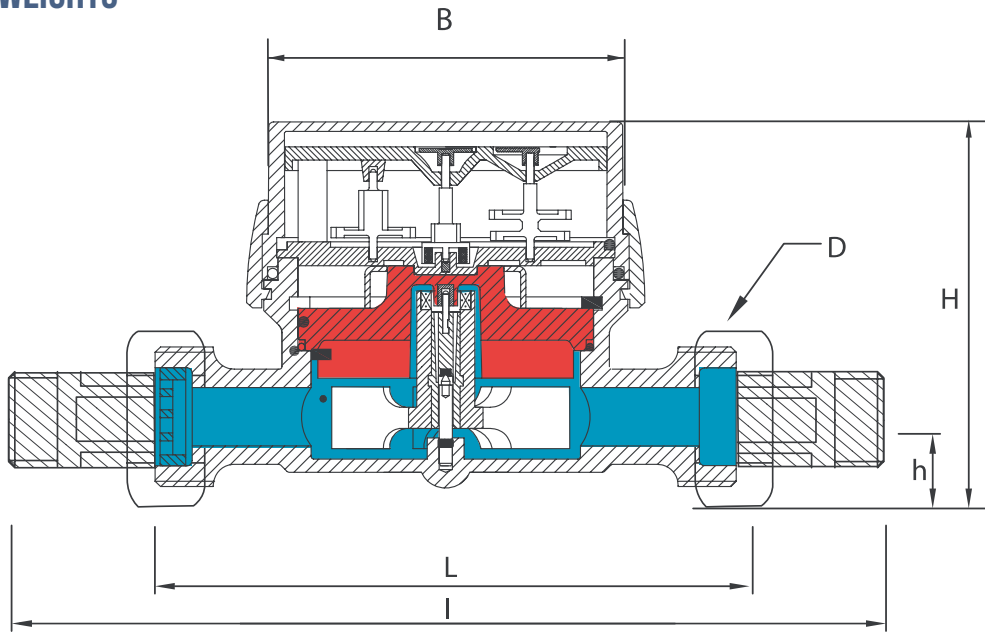
TECHNICAL FEATURES

Size	DN	mm (in)	15 (1/2")	15 (1/2")	20 (3/4")
Overload flow rate	Q ₄	m ³ /h	2	3.12	5
Permanent flow rate	Q ₃	m ³ /h	1.6	2.5	4
Transitional flow rate	Q ₂	l/h	25.6	40	64
Min flow rate	Q ₁	l/h	16	25	40
Transitional flow rate	Q ₂	l/h	16	25	40
Min flow rate	Q ₁	l/h	10	15.63	25
Min reading		l		0.05	
Max reading		m ³		99,999	
Max admissible pressure MAP		bar		16	

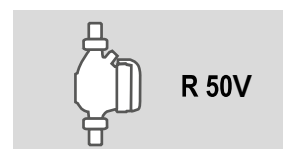
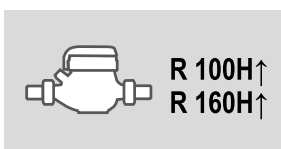
R=100H↑

R=160H↑

DIMENSIONS & WEIGHTS



Size	mm (in)	15 (1/2")	20 (3/4")	25 (1")	32 (1 1/4")
L	mm	80	110	115	130
I	mm	160	190	195	228
H	mm	73	73	73	73
h	mm	18	18	18	18
B	mm	74	74	74	74
D*	in	3/4	3/4	7/8 - 3/4	1
Weight	with unions Kg	0.60	0.65	0.70	0.85
	without unions Kg	0.45	0.50	0.55	0.60



DESIGNING, PRODUCING AND DISTRIBUTING SOLUTIONS FOR OVER 25 YEARS

B METERS is an Italian company that has been designing, producing and distributing instruments and solutions for measuring the consumption of water and thermal energy used for heating and cooling, for over 25 years.

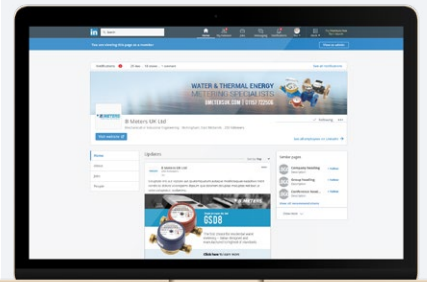
The yearly production currently exceeds 1,800,000 units, putting B METERS in a leading position both at national and European level.

The product range includes turbine (velocity) type single and multi-jet water meters with mechanical or magnetic transmission, Woltmann meters, irrigation meters, flow meters, thermal energy meters and heat cost allocators with direct reading, or complete with integrated modules for the remote transmission of the consumption data.



EN 1434

EN 834



**FOLLOW BMETERS ON LINKEDIN,
KEEP UP-TO-DATE WITH ALL
LATEST NEWS AND PRODUCT
INFORMATION**

THE BMETERS RANGE



WATER METERS



THERMAL ENERGY METERS



READING SYSTEMS



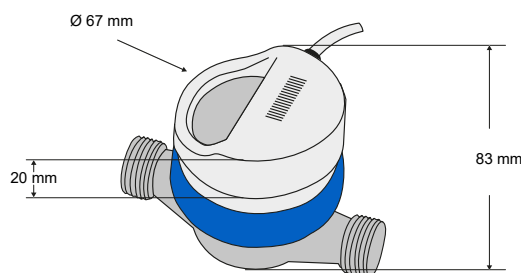
M-BUS SOLUTIONS

Mod.

RFM-MB1

Modulo M-BUS via cavo per contatori d'acqua
Wired M-BUS module for water meters

M-Bus



Descrizione:

Il modello RFM-MB1 è un modulo M-BUS per la trasmissione dei consumi applicabile alla serie dei contatori d'acqua a getto singolo GSD8-RFM prodotti da B METERS.

Di facile installazione e configurazione, è stato progettato con componenti a bassissimo consumo e con particolari algoritmi di risparmio energetico.

Oltre al consumo attuale, permette di rilevare diversi tentativi di frode ai danni del contatore, eccesso della portata di lavoro e di segnalare se nell'impianto a valle del contatore è presente una perdita.

Description:

The RFM-MB1 is a wired M-BUS module suitable for the data transmission of the water consumption applicable to the single jet GSD8-RFM produced by B METERS.

Easy to install and configure, it is designed with ultra-low power consumption components and special algorithms for energy savings.

In addition to the current consumption, it can detect several fraud attempts against the meters, maximum flow rate exceeded and plumbing system downstream leakage.

Caratteristiche tecniche

Trasmissione del dato	MBUS Via Cavo EN13757-2/3
Alimentazione	Alimentato da rete Bus (+ Batteria 3 V Litio)
Durata Batteria	Senza alimentazione da Bus: 1 anno*
Sensibilità della misura	1 litro
Dimensioni e peso	20x67x67 (AxLxP in mm) 73 g
Lunghezza cavo	2 m
Portata	A seconda del Master M-BUS
Temperatura di esercizio	da +1°C a +55°C
Grado di protezione	IP65
Dati trasmessi	Volume (consumo), allarmi
Allarmi	Batteria scarica, Rimozione modulo, Tentata frode magnetica, Superamento Qmax, Eccesso flusso inverso, Rilevazione perdita nell'impianto

* in condizioni ambientali ottimali

Technical features

Data Transmission	Wired MBUS EN13757-2/3
Power Supply	Bus power supply (+ 3V Lithium Battery)
Battery Life	Without Bus power supply: 1 year*
Measure Sensibility	1 liter
Dimensions (HxLxP) and weight	20x67x67 73 g
Cable length	2 m
Coverage	Depending on M-BUS Master
Working Temperature	from +1°C to +55°C
Protection class	IP65
Transmitted Data	Volume (consumption), Alarms
Alarms	Discharged battery, Module removal, Magnetic fraud attempt, Max flow rate overlapping, Backward flow, Leakage detection.

* Under ideal environmental conditions