

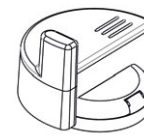


GMDM-I

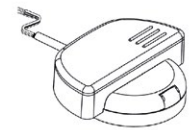
Multi jet super-dry pre-equipped for remote reading modules

The GMDM-I is a multi-jet, dry dial magnetic transmission water meter with a 360° rotating lid.

Inductive pre-equipment for the installation of data communication modules come standard; M-Bus Wired and Wireless OMS, and non-magnetic pulse output. LoRa and NB-IoT are available upon request.



M-Bus
mod. IWM-TX3

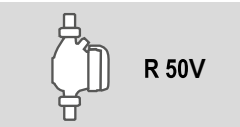
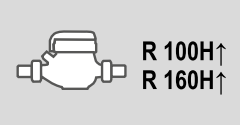
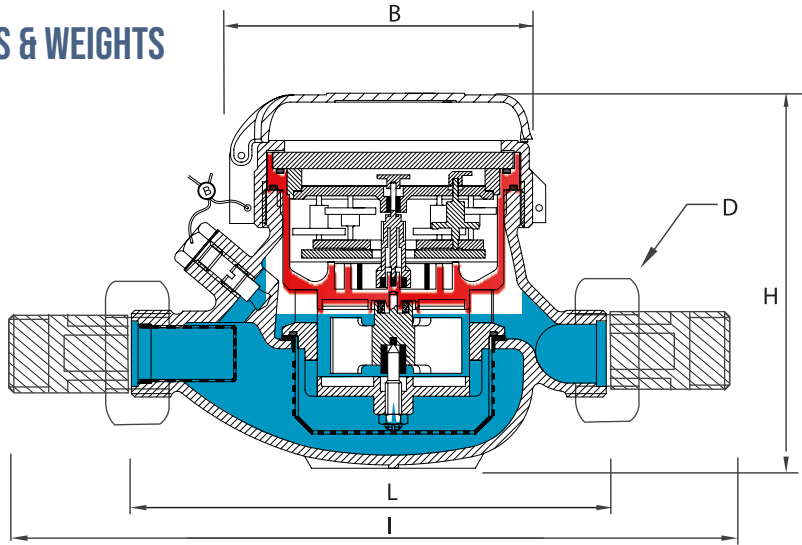


M-Bus PULSE
mod. IWM-MB3 mod. IWM-PL3

TECHNICAL FEATURES

	Size	DN	mm (in)	15 (1/2")	15 (1/2")	20 (3/4")	20 (3/4")	20 (3/4")	20 (3/4")
	Overload flow rate	Q ₄	m ³ /h	3.125	6	7.875	12.5	20	31.25
	Permanent flow rate	Q ₃	m ³ /h	2.5	4	6.3	10	16	25
R=100H↑	Transitional flow rate	Q ₂	l/h	40	64	100.8	160	256	400
	Min flow rate	Q ₁	l/h	25	40	63	100	160	250
R=160H↑*	Transitional flow rate	Q ₂	l/h	25	40	63	100	160	250
	Min flow rate	Q ₁	l/h	15.63	25	39.38	62.5	100	156.25
	Sensitivity		l/h	6	6	10	10	20	20
	Min reading		l	0.05	0.05	0.05	0.05	0.05	0.05
	Max reading		m ³			99,999			
	Max admissible pressure MAP		bar	16	16	16	16	16	16

DIMENSIONS & WEIGHTS



Size	mm (in)	15 (1/2")	20 (3/4")	25 (1")	32 (1 1/4")	40 (1 1/2")	50 (2")
L	mm	145-165-190	190	260	260	300	300
I	mm	225-245-270	290	360	380	440	460
H	mm	109	111	117	117	153	172
B	mm	100	100	104	104	126	160
D*	in	3/4"	1"	1 1/4"	1 1/2"	2"	2 1/2"
Weight	Kg	1.18 1.41	1.4	2.09	2.18	4.38	4.46 9.40



DESIGNING, PRODUCING AND DISTRIBUTING SOLUTIONS FOR OVER 25 YEARS

B METERS is an Italian company that has been designing, producing and distributing instruments and solutions for measuring the consumption of water and thermal energy used for heating and cooling, for over 25 years.

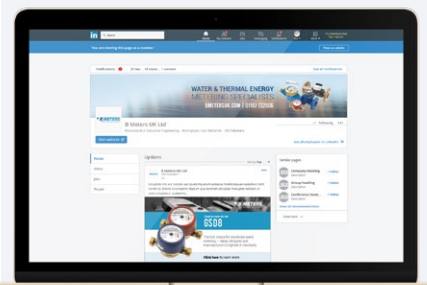
The yearly production currently exceeds 1,800,000 units, putting B METERS in a leading position both at national and European level.

The product range includes turbine (velocity) type single and multi-jet water meters with mechanical or magnetic transmission, Woltmann meters, irrigation meters, flow meters, thermal energy meters and heat cost allocators with direct reading, or complete with integrated modules for the remote transmission of the consumption data.



EN 1434

EN 834



**FOLLOW BMETERS ON LINKEDIN,
KEEP UP-TO-DATE WITH ALL
LATEST NEWS AND PRODUCT
INFORMATION**

THE BMETERS RANGE



WATER METERS



THERMAL ENERGY METERS



READING SYSTEMS



M-BUS SOLUTIONS

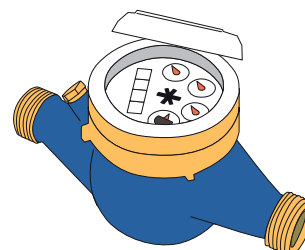
mod.

IWM-TX3

Wireless M-BUS OMS module
for multi jet meters with inductive interface



Compatible water meters



mod. **GMDM-I**
mod. **GMB-RP-I**
mod. **GMB-I**

IWM-TX3 has been designed to allow wireless remote reading in different types of applications from the residential sector to the commercial and industrial sectors. The radio module thanks to the presence of the inductive target into the meter dial allows the reading of the volume consumption without any constraints of access to the site in walk-by mode or AMR (automatic meter reading), in respect of the WMBUS standard and complying with the OMS (Open metering system) specification.

- Consumption analysis with reverse flow compensation that provides an always perfect alignment between the totalizer and the meter.
- Fraud control (removal of the radio module, application of external magnetic field, reverse flow, identification of system loss). Magnetic tampering to the meter and removal are recorded and reported to the receiving system via radio transmission. The presence of reverse flow is recorded in an additional register that allows to calculate the amount of water passed in reverse. The loss function can be monitored at the time of reading or by the AMR system if a timely update is desired.
- IP68 protection* allows the use of the module also for meters installed in difficult environments.
- NFC interface allows configuration and commissioning of the device with the use of a simple smartphone app.

Radio interface	WMbus EN13757-4 @868 MHz ≤ 25 mW, mode T1
Coverage	500 meters*
Compatible water meters	GMDM-I, GMB-RP-I, GMB-I
Pulse output minimum value (K)	1 liter
Configuration	Via radio (with RFM-RX2 and software B Metering), NFC (with Android app)
Energy supply	Non-replaceable lithium battery, maximum lifetime 10 years**
Protection class	IP68***
Weight	124 g
Size (l x p x h)	88 x 75 x 60 mm
Working Temperature	+1° / +55°C
Transmitted data	Volume (consumption), total of backward flow, 12 monthly historical values, battery status, alarms.
Alarms	Discharged battery, module removal, magnetic fraud attempt, backward flow, leakage detection.
Module programming requirements	<ul style="list-style-type: none"> • Android device (smartphone, tablet, etc.) with an NFC interface and the NFC IWM Config APP freely downloadable from GOOGLE PLAY • RFM-RX2 receiver and Windows PC with B Metering software installed

* In optimal signal transmission conditions

** The battery life strongly depends on the working time window, set during the configuration process, and on the environmental conditions

*** IP68: maximum 24 hours of continuous submersion at 1 m depth