

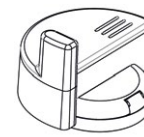


GMDM-I

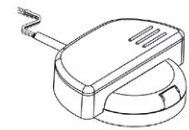
Multi jet super-dry pre-equipped for remote reading modules

The GMDM-I is a multi-jet, dry dial magnetic transmission water meter with a 360° rotating lid.

Inductive pre-equipment for the installation of data communication modules come standard; M-Bus Wired and Wireless OMS, and non-magnetic pulse output. LoRa and NB-IoT are available upon request.



M-Bus
mod. IWM-TX3

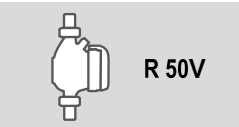
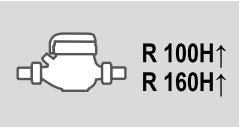
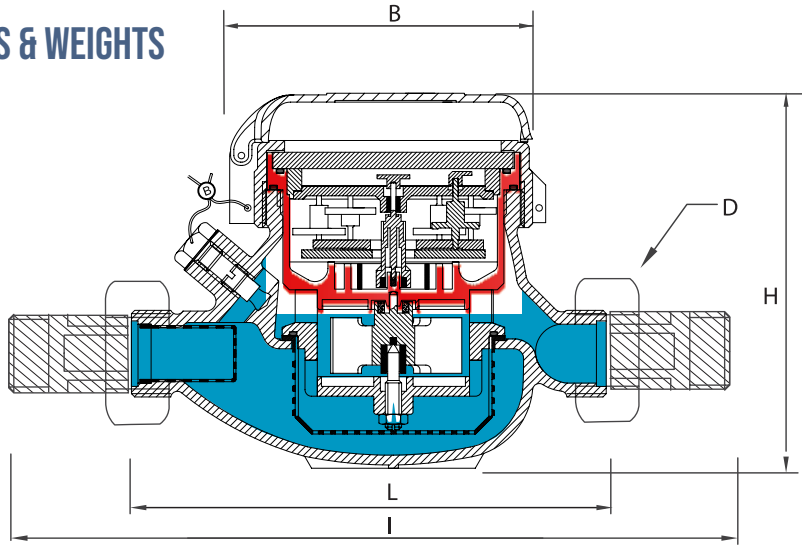


M-Bus PULSE
mod. IWM-MB3 mod. IWM-PL3

TECHNICAL FEATURES

	Size	DN	mm (in)	15 (1/2")	15 (1/2")	20 (3/4")	20 (3/4")	20 (3/4")	20 (3/4")
R=100H↑	Overload flow rate	Q ₄	m ³ /h	3.125	6	7.875	12.5	20	31.25
	Permanent flow rate	Q ₃	m ³ /h	2.5	4	6.3	10	16	25
	Transitional flow rate	Q ₂	l/h	40	64	100.8	160	256	400
	Min flow rate	Q ₁	l/h	25	40	63	100	160	250
R=160H↑*	Transitional flow rate	Q ₂	l/h	25	40	63	100	160	250
	Min flow rate	Q ₁	l/h	15.63	25	39.38	62.5	100	156.25
	Sensitivity		l/h	6	6	10	10	20	20
	Min reading		l	0.05	0.05	0.05	0.05	0.05	0.05
	Max reading		m ³			99,999			
	Max admissible pressure MAP		bar	16	16	16	16	16	16

DIMENSIONS & WEIGHTS



Size	mm (in)	15 (1/2")	20 (3/4")	25 (1")	32 (1 1/4")	40 (1 1/2")	50 (2")
L	mm	145-165-190	190	260	260	300	300
I	mm	225-245-270	290	360	380	440	460
H	mm	109	111	117	117	153	172
B	mm	100	100	104	104	126	160
D*	in	3/4"	1"	1 1/4"	1 1/2"	2"	2 1/2"
Weight	Kg	1.18 1.41	1.4	2.09	2.18	4.38	4.46 9.40



DESIGNING, PRODUCING AND DISTRIBUTING SOLUTIONS FOR OVER 25 YEARS

B METERS is an Italian company that has been designing, producing and distributing instruments and solutions for measuring the consumption of water and thermal energy used for heating and cooling, for over 25 years.

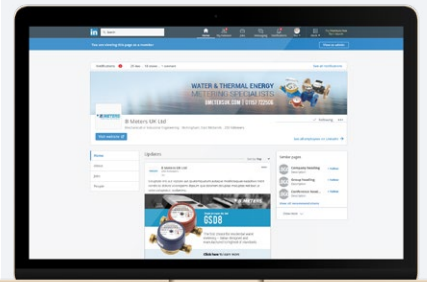
The yearly production currently exceeds 1,800,000 units, putting B METERS in a leading position both at national and European level.

The product range includes turbine (velocity) type single and multi-jet water meters with mechanical or magnetic transmission, Woltmann meters, irrigation meters, flow meters, thermal energy meters and heat cost allocators with direct reading, or complete with integrated modules for the remote transmission of the consumption data.



EN 1434

EN 834



**FOLLOW BMETERS ON LINKEDIN,
KEEP UP-TO-DATE WITH ALL
LATEST NEWS AND PRODUCT
INFORMATION**

THE BMETERS RANGE



WATER METERS



THERMAL ENERGY METERS



READING SYSTEMS



M-BUS SOLUTIONS

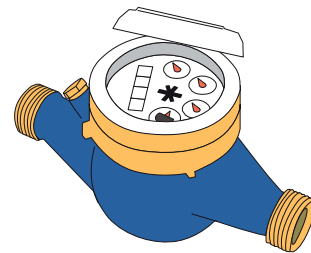
mod.

IWM-MB3

Wired M-BUS module
for multi let water meters with inductive interface



Compatible water meters



mod. **GMDM-I**
mod. **GMB-RP-I**
mod. **GMB-I**

The IWM-MB3 is suitable for remote reading applications in a residential, commercial and industrial context. This M-BUS module allows the meter consumption data collecting by using the standard Wired M-BUS protocol, historically developed for remote meters reading.

The use of an inductive target into the meter dial excludes the possibility of magnetic fraud and makes the application insensitive to the pipes vibrations.

The IWM-MB3 is compatible with all the pre-equipped multiple jet meters (wet, semi-dry and dry dial) and provides:

- Consumption analysis with reverse flow compensation.
- Fraud detection (removal of the module, external magnetic field tampering, reverse flow, water leakage). All the alarms are recorded and reported into the M-BUS telegram sent by the module.
- IP68 protection* allows the installation of the module even in harsh environments.
- NFC interface allows configuration and commissioning of the device with the use of a simple smartphone app.

Protocol	MBUS EN13757-2\3
Cable length	1.5 meters
Compatible water meters	GMDM-I, GMB-RP-I, GMB-I
Sensitivity measure	1 liter
Reverse flow	Activate for the backward flow amount after user-settable threshold
Energy supply	Non-replaceable lithium battery, rechargeable (automatic recharge from the BUS network). Backup for measuring function in absence of BUS voltage
Transmitted data	Volume (consumption), alarms
Alarms	Module removal, magnetic fraud attempt, backward flow, leakage detection.
Protection class	IP68*
Weight	122 g
Size (l x p x h, cable excluded)	88 x 69 x 28 mm
Working Temperature	+1° / +55°C
Module programming requirements	<ul style="list-style-type: none">• Android device (smartphone, tablet, etc.) with an NFC interface and the NFC IWM Config APP freely downloadable from GOOGLE PLAY.• Any M-BUS level converter and Windows PC with B M-BUS software installed (or other M-BUS softwares**).

* IP68: maximum 24 hours of continuous submersion at 1 m depth

**Ask to your dealer about the software compatibility.