

# DRUMQUIK PRO / DRUMQUIK PUR ACCESSORIES

## Color Coding and Keying Options

### • COLORED KEY KITS FOR PHYSICAL CODING: POLYETHYLENE

DQPRO PART NUMBER	DQPUR PART NUMBER	DESCRIPTION
DQPROKEYCPGRY00	DQPURKEYCPGRY00	Key kit for coupler, gray
DQPROKEYCPRED01	DQPURKEYCPRED01	Key kit for coupler, red
DQPROKEYCPYEL02	DQPURKEYCPYEL02	Key kit for coupler, yellow
DQPROKEYCPGRN03	DQPURKEYCPGRN03	Key kit for coupler, green
DQPROKEYCPBRN04	DQPURKEYCPBRN04	Key kit for coupler, brown
DQPROKEYCPBLU05	DQPURKEYCPBLU05	Key kit for coupler, blue
DQPROKEYCPBLK99	DQPURKEYCPBLK99	Key kit for coupler, black
DQPROKEYCPCOMBO	DQPURKEYCPCOMBO	One of every coupler key ring and cap
<i>Key kits for coupler include coupler key ring and cap.</i>		
DQPROKEYDIRED01	DQPURKEYDIRED01	Key kit for drum insert, red
DQPROKEYDIYEL02	DQPURKEYDIYEL02	Key kit for drum insert, yellow
DQPROKEYDIGRN03	DQPURKEYDIGRN03	key kit for drum insert, green
DQPROKEYDIBRN04	DQPURKEYDIBRN04	Key kit for drum insert, brown
DQPROKEYDIBLU05	DQPURKEYDIBLU05	Key kit for drum insert, blue
DQPROKEYDIBLK99	DQPURKEYDIBLK99	Key kit for drum insert, black
DQPROKEYDICOMBO	DQPURKEYDICOMBO	One of every drum insert key ring and button plug
<i>Key kits for drum insert include drum insert key ring and button plug.</i>		

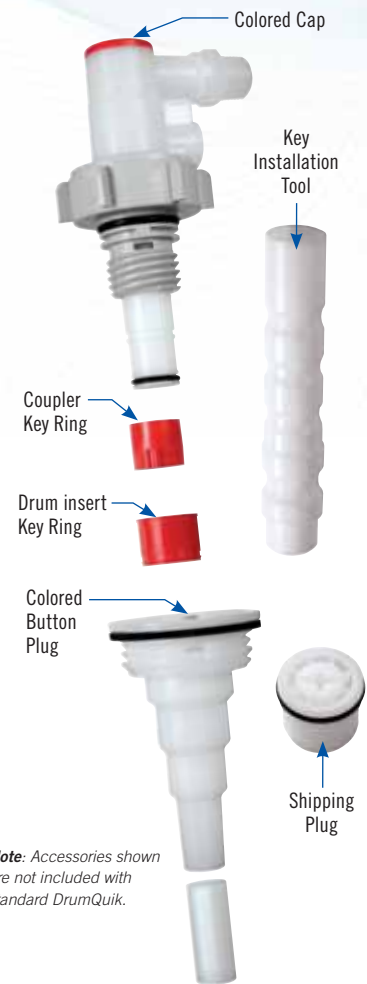
## Color Coded Parts

### • COLORED CAPS & BUTTON PLUGS FOR VISUAL CODING: POLYETHYLENE

PART NUMBER	DESCRIPTION
DQPROCAPGRY00	Colored cap for coupler, gray
DQPROCAPRED01	Colored cap for coupler, red
DQPROCAPYEL02	Colored cap for coupler, yellow
DQPROCAPGRN03	Colored cap for coupler, green
DQPROCAPBRN04	Colored cap for coupler, brown
DQPROCAPBLU05	Colored cap for coupler, blue
DQPROCAPBLK99	Colored cap for coupler, black
DQPROCAPCOMBO	One each of every color cap
DQPROPLUGGRY00	Colored button plug for drum insert, gray
DQPROPLUGRED01	Colored button plug for drum insert, red
DQPROPLUGYEL02	Colored button plug for drum insert, yellow
DQPROPLUGGRN03	Colored button plug for drum insert, green
DQPROPLUGBRN04	Colored button plug for drum insert, brown
DQPROPLUGBLU05	Colored button plug for drum insert, blue
DQPROPLUGBLK99	Colored button plug for drum insert, black
DQPROPLUGCOMBO	One each of every color plug

**Note:** Colored caps and button plugs can be used with both DrumQuik PRO and DrumQuik PUR.

## DrumQuik® PRO & PUR Key Kits



**Note:** Accessories shown are not included with standard DrumQuik.

## Color Coding



# DRUMQUIK PRO / DRUMQUIK PUR ACCESSORIES

## Tools



1 Fully press dip-tube into drum insert socket.



2 Place the drum insert assembly in drum.



3 Turn shipping plug counterclockwise to remove. (Use a large, flat blade or #4 Phillips screwdriver.)



4 Insert coupler into drum insert assembly.



5 Turn the coupler locking ring clockwise until stop is reached (approximately 2 full turns); valve is opened during this process.

PART NUMBER	DESCRIPTION
2408900	Torque socket tool (blue, glass-filled nylon)
2479100	Bung wrench (aluminum)
2375600	Key installation tool for key kits (Shipping plug may also be used to install keys)
DQPURFT08	Flaring Tool, 1/2" tubing
DQPURFT12	Flaring Tool, 3/4" tubing

## Sample Kits (Includes one coupler, one insert and one dip-tube)

PART NUMBER	DESCRIPTION
DQPRONASAMP	2" Buttress drum insert, 905mm dip-tube, 1/2 NPT coupler (EPDM O-rings, 316 SST spring in coupler)
DQPRONASAMP207	2" Buttress drum insert, 905mm dip-tube, 1/2 NPT coupler (FKM seals & Hastelloy® C spring in coupler)
DQPROEUSAMP	BSC 56x4 drum insert, 905mm dip-tube, 3/4 BSPP coupler (EPDM seals, 316 SST spring in coupler)
DQPROEUSAMP207	BSC 56x4 drum insert, 905mm dip-tube, 3/4 BSPP coupler (FKM seals & Hastelloy® C spring in coupler)
DQPRONPSSTSAMP	2" NPS (ISO G2) drum insert, 905mm dip-tube, 1/2 NPT coupler (EPDM Bung O-rings, 316 SST spring in coupler)
DQPRONPSSTSAMP207	2" NPS (ISO G2) drum insert, 905mm dip-tube, 1/2 NPT coupler (FKM seals & Hastelloy® C spring in coupler)
DQPRONPSLSAMP	2" NPS (ISO G2) drum insert, 905mm dip-tube, 1/2 NPT coupler (EPDM Flat Gasket, 316 SST Spring)
DQPRONPSLSAMP207	2" NPS (ISO G2) drum insert, 905mm dip-tube, 1/2 NPT coupler (FKM seals & Hastelloy® C spring in coupler)
DQPURSAMP202	Kit includes 1 Coupler (DQPUR 12 0112 (PEEK® & FKM) & 1 assembled Dip-tube (DQPUR 2BUT 0985 202)
DQPURSAMP209	Kit includes 1 Coupler (DQPUR 12 0112 209 (PPS & Simriz®) & 1 Dip-tube assy. (DQPUR 2BUT 0985 202)

## Shipping Plugs

PART NUMBER	DESCRIPTION
DQPROPUMPAD	Internal 3/4 NPT Thread pump adaptor shipping plug (HDPE, EPDM)
DQPROPUMPAD202	Internal 3/4 NPT Thread pump adaptor shipping plug (HDPE, FKM)
DQPRPUMPAD202	Extended shipping plug for venting internal pressure from drum (HDPE, EPDM)
DQPROSHPLUGEX	Extended shipping plug for venting internal pressure from drum (HDPE, FKM)
DQPROSHPLUGEX202	Extended shipping plug for venting internal pressure from drum (HDPE, FKM)
2007900	Shipping plug for drum insert (Does not include shipping plug o-ring)
2290100	Shipping plug o-ring, EPDM
2307200	Shipping plug o-ring, FKM
DQPURSP	Shipping Plug with EPDM seal
DQPURSP202	Shipping Plug with FKM seal

## Sample Kits (Includes one coupler, one insert and one dip-tube)

PART NUMBER	DESCRIPTION
DQPURDISEALPOE	Drum insert POE bung seal
DQPURDISEALFEP	Drum insert FEP encapsulated silicone bung seal
DQPURCPSEALFKM	Coupler seal kit (2 seals), FKM
DQPURCPSEALSMZ	Coupler seal kit (2 seals), Simriz®
2423400	Coupler o-ring kit, EPDM (Includes 2 o-rings)
2423500	Coupler o-ring kit, FKM (Includes 2 o-rings)
2166000	Drum insert flat gasket, 2" buttress, FDA EPDM
2166100	Drum insert flat gasket, 2" buttress, FKM
2165800	Drum insert o-ring, 2" NPS (ISO G2) EPDM for steel drums
2165900	Drum insert o-ring, 2" NPS (ISO G2) FKM for steel drums
2165800	Drum insert o-ring, BCS 56x4, EPDM (same as ISO G2 for steel)
2165900	Drum insert o-ring, BCS 56x4, FKM (same as ISO G2 for steel)
2525200	Drum insert flat gasket, 2" NPS (ISO G2) EPDM for plastic drums
2525300	Drum insert flat gasket, 2" NPS (ISO G2) FKM for plastic drums
2594900	Replacement Drum Insert Seal, 2" Buttress, FDA
DQPRO70X6AD	70 X 6 Adaptor with EPDM O-Ring
DQPRO70X6AD202	70 X 6 Adaptor with FKM (Viton®) O-Rings

## Accessories

PART NUMBER	DESCRIPTION
<b>TETHER/DUST CAP</b>	
DQPROTETHER	Tether/Dust Cap for use with DrumQuik PRO shipping plugs and couplers (PVC, Vinyl)

### COUPLER VENT PORT OPTIONS

2879800	Vent check valve, 1/2" ID x 1/4" male NPT (316 SST, Santoprene)
2879801	Vent check valve, 1/2" ID x 1/4" male NPT (Hastelloy® C, FKM)
DQPROFIL01	Air filter, coupler vent port, 1/4" male NPT (polypropylene, 70 micron)
APCD24004	Vent coupling insert, 1/4" male NPT (Acetal, 316 SST, Buna-N)
APCD17004SH	Vent coupling body with shroud, 1/4" hose barb (Acetal, 316 SST, Buna-N)
APCD17006SH	Vent coupling body with shroud, 3/8" hose barb (Acetal, 316 SST, Buna-N)
EFCDD24412	Vent coupling insert, 1/4" male NPT (Polypropylene, 316 SST, EPDM)
EFCDD17412	Vent coupling body, 1/4" hose barb (Polypropylene, 316 SST, EPDM)
EFCDD17612	Vent coupling body, 3/8" hose barb (Polypropylene, 316 SST, EPDM)

NOTE: Parts listed above are suggested for use in the vent port, but any 1/4" NPT CPC coupling can be used for blanket gas applications (see page 144)

### BACKFLOW PREVENTION OPTIONS • POLYPROPYLENE

2478900	Check valve for couplers, 1/2" female NPT x 1/2" male NPT (EPDM, 302 SST)
2478901	Check valve for couplers, 1/2" female NPT x 1/2" male NPT (FKM, 302 SST)
2478902	Check valve for couplers, 1/2" female NPT x 1/2" male NPT (EPDM, Hastelloy C)
2478903	Check valve for couplers, 1/2" female NPT x 1/2" male NPT (FKM, Hastelloy C)
2479000	Foot valve for dip-tube, 1/2" hose barb (EPDM, 316 SST)
2479001	Foot valve for dip-tube, 1/2" hose barb (FKM, 316 SST)
2479002	Foot valve for dip-tube, 1/2" hose barb (EPDM, Hastelloy C)
2479003	Foot valve for dip-tube, 1/2" hose barb (FKM, Hastelloy C)

NOTE: CPC distributes the above check valves and foot valves. These valves are not produced by CPC and CPC makes no claims or warranty regarding suitability for use in specific applications.

### COUPLER LIQUID PORT FITTINGS • POLYPROPYLENE

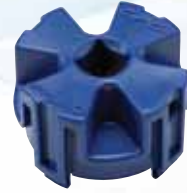
2402600	1/2" female NPT x 3/8" OD compression
2402700	1/2" female NPT x 1/2" OD compression
2402800	1/2" female NPT x 5/8" OD compression
2402900	1/2" female NPT x 3/8" ID hose barb
2403000	1/2" female NPT x 1/2" ID hose barb
2403100	1/2" female NPT x 3/4" ID hose barb

### DQPUR ACCESSORY FITTINGS

DQPUR MC0404	Male Connector, PVDF, 1/4" Flare x 1/4" NPT
DQPUR MC0604	Male Connector, PVDF, 3/8" Flare x 1/4" NPT
DQPUR MC0804	Male Connector, PVDF, 1/2" Flare x 1/4" NPT
DQPUR FR1208	Flare Reducer, PFA, 3/4" Female Flare x 1/2" Male Flare
DQPUR FI1216	Flare Increaser, PFA, 3/4" Female Flare x 1" Male Flare
DQPUR TFMC1208	Female flare x male connector, PFA, 3/4" Female Flare x 1/2" Male NPT
DQPUR SE0808	Sweep Elbow, PFA, 1/2" Female Flare x 1/2" Male Flare
DQPURSE1212	Sweep Elbow, PFA, 3/4" Female Flare x 3/4" Male Flare
DQPURDCPM0812	Double Containment Panel Mount Fitting, PFA, 1/2" process line x 3/4" secondary containment line
DQPURDCPM1216	Double Containment Panel Mount Fitting, PFA, 3/4" process line x 1" secondary containment line
DQPURDCN0812	Double Containment Adapter, PFA, 1/2" process line x 3/4" secondary containment line

Use shipping plug or key installation tool to install keys. Orient ring with lugs down and drum insert key ring with shoulder up.

### Torque Tool



### Bung Wrench

Refer to specifications for torque requirements (page 143)



### Backflow Check and Foot Valves

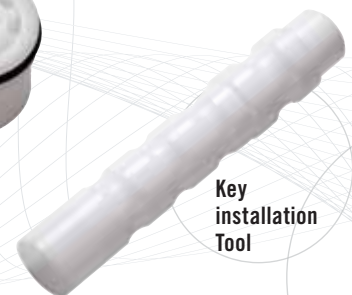
Prevents liquid from draining back into drum when pump is off



### Coupler Liquid Port Fittings



### Shipping Plug



Key  
Installation  
Tool

# DRUMQUIK PRO / DRUMQUIK PUR ACCESSORIES



Universal 3-Port Drum Adaptor Kit  
(shown with HFC12 and NS4)

## DrumQuik® 3-Port UDA Kit • POLYPROPYLENE

The 3-Port UDA features a 3/4" male NPT thread that mates with common containers, bung plugs and caps. The adaptor ports enable simultaneous chemical extraction, venting or application of blanket gas. In addition, the third port can be used to recirculate priming chemical to the container in metering pump applications.

Optional system components including foot valves, air filters and vent check valves are also available. For your convenience, CPC offers a variety of drum adaptor plugs to facilitate easy drum connections. (See plugs and caps on page 149.)

PART NUMBER	DESCRIPTION
DQUA3PKIT	3-port adaptor, EPDM seal, locking nut, 35.5" (905mm) dip-tube, 1/2" x 3/8" & 1/2" x 1/4" reducer bushings and 1/4" & 3/8" NPT plugs
DQUA3PKIT202	3-port adaptor, FKM seal, locking nut, 35.5" (905mm) dip-tube, 1/2" x 3/8" & 1/2" x 1/4" reducer bushings and 1/4" & 3/8" NPT plugs
DQUA3P	3-port adaptor bulk packaged (1/2" female NPT liquid outlet port, 3/8" & 1/4" NPT vent/recirculation ports)
DQUA3PNUT	Locking nut for the 3-port adaptor
2717000	EPDM seal for the 3-port adaptor
2717100	FKM seal for the 3-port adaptor
2621100	Reducer bushing, black polypropylene, 1/2" male NPT x 3/8" female NPT
2621200	Reducer bushing, black polypropylene, 1/2" male NPT x 1/4" female NPT
2621300	Pipe plug, black polypropylene, 1/4" male NPT
2621400	Pipe plug, black polypropylene, 3/8" male NPT

Use with PLC, Non-Spill, EFC and ChemQuik Series couplings.

Note: DrumQuik® UDA 3-Port uses DrumQuik PRO dip-tubes and accessories.



## DrumQuik UDA Kit • POLYPROPYLENE

The DrumQuik® UDA Kit turns ChemQuik® or general purpose (HFC or NSH) couplings into a dip-tube that can easily be threaded into the 3/4" female NPS port of common drum closures. It provides a simple and inexpensive way to dispense chemicals in pumped systems. For your convenience, CPC offers a variety of drum adaptor plugs to facilitate easy drum connections. (See plugs and caps on page 149.)



PART NUMBER	DESCRIPTION
DQUAKIT	Adaptor & DQPRODT1274 47" long dip-tube



Universal Drum Adaptor Kit  
(shown with NSH Series)

Can be used with many standard CPC quick disconnect couplings and standard bung plugs and bottle caps

## BottleQuik® 2-Port Kit UDA • POLYPROPYLENE

The BottleQuik® is intended for use on reagent bottles with SP400-38mm threads. It can be used in either the upright position or inverted and has two 3/8" female NPT ports for liquid and vent ports.

PART NUMBER	DESCRIPTION
DQUDACAP2PKITPP	2-Port adaptor CAP for 38mm SP400 bottles & dip-tubes, 17.75" (451mm) long, FKM o-ring, 3/8" female NPT liquid port, 3/8" female NPT vent port, 3/8" female NPT vent port. Use above kits with CQG, CQH and CQV Series couplings.

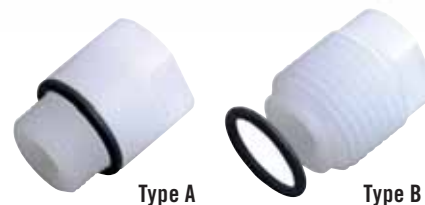


BottleQuik 2-Port UDA Bottle Adaptor Kit (shown with CQG and CQH)

## DrumQuik Asian Drum Adaptors • POLYPROPYLENE

The DrumQuik® Asian drum adaptors allow ChemQuik® or general purpose (HFC or NSH) couplings to be easily connected to the unique threads common in many drum closures (with integral dip-tubes) manufactured in Asia, e.g., Kodama, Accelo, Stella, Dung Woo, etc. A 3/4" female NPT inner thread can accept any coupling or fitting with a 3/4" male NPT termination.

PART NUMBER	DESCRIPTION
DQADAPP0212 • TYPE A	Adaptor, FKM seals, 3/4" female NPT inner port x 3/4" NPS male thread to fit drum plug.
DQADAPP0622 • TYPE B	Adaptor, FKM seals, 3/4" female NPT inner port x 1-3/8" TYPE B male buttress thread to fit drum plug.



**Type A**  
For use with closure plugs with a 3/4" NPS center port.

**Type B**  
For use with closure plugs with a 1-3/8" buttress center port.

## DrumQuik Plugs and Caps

For your convenience, CPC offers several sizes of common bung plugs and caps that have the internal 3/4" female NPS thread, into which the DrumQuik Universal Drum Adaptors/ChemQuik couplings are threaded.

PART NUMBER	DESCRIPTION
DQMBUNGPP2BUT12	Bung closure, polypropylene, EPDM o-ring, 2" buttress x 3/4" female NPS
DQMBUNGPP2NPS12	Bung closure, polypropylene, EPDM o-ring, 2" NPS x 3/4" female NPS
DQMBUNGPP56X412	Bung closure, polypropylene, EPDM o-ring, BCS56x4 x 3/4" female NPS
DQMBUNGPP70X612	Bung closure, polypropylene, EPDM o-ring, BCS70x6, 3/4" female NPS
DQMCAPP70mm	Cap closure, polypropylene, EPDM o-ring, 70mm x 3/4" female NPS
DQMCAPP63MM	Cap closure, polypropylene, EPDM o-ring, 63mm, 3/4" female NPS



3/4" NPT inner port incorporates a face seal to assure a leak-free connection.

All measurements are in inches (millimeters) unless otherwise noted. Tubing must meet stated inside and outside diameters. **NOTE:** The DQ UDA kits are designed to work with CPC couplings that have 3/4" NPT male terminations. The DQ UDA 3-Port kits are designed to work with a 1/2" NPT male on the liquid port and a 1/4" NPT male on the vent port. A 1/2" male NPT to 1/4" female NPT reducer bushing may be required to accommodate smaller NS4, PLC and PMC Series couplings. BottleQuik features two 3/8" female NPT ports. **NOTE:** DrumQuik Adaptors are intended for end-use applications not requiring compliance with UN/DOT standards for use in transportation of hazardous materials.



DQ UDA kits can be used with a wide range of closures.